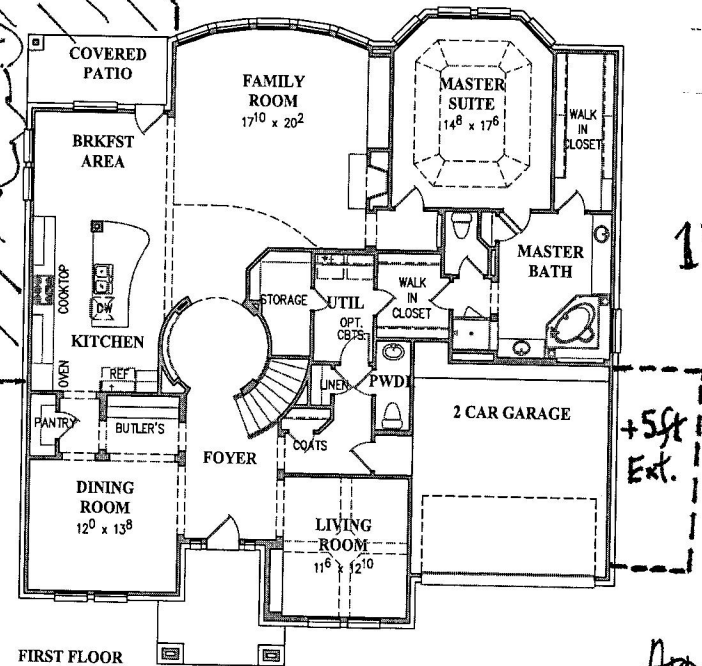




# WESTIN HOMES

## "CAMBRIDGE" Model ESTATE COLLECTION

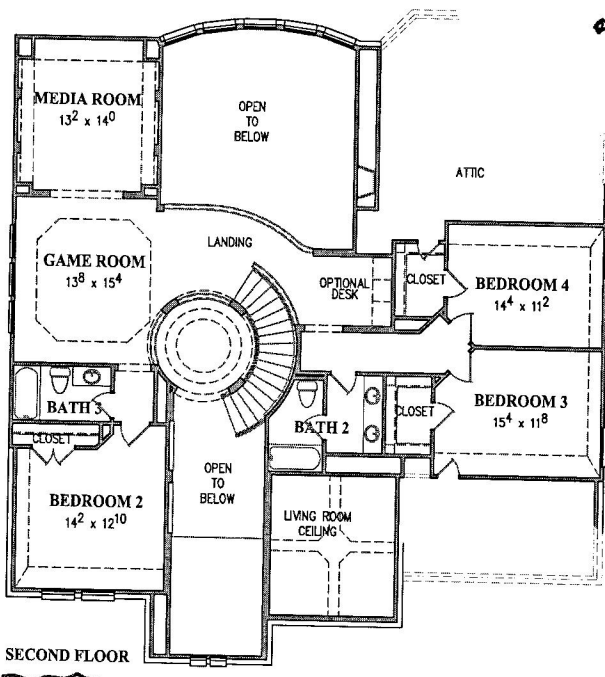
+ ~ 800 SF.  
Concrete  
Reinforced  
PATIO



1<sup>st</sup> Floor Plan.

- Approx: 3905 sqft. per AGAD
- On 11,367 sqft lot 1/4 acre
- CDSac lot

FIRST FLOOR



2nd Floor Plan.

SECOND FLOOR

(This home: 17315 Cordell Falls Ct. - is FLIPPED)

5-6545 2-6-17 Prices, plans, dimensions, features, specifications, materials and availability of homes or communities are subject to change without notice or obligation. Illustrations are artist depictions only and may differ from the final construction. Not all options and/or elevations are available in all communities. Copyright 2013 Westin Homes and Properties, LP. - All Rights Reserved. For more information please visit [www.westin-homes.com](http://www.westin-homes.com).