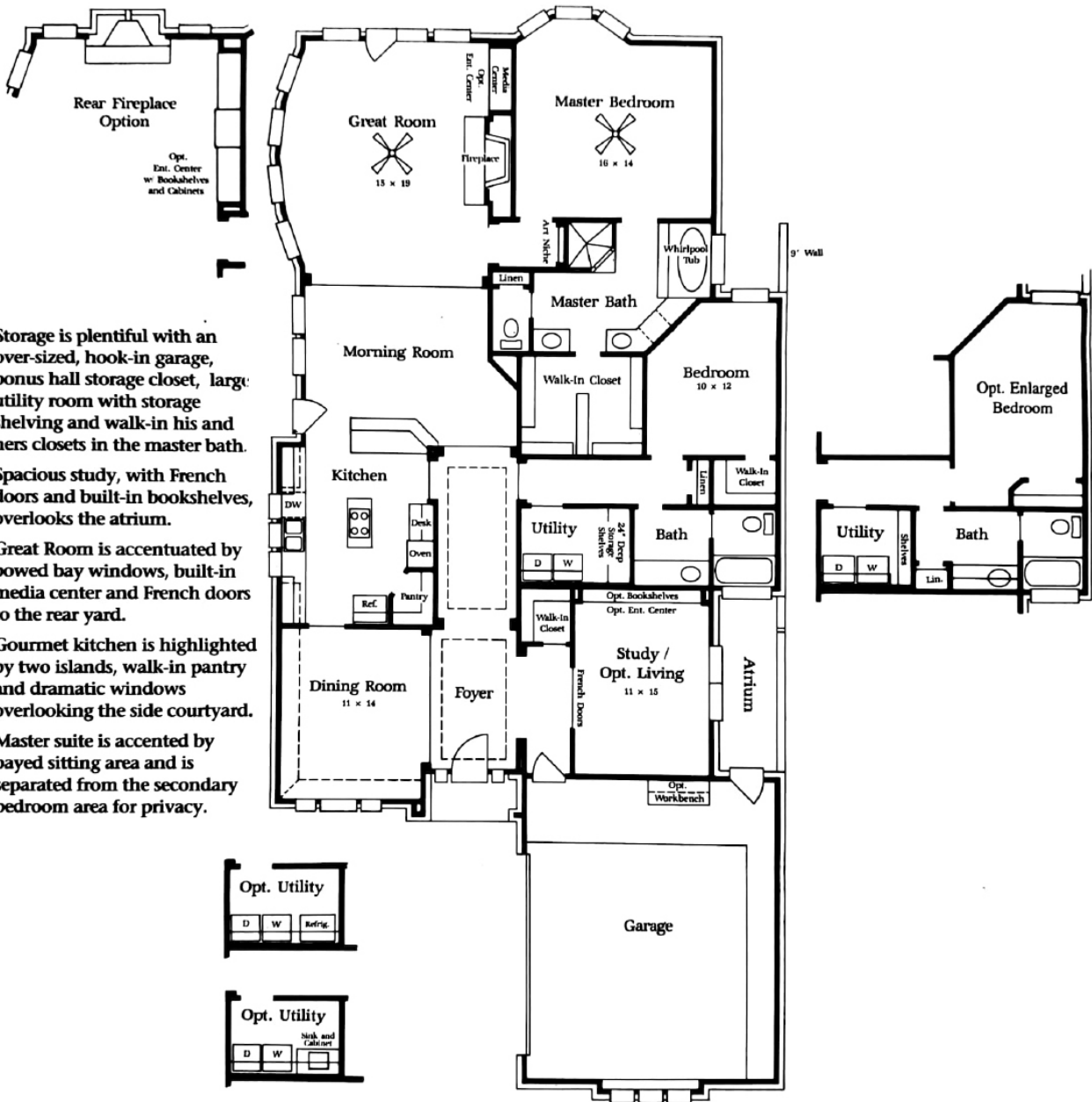
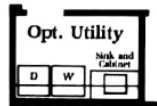
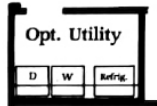


RIVIERA

PLAN 129 • 2332 SQ. FT.



- Storage is plentiful with an over-sized, hook-in garage, bonus hall storage closet, large utility room with storage shelving and walk-in his and hers closets in the master bath.
- Spacious study, with French doors and built-in bookshelves, overlooks the atrium.
- Great Room is accentuated by bowed bay windows, built-in media center and French doors to the rear yard.
- Gourmet kitchen is highlighted by two islands, walk-in pantry and dramatic windows overlooking the side courtyard.
- Master suite is accented by bayed sitting area and is separated from the secondary bedroom area for privacy.



Window placement, roof line and porches may vary by elevation. Square footage and room dimensions are approximate. Variances in square footage may occur in different elevations or when different exterior materials are used. Plans, specifications and special features are subject to change without notice.