

# Gibson Villas

## List Price Sheet



AVANT  
HOMES

Unit	Square Footage (Conditioned)	Square Footage (Gross)	Square Footage (Backyard)	Price
A	3414 sq ft	4063 sq ft	1488 sq ft	\$689,000
B	2982 sq ft	3805 sq ft	480 sq ft	\$619,000
B1	2982 sq ft	3805 sq ft	480 sq ft	\$619,000
C	3068 sq ft	3815 sq ft	445 sq ft	\$619,000

# Gibson Villas

## Floor plans - Unit A



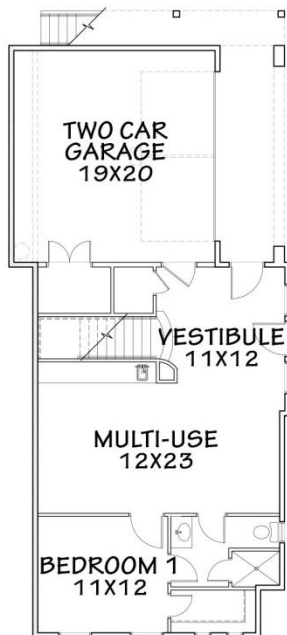
AVANT  
HOMES



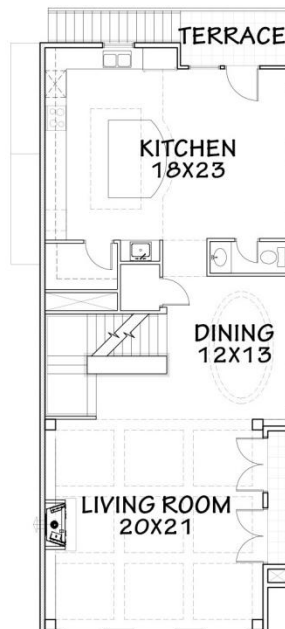
### UNIT A

LEVEL ONE:	839
LEVEL TWO:	1,269
LEVEL THREE:	1,306
TOTAL LIVING:	3,414

OVERALL WIDTH:	26'-0"
OVERALL DEPTH:	56'-0"



FIRST FLOOR



SECOND FLOOR



THIRD FLOOR

# Gibson Villas

## Floor plans - Unit B

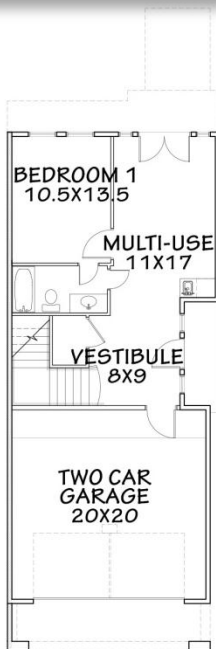


AVANT  
HOMES

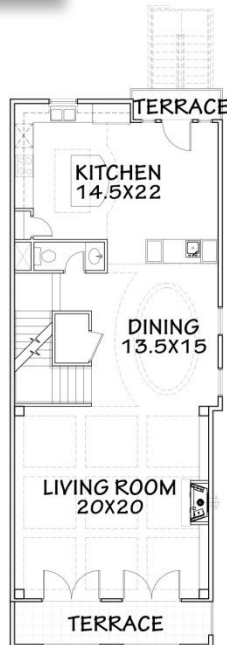


### UNIT B

LEVEL ONE:	620
LEVEL TWO:	1,158
LEVEL THREE:	1,204
TOTAL LIVING:	2,982
OVERALL WIDTH:	22'-6"
OVERALL DEPTH:	55'-0"



FIRST FLOOR



SECOND FLOOR



THIRD FLOOR

# Gibson Villas

## Floor plans - Unit B1



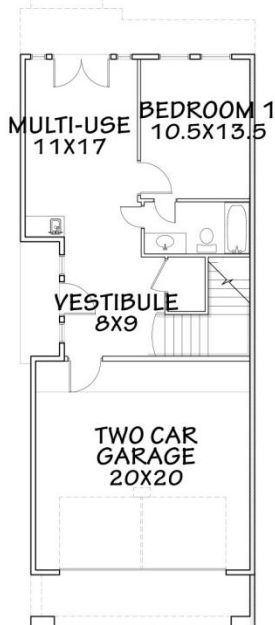
AVANT  
HOMES



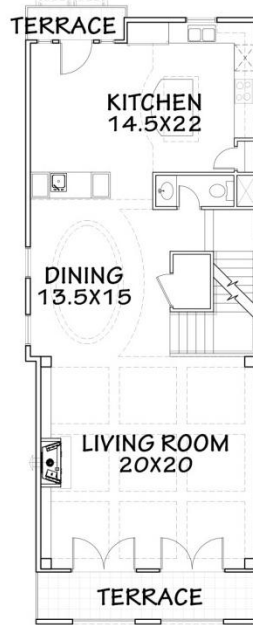
### UNIT B-1

LEVEL ONE:	620
LEVEL TWO:	1,158
LEVEL THREE:	1,204
TOTAL LIVING:	2,982

OVERALL WIDTH:	22'-6"
OVERALL DEPTH:	55'-0"



FIRST FLOOR



SECOND FLOOR



THIRD FLOOR

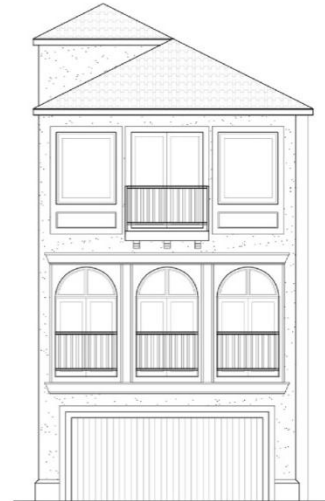


# Gibson Villas

## Floor plans - Unit C

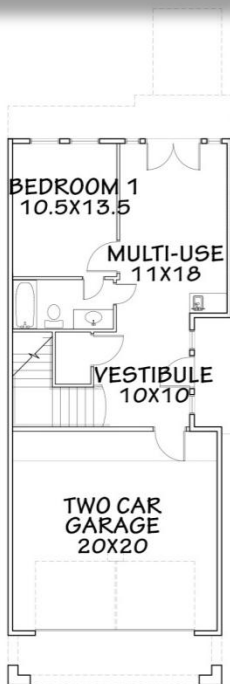


AVANT  
HOMES

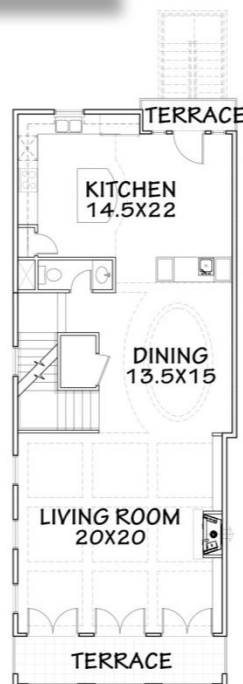


### UNIT C

LEVEL ONE:	620
LEVEL TWO:	1,158
LEVEL THREE:	1,290
TOTLA LIVING:	3,068
OVERALL WIDTH:	22'-6"
OVERALL DEPTH:	55'-0"



FIRST FLOOR



SECOND FLOOR



THIRD FLOOR