



704 MILTON STREET

Angleton, Texas 77515

PROFILE

Built in 1977
1,728 Square Feet

Northridge Subdivision

Four Bedrooms
Two Full Bathrooms
Two Car Garage

Angleton I.S.D

FACTS AND FEATURES

Split floor plan with master bedroom separate from other bedrooms

Large central family room with vaulted ceiling

Ceiling fans throughout house

Central A/C
Gas Heat
Gas Water Heater
Electrical Dryer Connection

Washer/Dryer connections in the garage.

Electrical hookup for RV (120V/30A) in the garage and at driveway

Secondary electrical panel in the garage

Large flower garden in back yard with ivy covered fence and swing

HOME SYSTEMS

Fence

7' Cedar Privacy
Installed in 2012 by Superior Fence Services of Angleton

Electrical Service

120/240V, 1PH, 200A
Rebuilt in 2012 by Sain Electric of Angleton

Roof

30 Year Composition
Installed in 2015 by Ameripro Contractors of Angleton

Garage Door Opener

Craftsman
Installed in 2014 by Affordable Overhead Door of Angleton

APPLIANCES

Range/Oven

Whirlpool
Stainless, Electric Oven, Glass Cooktop
Purchased in 2014

Refrigerator

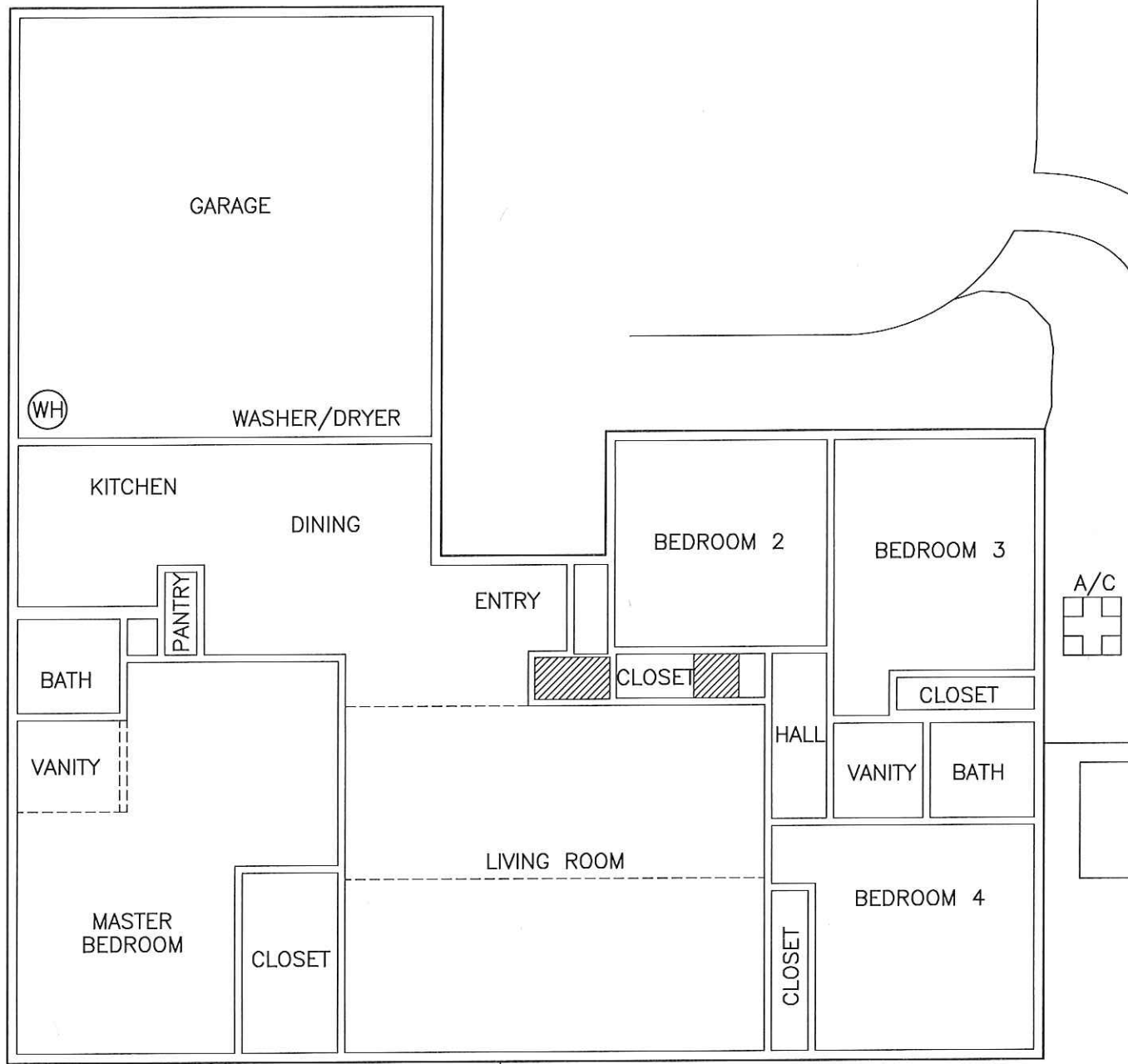
Whirlpool
Stainless, French Door Style with Water/Ice in Door
Purchased in 2012

Dish Washer

Whirlpool
Stainless, In-cabinet
Purchased in 2016

Microwave

Whirlpool
Stainless, with Vented Range Hood
Purchased in 2015



SAVED: 6/17/2019 8:32:13 PM PLOTTED: 6/17/2019 8:33:08 PM

REV	DATE	DESCRIPTION	BY
0	08/12	ORIGINAL DRAWING	RGB



704 Milton Street

PLAN DRAWING
FLOOR PLAN

SCALE: 1/8" = 1' DWG. NO. 704.P0200