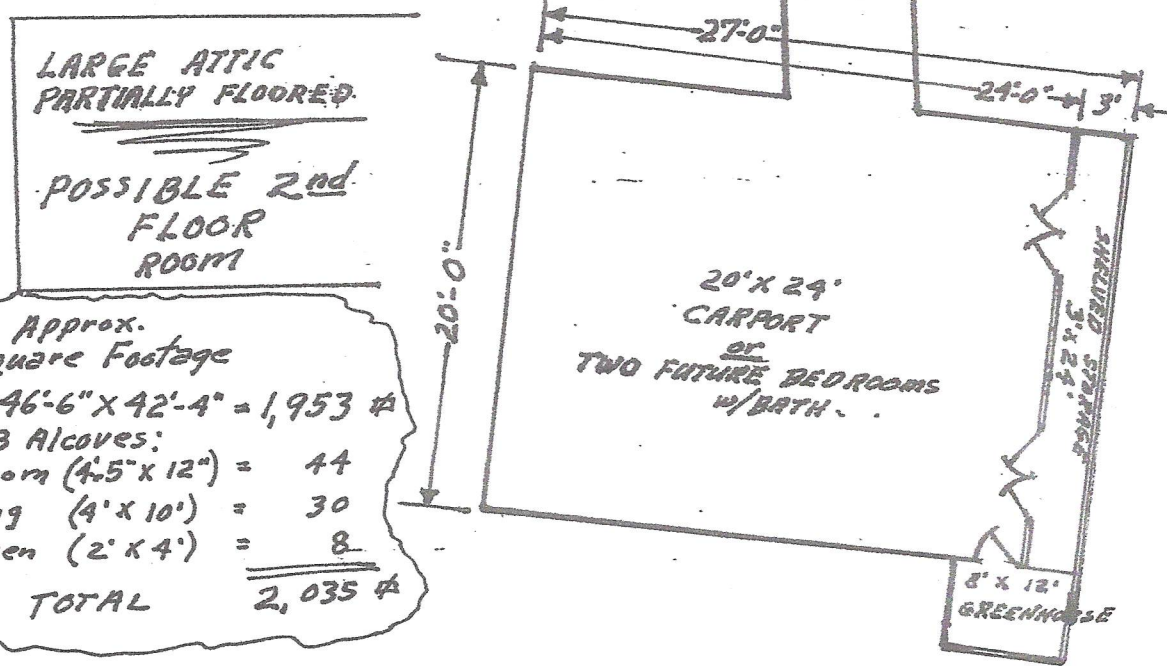
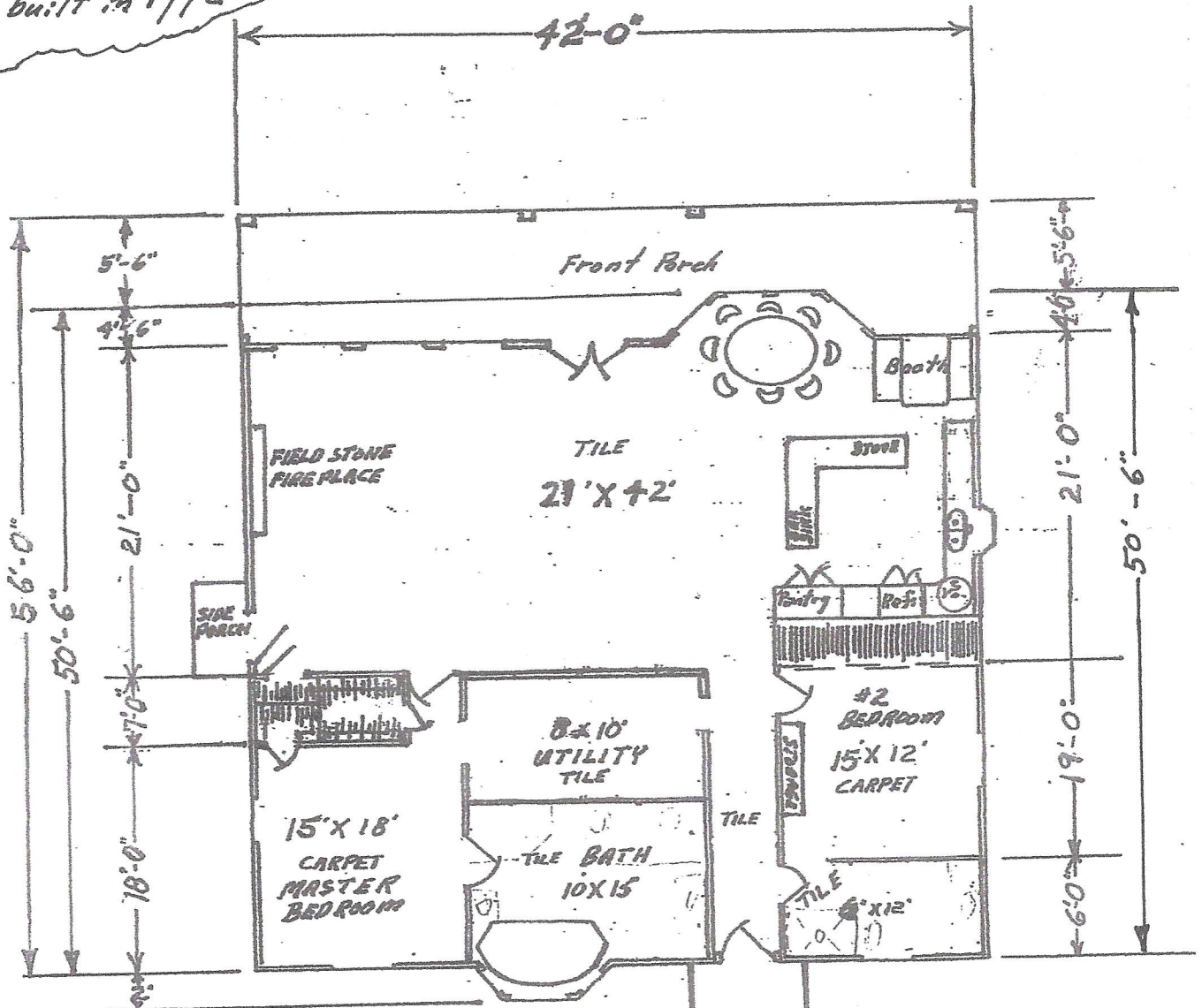


Approx. Measurements
of
House built in 1992



Approx. Square Footage

House 46'-6" X 42'-4" = 1,953 #

Plus 3 Alcoves:

1-Bedroom (4'-5" X 12") = 44

2-Dining (4' X 10') = 30

3-Kitchen (2' X 4') = 8

TOTAL 2,035 #

