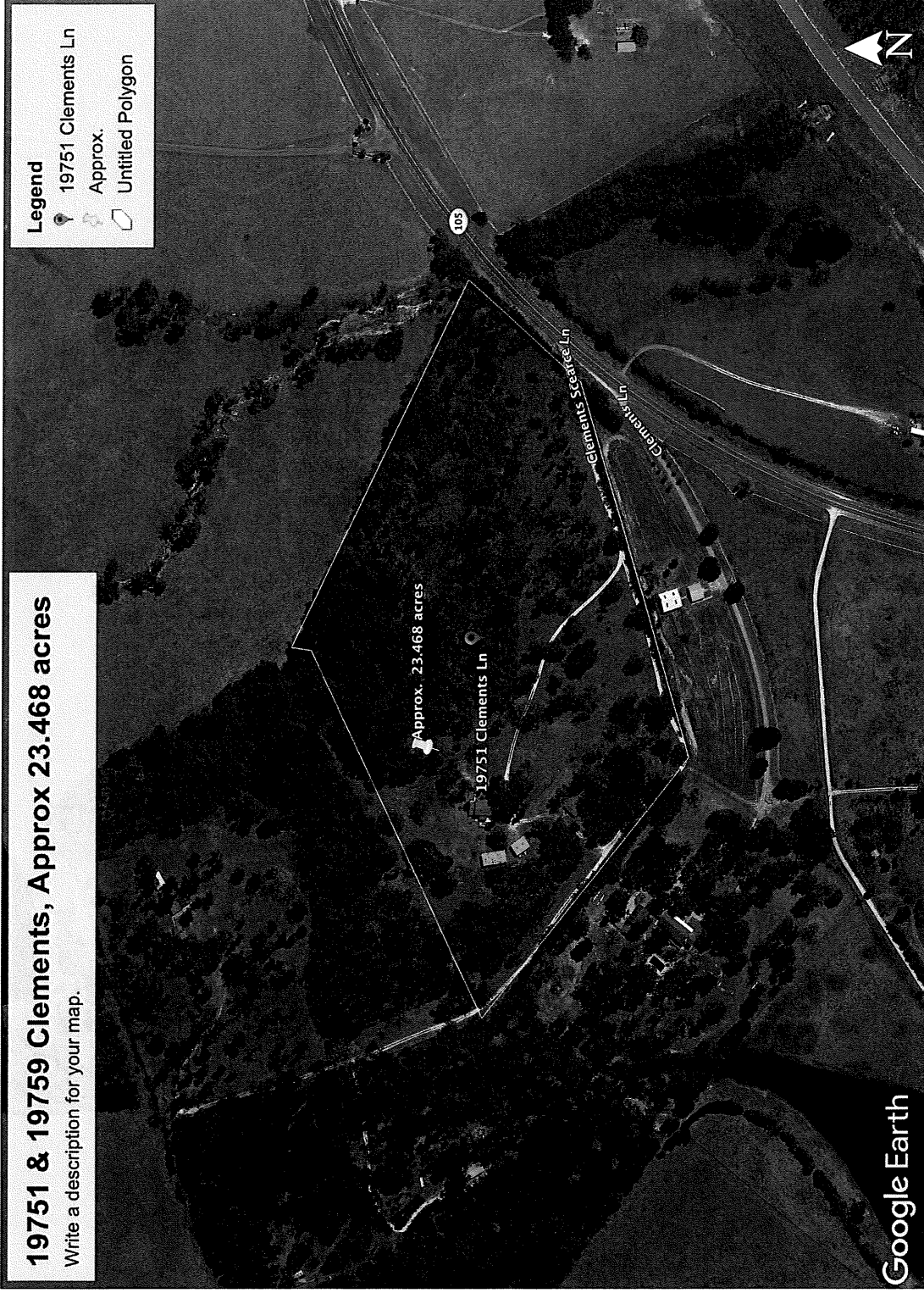


19751 & 19759 Clements, Approx 23.468 acres

Write a description for your map.

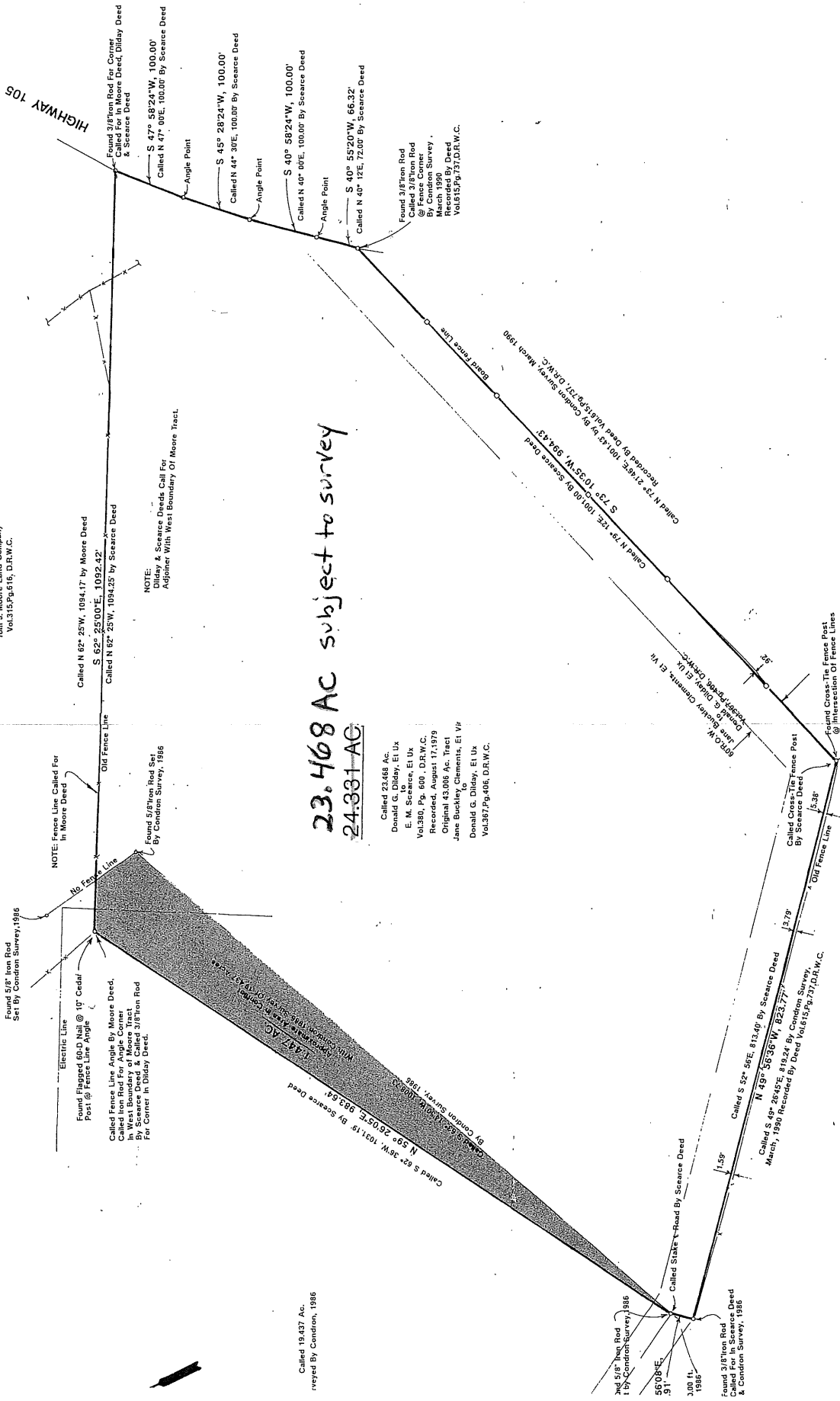


19751 & 19759 CLEMENTS LANE, Washington County

23.5 acres with 2 homes

20 minutes to Brenham, 5 minutes to Navasota, 25 minutes to College Station

CALLED 80.26 ACRE TRACT
Tom J. Moore Land Company
Vol.315,Pg.616, D.R.W.C.



Called N 62° 25' W, 1084.17 by Moore Deed
S 62° 25' 00\" E, 1092.42'
Called N 62° 25' W, 1084.25 by Scarsee Deed

NOTE:
Dilsey & Scarsee Deeds, Call For
Adjoiner With West Boundary Of Moore Tract.

23.468 Ac subject to survey
24.331 AC

Called 23.468 Ac.
Donald G. Dilsey, Et Ux
E. M. Scarsee, Et Ux
Vol.380, Pg. 600, D.R.W.C.
Recorded, August 17, 1979
Original 45.005 Ac. Tract
Jane Buckley, Clements, Et VP
Donald G. Dilsey, Et Ux
Vol.387,Pg.406, D.R.W.C.

NOTE:
CALLS FOR COMMON BOUNDARIES OF ORIGINAL
TRACTS OF 100 ACRES AND 23.468 ACRE SCARSEE TRACT
ARE THE SAME IN THE RESPECTIVE DEEDS.

Tract 1
Called 14.9669 Ac.
Vol.615,Pg.737, D.R.W.C.

Scale: 1" = 100'
Project Number: 92.000.09

SCARSEE TRACT