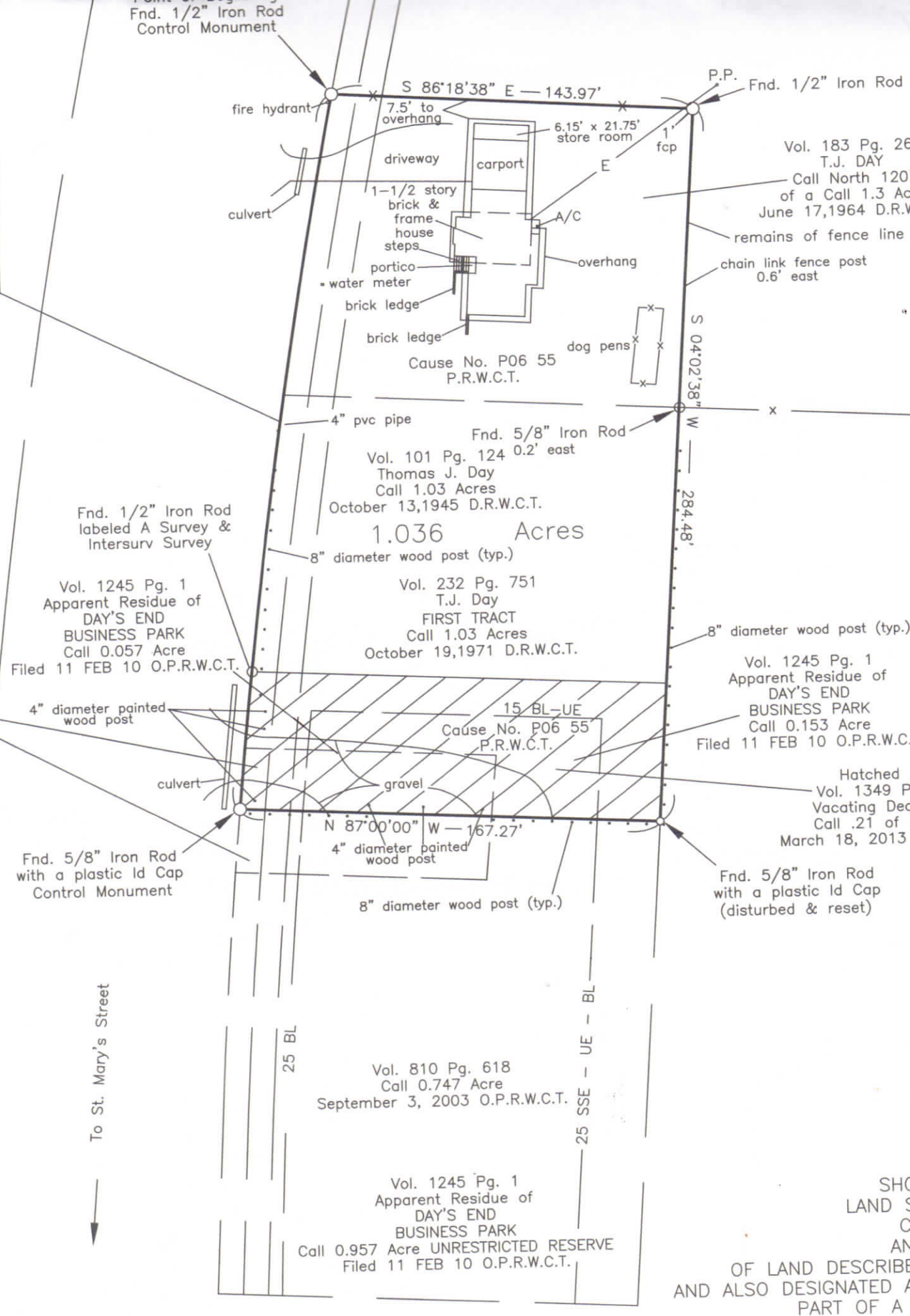


CURVE DATA:
 ta = 05°51'19"
 = 287.71'
 = 2815.33'
 (Bearing Basis)
 rg. = N08°41'09"E
 Dist. = 287.58'

536
 .R.W.C.T.
 751
 ACT
 00'
 D.R.W.C.T.



Vol. 183 Pg. 26
 T.J. DAY
 Call North 120
 of a Call 1.3 Ac
 June 17, 1964 D.R.V.
 remains of fence line
 chain link fence post
 0.6' east

4" pvc pipe
 Fnd. 5/8" Iron Rod
 0.2' east
 Vol. 101 Pg. 124
 Thomas J. Day
 Call 1.03 Acres
 October 13, 1945 D.R.W.C.T.
1.036 Acres
 8" diameter wood post (typ.)
 Vol. 232 Pg. 751
 T.J. Day
 FIRST TRACT
 Call 1.03 Acres
 October 19, 1971 D.R.W.C.T.

Fnd. 1/2" Iron Rod
 labeled A Survey &
 Intersurv Survey
 Vol. 1245 Pg. 1
 Apparent Residue of
 DAY'S END
 BUSINESS PARK
 Call 0.057 Acre
 Filed 11 FEB 10 O.P.R.W.C.T.

8" diameter wood post (typ.)
 Vol. 1245 Pg. 1
 Apparent Residue of
 DAY'S END
 BUSINESS PARK
 Call 0.153 Acre
 Filed 11 FEB 10 O.P.R.W.C.
 Hatched
 Vol. 1349 P
 Vacating Dec
 Call .21 of
 March 18, 2013

Fnd. 5/8" Iron Rod
 with a plastic Id Cap
 Control Monument

Fnd. 5/8" Iron Rod
 with a plastic Id Cap
 (disturbed & reset)

Vol. 810 Pg. 618
 Call 0.747 Acre
 September 3, 2003 O.P.R.W.C.T.

Vol. 1245 Pg. 1
 Apparent Residue of
 DAY'S END
 BUSINESS PARK
 Call 0.957 Acre UNRESTRICTED RESERVE
 Filed 11 FEB 10 O.P.R.W.C.T.

SHO
 LAND S
 C
 AN
 OF LAND DESCRIBE
 AND ALSO DESIGNATED A
 PART OF A
 RECORDED IN VO
 FIRST TRACT IN VO
 OF A CALL .21 ACRE PORTION

To St. Mary's Street