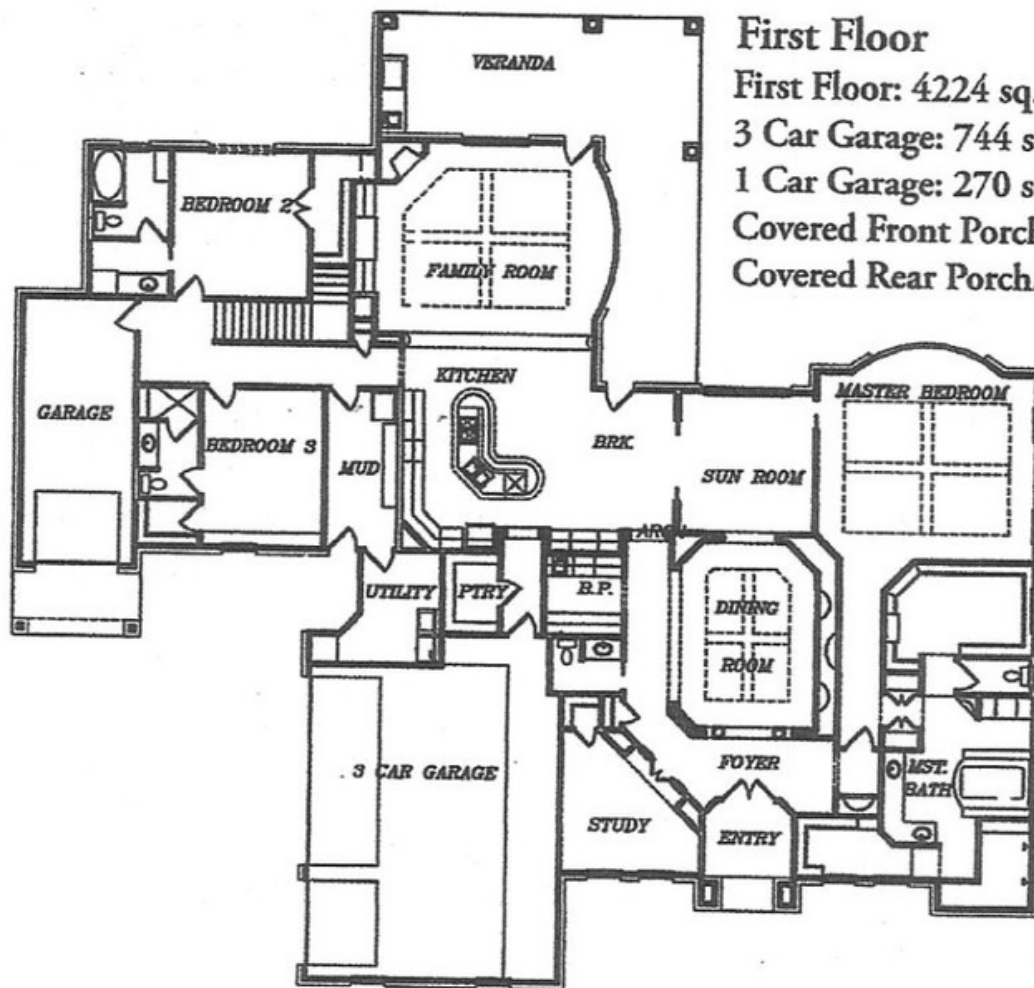


2419 Sandy Point Dr Richmond, TX 77406



First Floor

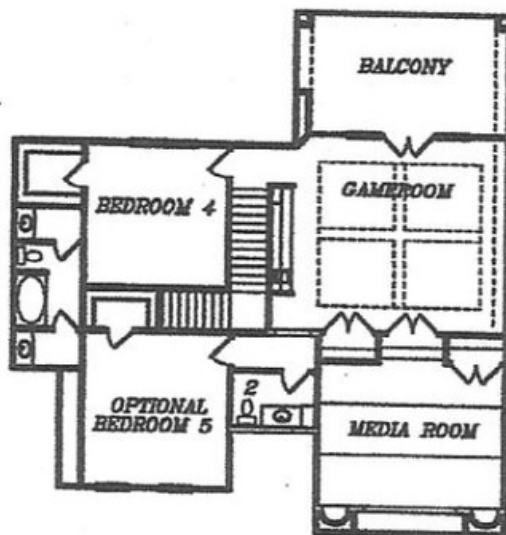
First Floor: 4224 sq.ft.

3 Car Garage: 744 sq.ft.

1 Car Garage: 270 sq.ft.

Covered Front Porch: 90 sq.ft.

Covered Rear Porch/Veranda: 570 sq.ft.



Second Floor

Second Floor: 1564 sq.ft.

Upstairs Balcony: 254 sq.ft.