

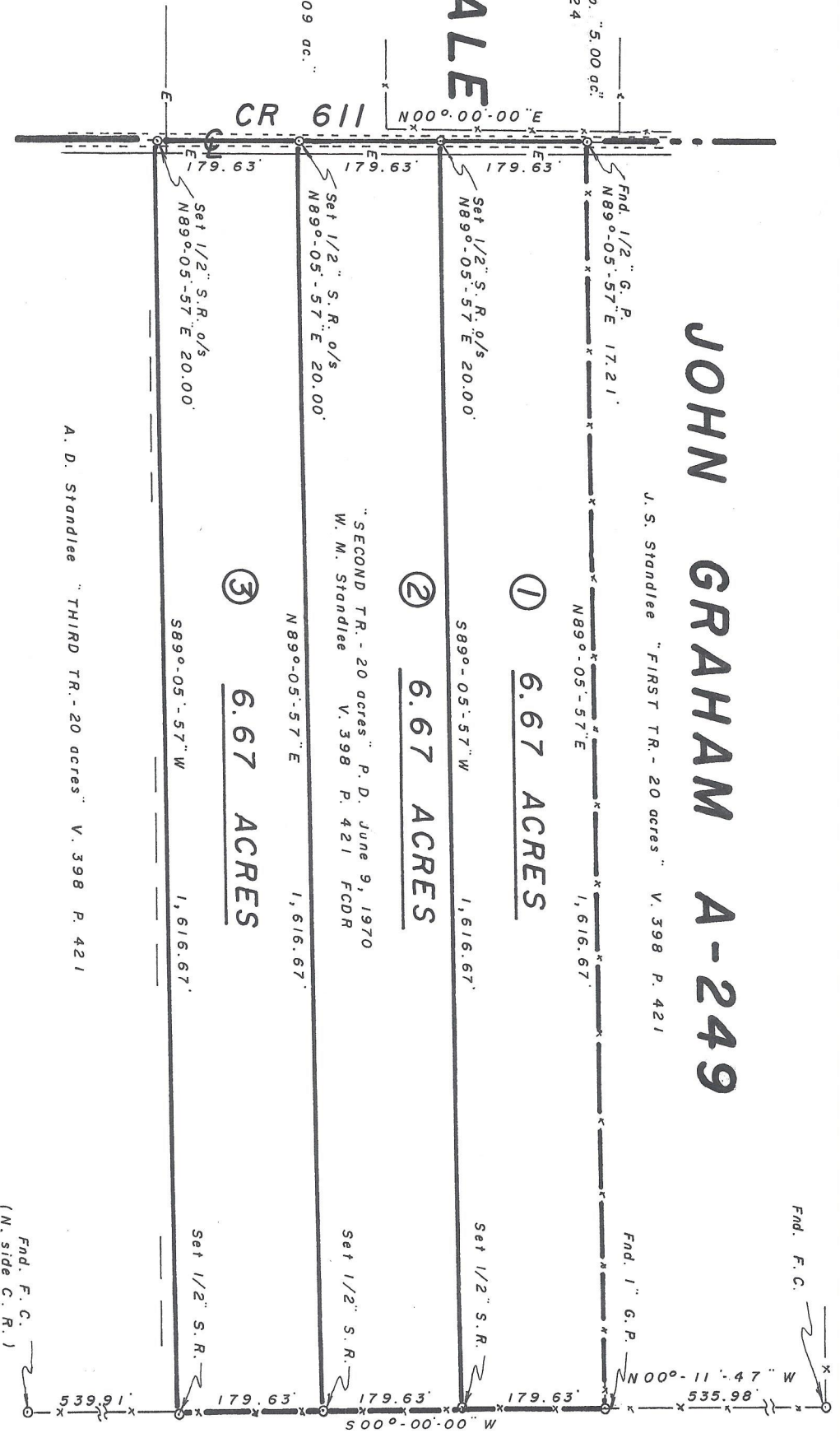
JOHN GRAHAM A-249

Based on E. line
"SECOND TR." -
20 acres

North Central Oil Corp. "5.00 ac."
V. 371 P. 524

S. J.
LAUDERDALE
A-374

Ind. M. Michaud "3.09 ac."
V. 1035 P. 771

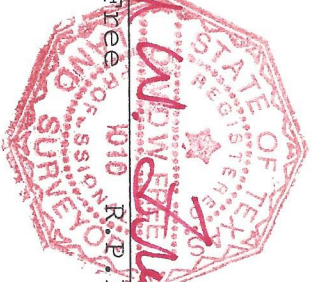


A. D. Standlee "THIRD TR. - 20 acres" V. 398 P. 421

"SECOND TR. - 20 acres" P. D. June 9, 1970
W. M. Standlee V. 398 P. 421 FCDR

Herbert Day
"488.17 acres"
V. 196 P. 196

David W. Free R.P. I.S.S. No. 4010



SURVEY PLAT OF 20.00 ACRES IN THE
JOHN GRAHAM SURVEY, A-249
PRESTON COUNTY, TEXAS

SCALE: 1" = 200'
JUNE 29, 2000

FREE & ASSOCIATES, P. C.
CENTERVILLE, TEXAS 75333

P. O. BOX 317
(903) 536-2554