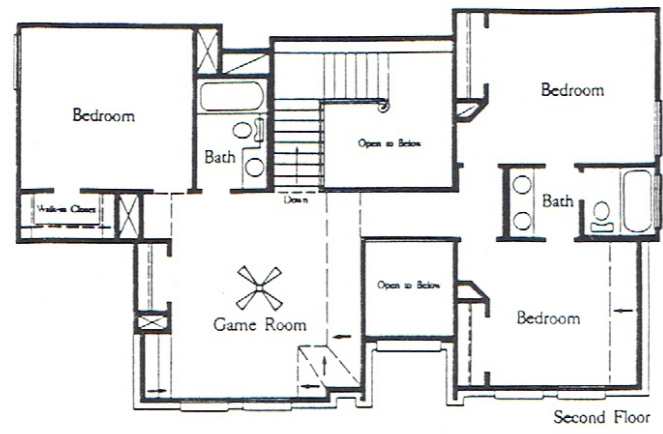
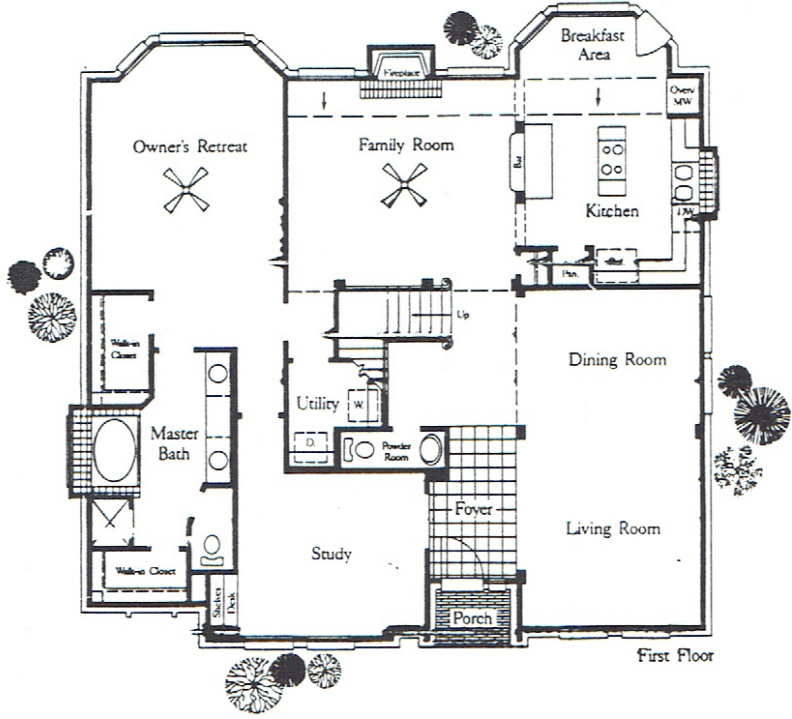


The Barton



Standing on the Barton's elegant suspended balcony provides you fabulous views of the foyer on one side, and the Family Room and a decorative plant shelf on the other. Other architectural features include:

- A spacious Study off one side of the foyer with a built-in desk and bookshelves
- An open Family Room/Kitchen/Breakfast Area separated by a casual serving bar for additional dining space
- A gourmet island kitchen with a sunny bow-bay Breakfast Area, a French door leading to the detached garage, and plenty of custom-finished cabinets and counters
- Large Owner's Retreat with bow-bay sitting area, two-walk-in closets, and airy Master Bath with whirlpool tub set in a tile shelf, separate glass-enclosed shower, and marble double vanity with seated make-up area
- Upstairs Game Room with built-ins, three bedrooms and two-baths complete this beautiful home



Front windows may vary per elevation.

Floor plans subject to change without notice.

© Weekley Homes, Inc. 1992

Imagination

David Weekley Homes