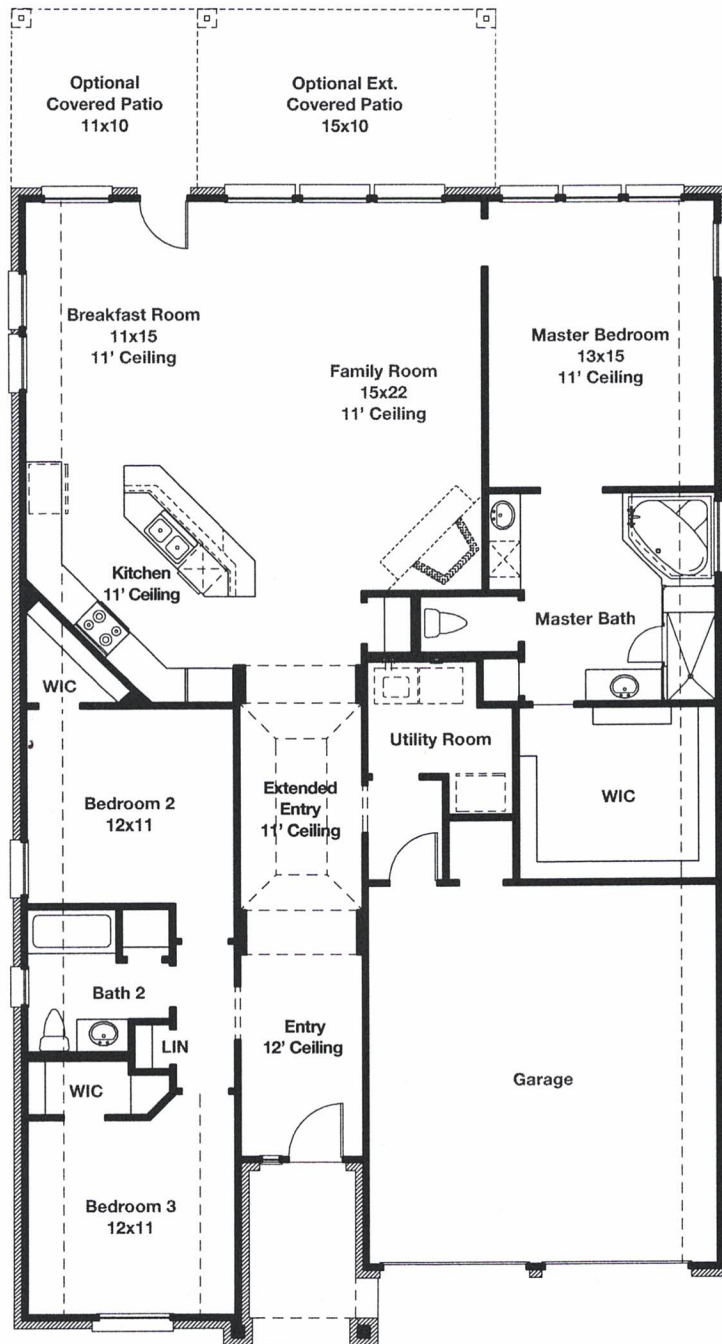


# Floor Plan

1990 PLAN



Revised 7/1/14

281-693-7209 | [ravennahomes.com](http://ravennahomes.com)

Floor plan names represent approximate floor plan square footages and do not constitute a representation of the actual square footage of the home. Plan options shown do not necessarily reflect all associated changes. Contact a sales representative for details. Ravenna Homes does not discriminate in housing on the basis of race, color, national origin, religion, sex, familial status, handicap, or disability.

# Features

## FIRETHORNE 50'

### Kitchen

- Designer 42" J-Kraft cabinets with raised panel doors, crown molding, full extension drawer guides, dove-tail drawer construction, and a custom valance over the range/cooktop including decorative corbels.
- Two standard banks of drawers (per plan).
- Granite countertops with tile backsplash.
- Undermount stainless steel sink with garbage disposal for easy clean up.
- Moen pull-down faucet with satin nickel finish.
- Oversized 16" or larger tile flooring in kitchen and breakfast room.
- GE stainless steel gas cooktop with separate built-in 30" oven and microwave.
- GE Energy Star labeled stainless steel dishwasher.
- Enclosed refrigerator space.
- Abundant recessed can lights.

### Interior

- Granite countertops with undermount sinks in all secondary baths.
- Satin nickel finished Moen faucet and fixtures in powder room (per plan).
- Satin nickel finished Moen faucets and fixtures in all secondary baths.
- Exhaust fans, elongated commodes and mirrors in all baths.
- Built in medicine cabinets in all secondary baths.
- Powder room with cabinet and granite countertop (per plan).
- Oversized 16" or larger tile flooring in entry, extended entry, kitchen, utility room, master bath and all secondary baths.
- Choice of raised two-panel smooth or beadboard doors.
- Designer satin nickel lighting and hardware package.
- Rounded sheetrock corners throughout (except at windows).
- Oversized utility room with cabinet, rod and shelf.
- Exhaust fan and A/C in utility room.
- Block and wire for ceiling fans in secondary bedrooms and gameroom (per plan).
- Pre-wire for surround sound in media room (per plan).
- CAT 5 and RG6 wiring.
- Phone and cable in all secondary bedrooms.
- Alarm system with keypad, siren and prewire for motion detector.

### Master Bath

- Granite countertops with undermount sinks.
- Oversized 16" or larger tile flooring.
- Large garden tub with elegant tile surround and Moen faucet with satin nickel finish.
- Large separate shower with tile surround and floor.
- His and Hers vanities (per plan).
- Mirrors with elegant framing.
- Built in medicine cabinet.
- A/C vent in master walk-in closet (per plan).
- Fluorescent lighting in master closet.

### Exterior

- 8 foot stained mahogany front door with leaded glass inserts and satin nickel hardware.
- 100% brick on the first floor.
- Optional stone elevations (per plan).
- Brick front porch.
- Cast stone address plaque.
- Masonry siding, soffit and fascia with 25-year limited transferable manufacturer's warranty (per plan).
- Insulated garage doors with openers.
- Seamless aluminum gutters (in designated areas).
- Lifetime limited warranty architectural shingles – nailed not stapled.
- Fully sodded front and back yards with front yard landscaping.
- Sherwin Williams satin-finish with two-tone paint on 2-story homes.
- Cedar fence and gate.

### Energy Saving and Green Building Features

- Third party raters inspect and certify each home to meet the RESNET Energy Smart Builder Program including the HERS score rating.
- 16.0 SEER high efficiency Carrier air conditioning system.
- Fresh air intake ventilator system improves air quality.
- Programmable thermostat.
- Smoke and carbon monoxide detectors in designated areas.
- TechShield radiant barrier sheathing keeps attic temperatures lower.
- Ridge vents, soffit vents and air hawks help keep attic cooler.
- Energy efficient, low-E double pane glass windows with vinyl frames.
- R-13 batt insulation in exterior walls, R-22 in sloped ceilings, and R-30 blown insulation in flat ceilings.
- R-3 Dow sheathing.
- Polyshealant around windows, doors, wire holes, base plates and top plates to reduce air leakage.
- Zurn PEX plumbing system for greater energy efficiency, reduced maintenance and greater reliability.
- Energy saving Rheem gas water heater.
- Water saving commodes use 1.6 gallons or less per flush.
- Energy Star rated efficient GE dishwasher.
- Compact fluorescent light bulbs (CFL) throughout.
- Energy Star rated reversible ceiling fans in the master bedroom, family room and game room (per plan).

### Quality Assurance

- Two year limited warranty on workmanship, ten year limited structural warranty.
- Foundations and framing professionally engineered and inspected by an independent third party.
- Post-tension foundations inspected three separate times by an independent third party.
- Homes designed and inspected to meet the International Residential Code for wind speed.
- Third party certified inspectors verify and ensure quality standards are met.

### Design Center

- Four hours of complimentary design service to complete your selections.



Revised 7/19/14

281-693-7209 | [ravennahomes.com](http://ravennahomes.com)