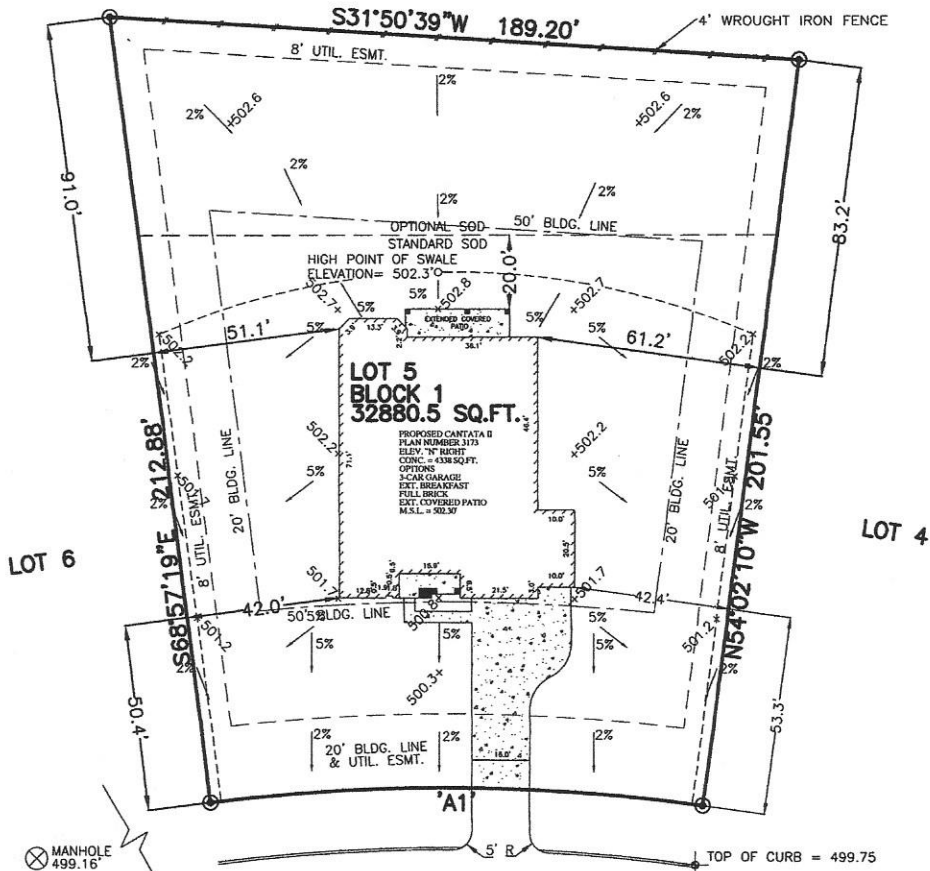


ARC TABLE

ARC	LEN.	RAD.	CHRD. BRG.
'A1'	135.45'	521.90'	S28°24'52"W



DETENTION POND



2715 SILVERSTONE WAY (PVT.)

(60' R.O.W.)

28' CONCRETE PAVEMENT

APPROX. LOT COVERAGE: 13.2%

FRONT SOD:	1623 SQ. YD.
STD. BACK SOD:	525 SQ. YD.
OPT. BACK SOD	1064 SQ. YD.
APPROX. SQ. FT. OF FLATWORK:	
4" PAVING:	1153 SQ. FT.
INTURN	262 SQ. FT.
A/C PAD:	16 SQ. FT.
FENCE:	LINEAR FT.
BACK:	189 FT.
LEFT	0 FT.
RIGHT	0 FT.
FRONT LT.	0 FT.
FRONT RT.	0 FT.

NOTES:

1. ALL BEARINGS SHOWN HEREON ARE BASED ON THE RECORDED PLAT.
2. THIS PLOT PLAN WAS PREPARED WITHOUT BENEFIT OF A TITLE REPORT. THERE MAY BE EASEMENTS, BUILDING LINES & OTHER MATTERS OF RECORD NOT SHOWN HEREON. SURVEYOR OR ALLPOINTS SERVICES CORP. IS NOT LIABLE FOR ANY DAMAGES THAT MAY INCUR IN ANY EVENT THE BUILDER BUILDS ANY IMPROVEMENTS CLOSER THAN 5.0' OR WITHIN AN EASEMENT.

PLOT PLAN

SCALE: 1 = 40'

©2014, ALLPOINTS SERVICES CORP., ALL RIGHTS RESERVED

FOR: RYLAND HOMES
ADDRESS:
2715 SILVERSTONE WAY
ALLPOINTS JOB #: RH71756 JG
G.F.:



ALLPOINTS
SERVICES CORP
PHONE: 713-468-7707
FAX: 713-827-1861

LOT 5, BLOCK 1,
SILVERSTONE, SECTION 1,
CAB. "Q", SH. 94-97, MAP RECORDS,
MONTGOMERY COUNTY, TEXAS

RYLAND
HOMES®

ISSUE DATE: 1/29/2014