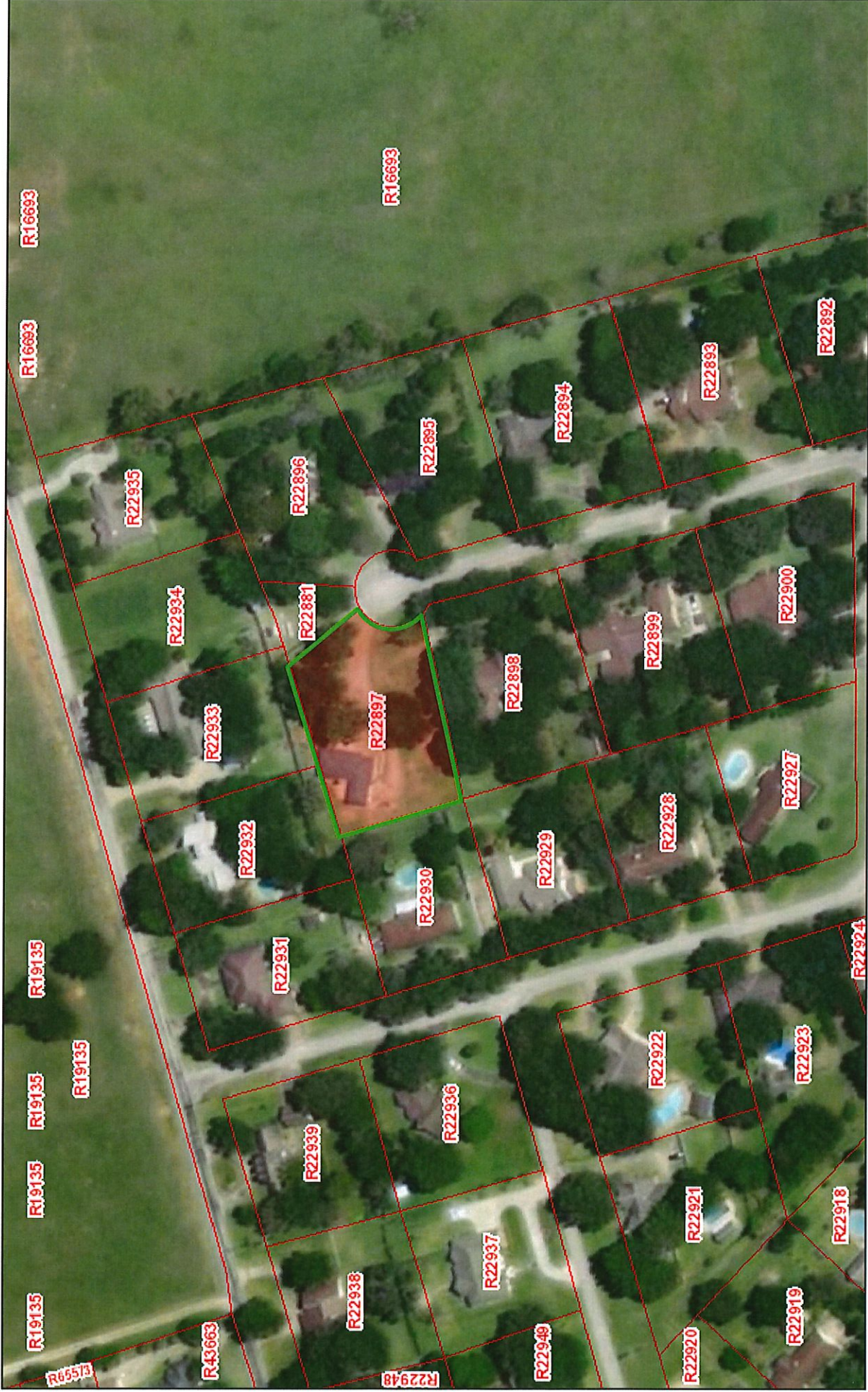


2402 Cheri



August 15, 2019

□ Parcels

1:1,953

0 0.01 0.03 0.06 mi

0 0.03 0.05 0.1 km

Source: Esri, DigitalGlobe, GeoEye, Earthstar Geographics, CNES/Airbus DS, USDA, USGS, AeroGRID, IGN, and the GIS User Community

Washington County Appraisal District & BIS Consulting - www.bisconsultants.com
This product and relative contents are the property of the respective governmental entity and BIS Consultants. Use is restricted for official purposes.

**BOUNDARY AND IMPROVEMENT
SURVEY PLAT**

LOT 16
OF
LOT 16
GUN & ROD ESTATES, SECTION 1
PLAT CABINET NOS. 100A - 101B, P.R.
WASHINGTON COUNTY, TEXAS

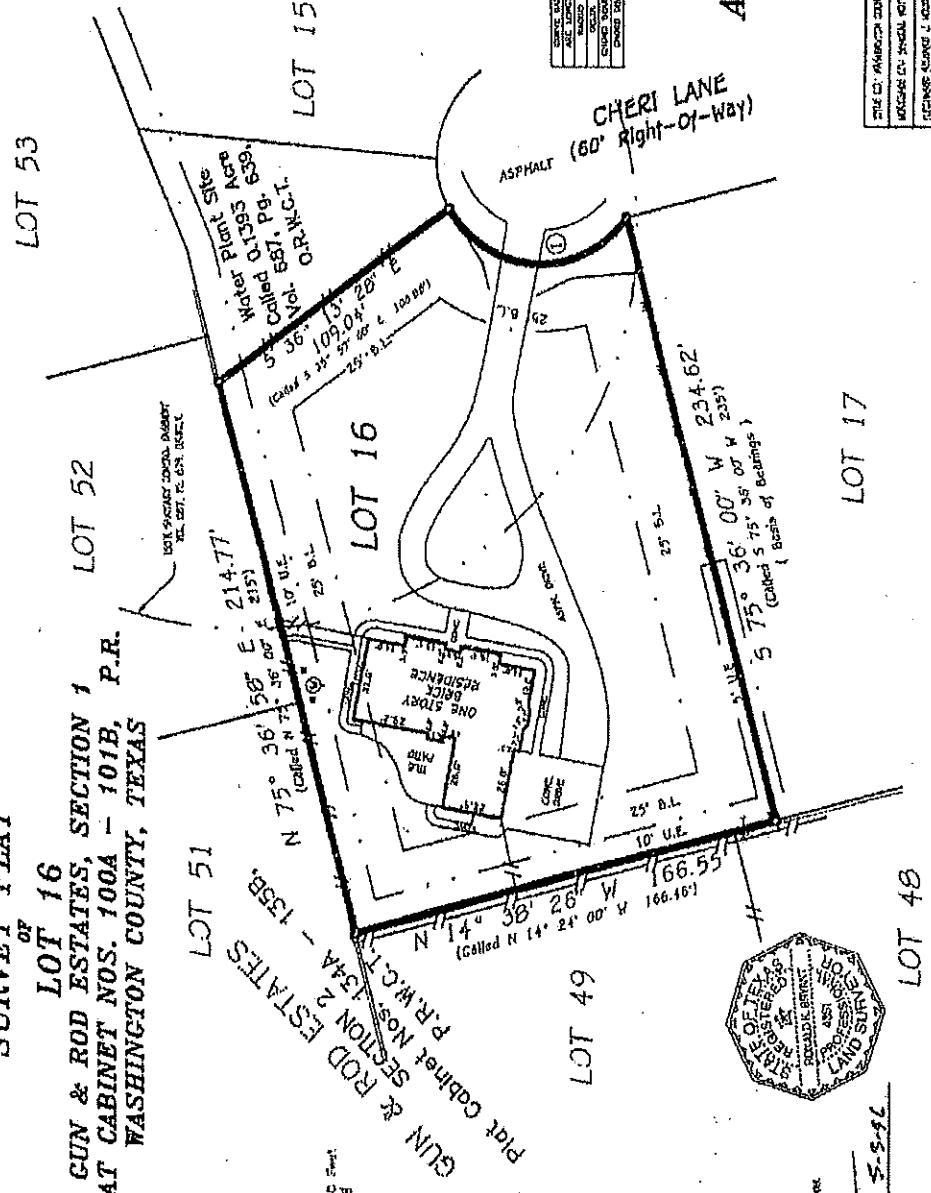
- LEGEND**
- 3/8" BOX END POINT
 - EASEMENT LINE
 - BOUNDARY LINE
 - * TELEPHONE TOWER
 - OVERHEAD POWER LINES
 - POWER POLE
 - GUY WIRE
 - WIND BOLL BRACE
 - ROCKS OR BRACE
 - ⊙ WATER METERS

① CURVE TABLE

CHORD BEARS	CHORD BEARS	CHORD BEARS	CHORD BEARS
113' 00" 17'	113' 00" 17'	113' 00" 17'	113' 00" 17'
113' 00" 17'	113' 00" 17'	113' 00" 17'	113' 00" 17'
113' 00" 17'	113' 00" 17'	113' 00" 17'	113' 00" 17'
113' 00" 17'	113' 00" 17'	113' 00" 17'	113' 00" 17'

PREPARED BY
A-SURVEY
INCORPORATED
1910 WEST 11TH
DALLAS, TEXAS 75248
REGISTERED PROFESSIONAL LAND SURVEYOR
LICENSE NO. 20014-4-18-1987
PROJECT NO. 100-2-1A

STATE OF WASHINGTON COUNTY, TEXAS
REGISTERED PROFESSIONAL LAND SURVEYOR
LICENSE NO. 20014-4-18-1987
ADDRESS: 1402 WEST 11TH, WASHINGTON COUNTY, TEXAS



[Signature]
5-5-96
GUY L. WOOD
REGISTERED PROFESSIONAL LAND SURVEYOR
WASHINGTON COUNTY, TEXAS

- NOTES**
1. SEE SURVEY PLAT FOR METERS AND
 2. SEE SURVEY PLAT FOR METERS AND
 3. SEE SURVEY PLAT FOR METERS AND
 4. SEE SURVEY PLAT FOR METERS AND
 5. SEE SURVEY PLAT FOR METERS AND
 6. SEE SURVEY PLAT FOR METERS AND
 7. SEE SURVEY PLAT FOR METERS AND
 8. SEE SURVEY PLAT FOR METERS AND
 9. SEE SURVEY PLAT FOR METERS AND
 10. SEE SURVEY PLAT FOR METERS AND
 11. SEE SURVEY PLAT FOR METERS AND
 12. SEE SURVEY PLAT FOR METERS AND
 13. SEE SURVEY PLAT FOR METERS AND
 14. SEE SURVEY PLAT FOR METERS AND
 15. SEE SURVEY PLAT FOR METERS AND
 16. SEE SURVEY PLAT FOR METERS AND
 17. SEE SURVEY PLAT FOR METERS AND
 18. SEE SURVEY PLAT FOR METERS AND
 19. SEE SURVEY PLAT FOR METERS AND
 20. SEE SURVEY PLAT FOR METERS AND