

I=Inspected NI=Not Inspected NP=Not Present D=Deficient

I	NI	NP	D
---	----	----	---

II. ELECTRICAL SYSTEMS

A. Service Entrance and Panels

Panel Locations:

- Electrical panel is located in the bedroom closet

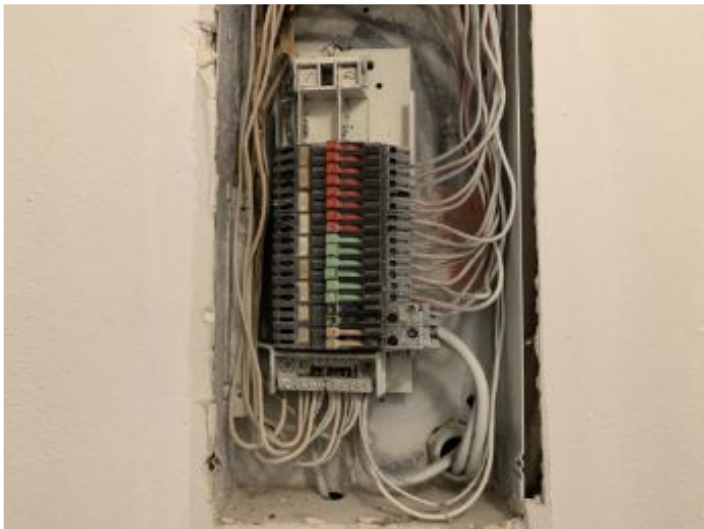
Materials and Amp Rating:

Comments:

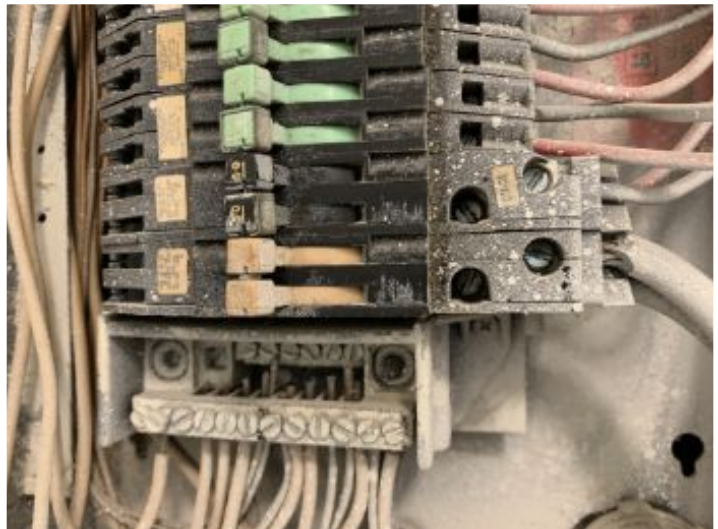
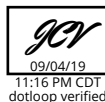
• Comment : The 2008 National Electrical Code requires that essentially all branch circuits that supply outlets in new homes must be protected by AFCI devices. Homes built before this time are not required to meet this code. The inspector will inspect for: wiring, wiring terminations, junctions, junction boxes, devices, and fixtures, operation of(GFCI) ground-fault circuit interrupter protection devices, manually test the accessible smoke alarms by use of the manufacturer's approved test or by the use of canned smoke. The inspector is not required to: inspect low voltage wiring; disassemble mechanical appliances; verify the effectiveness of smoke alarms; verify interconnectivity of smoke alarms activate smoke alarms that are being actively monitored or require the use of codes;or verify that smoke alarms are suitable for the hearing- impaired. All accessible outs will be tested.

AFCI recommended [An arc fault circuit interrupter (AFCI) is a circuit breaker that breaks the circuit when it detects an electric arc in the circuit it protects to prevent electrical fires. not required for the houses built before 2008 but recommended]

- **Not all breakers were labeled in the panel. Recommend all breakers should be labeled to all connected circuits**



Main panel - copper



no main power shutoff

