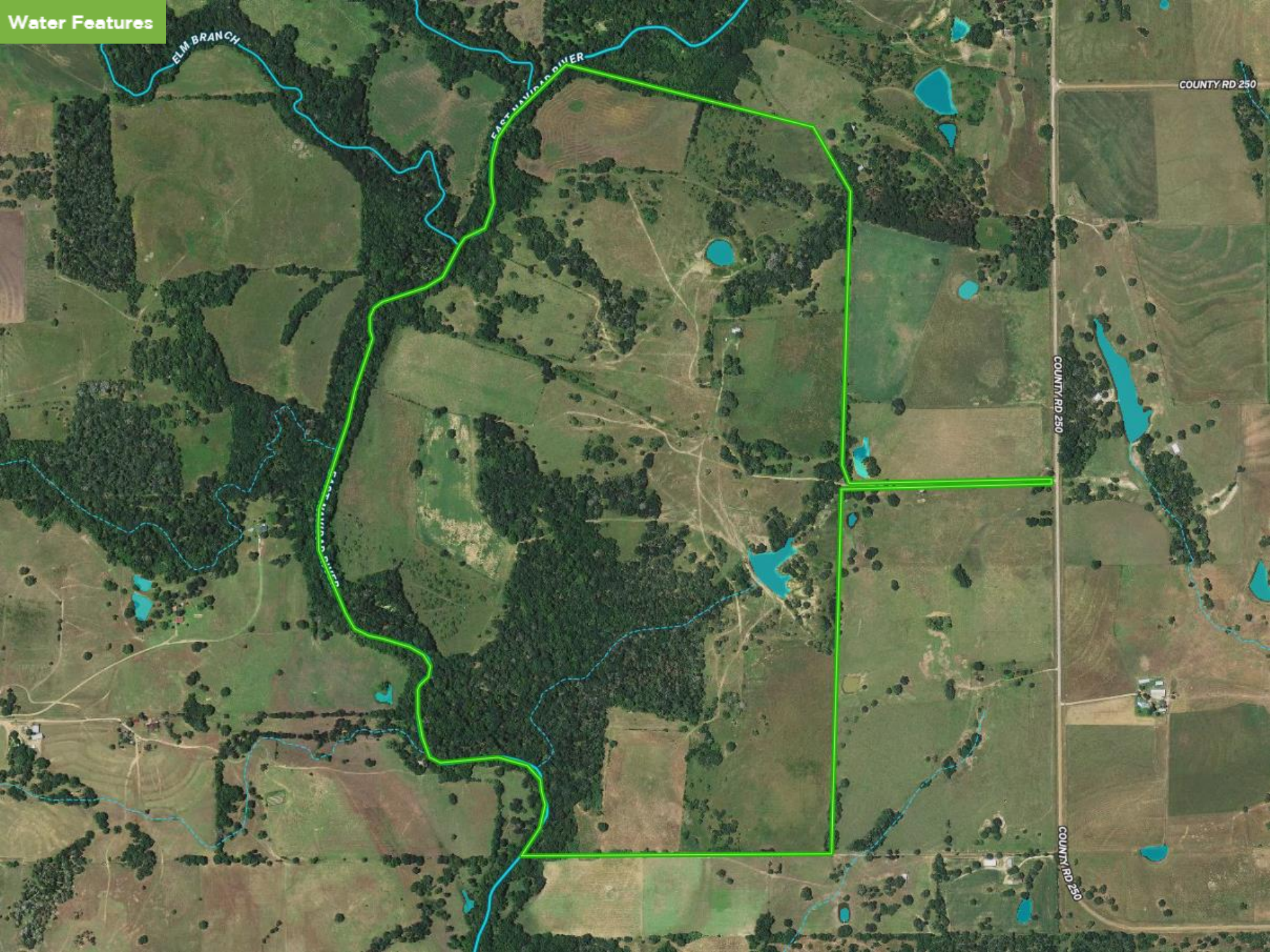


**Water Features**



ELM BRANCH

EAST MAIN RD DIVER

CALHOUN CREEK

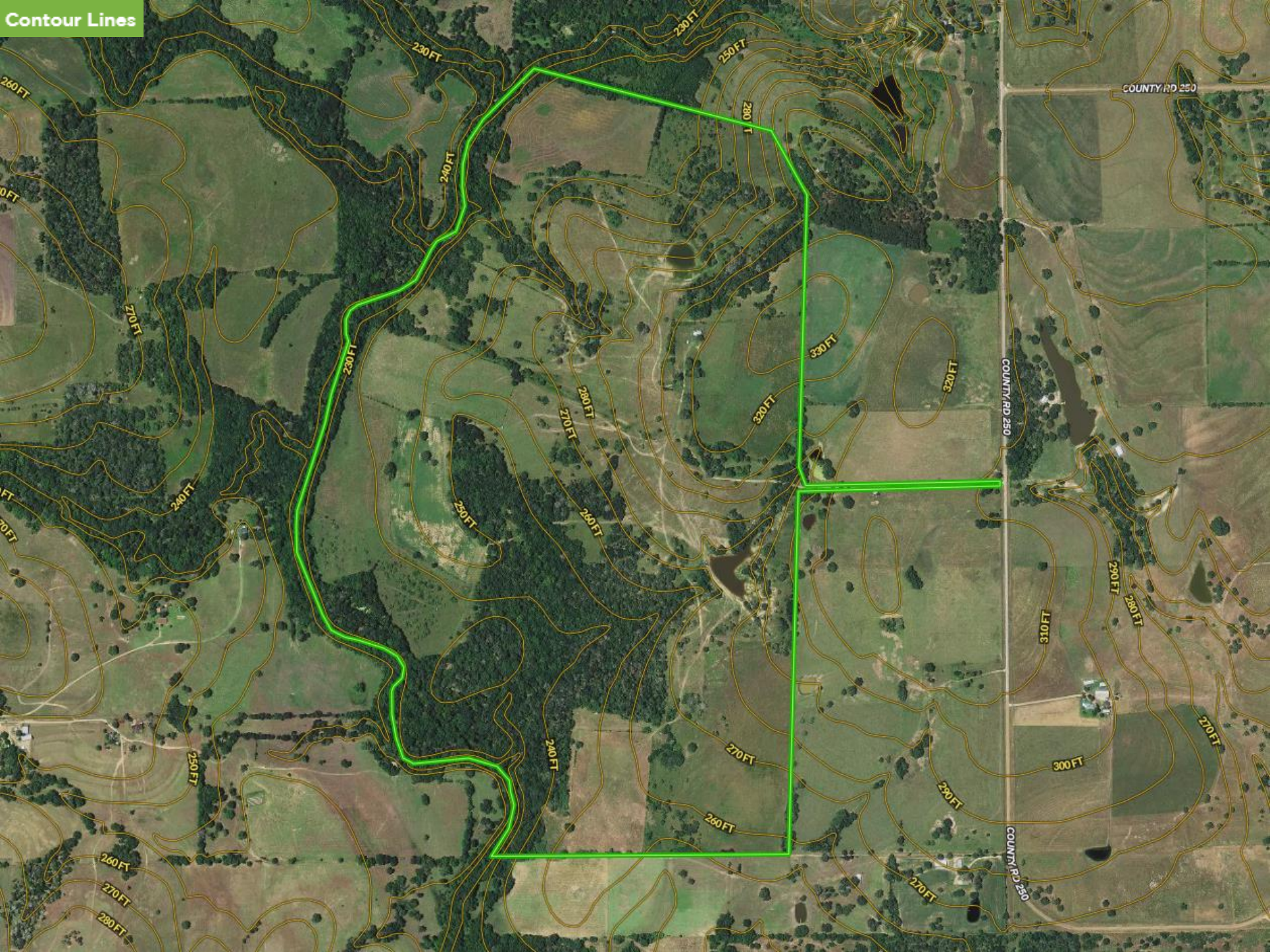
COUNTY RD 250

COUNTY RD 250

COUNTY RD 250

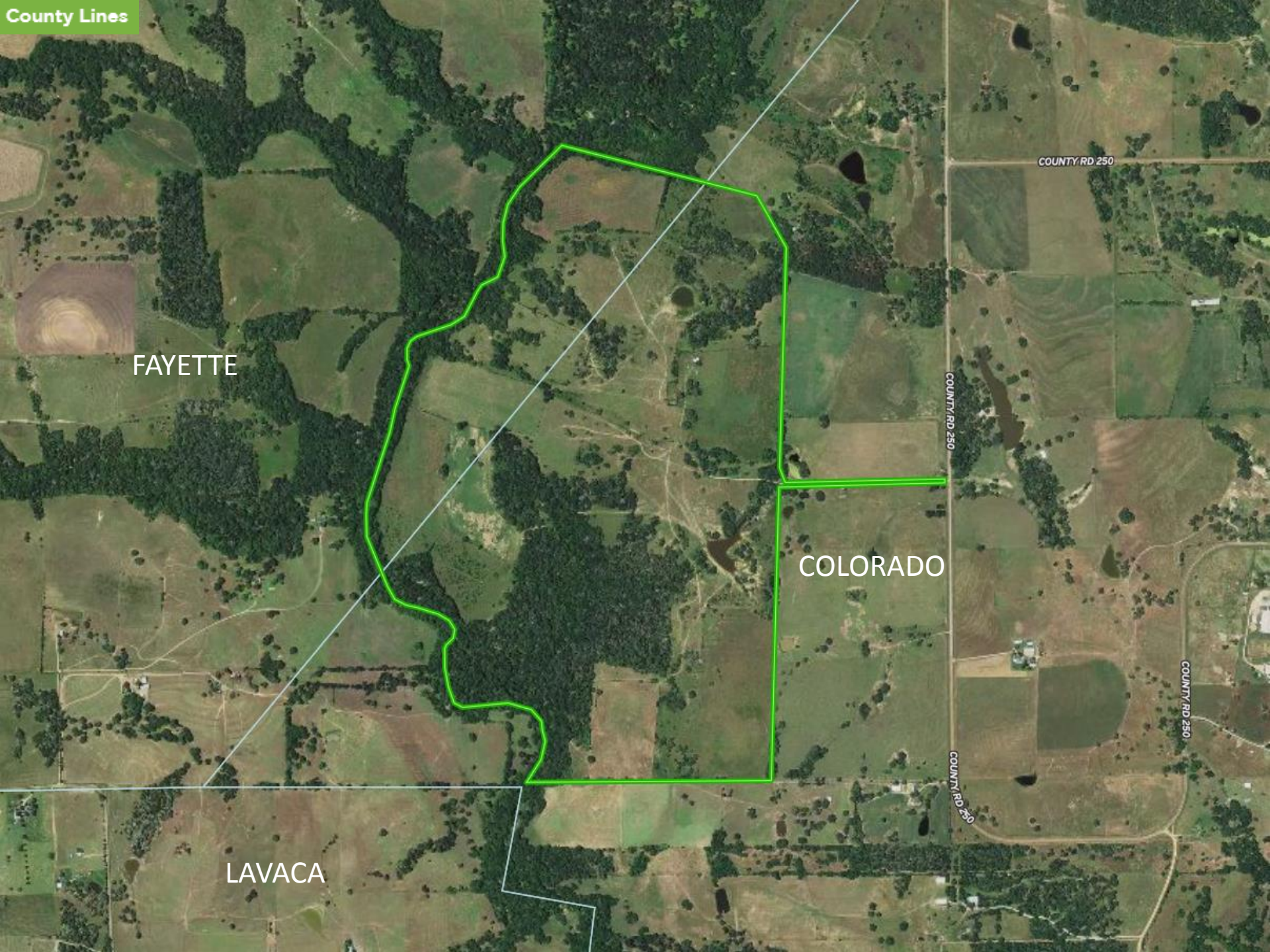


# Contour Lines





County Lines



FAYETTE

COLORADO

LAVACA

COUNTY RD 250

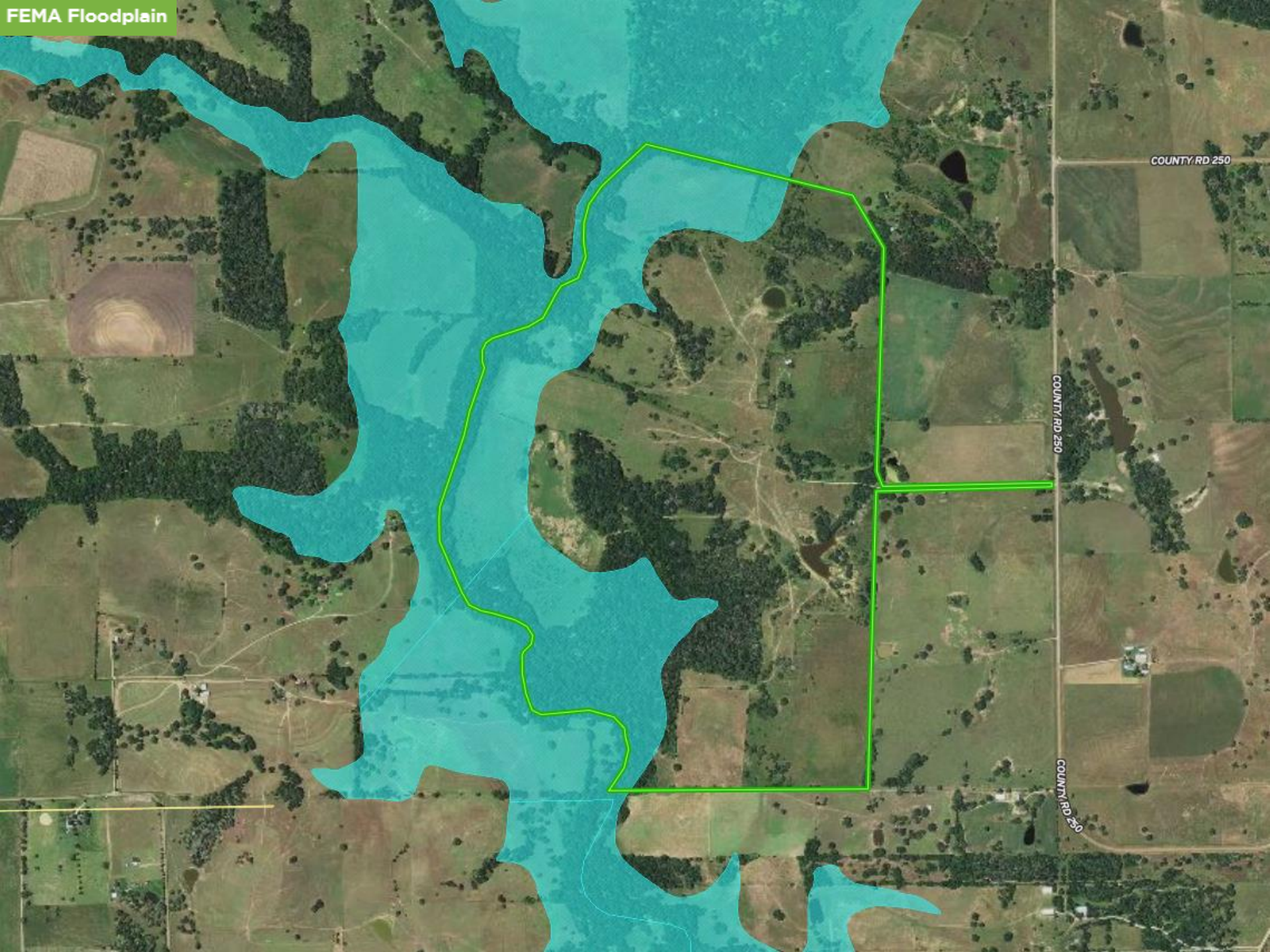
COUNTY RD 250

COUNTY RD 250

COUNTY RD 251



FEMA Floodplain



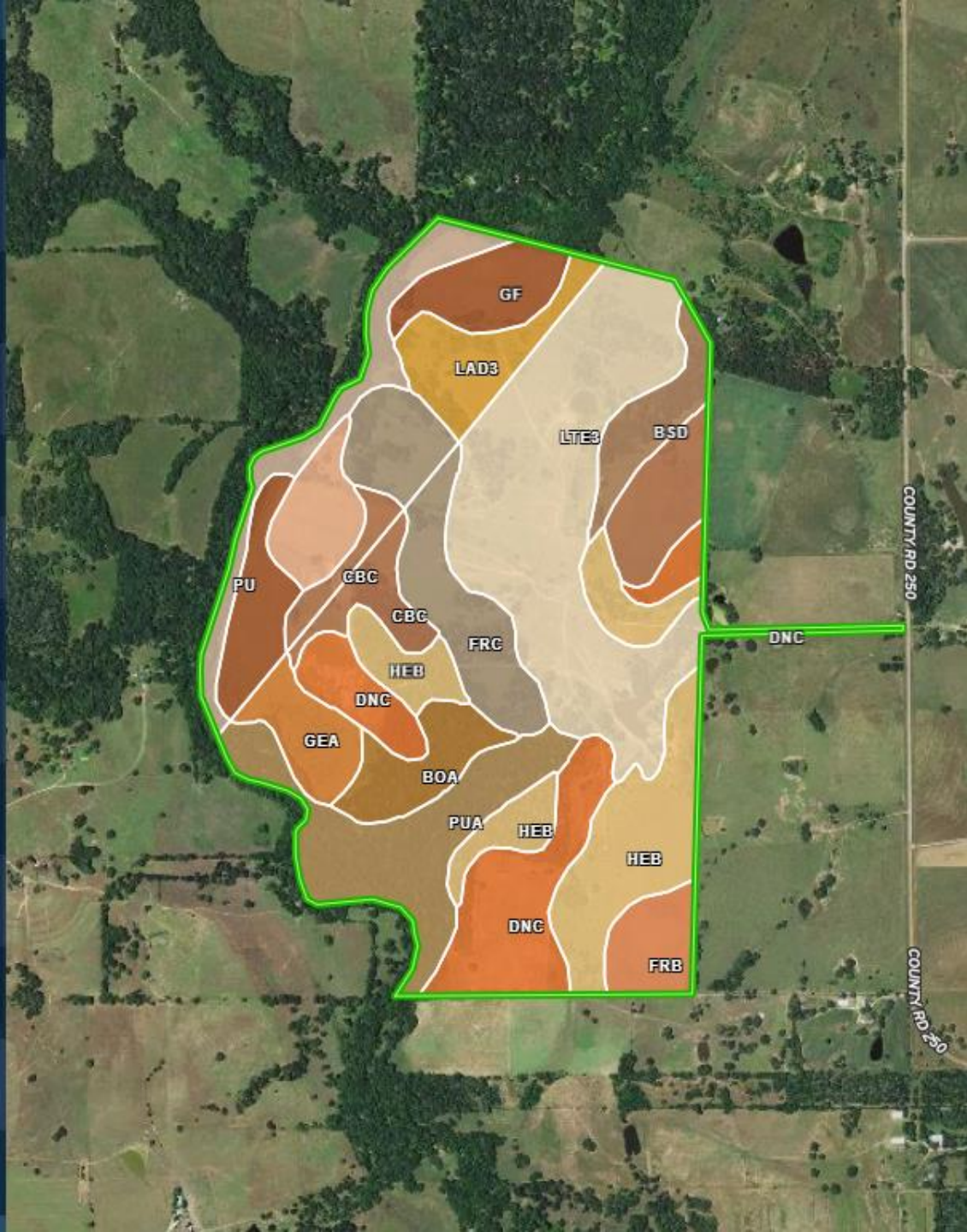
COUNTY RD 250

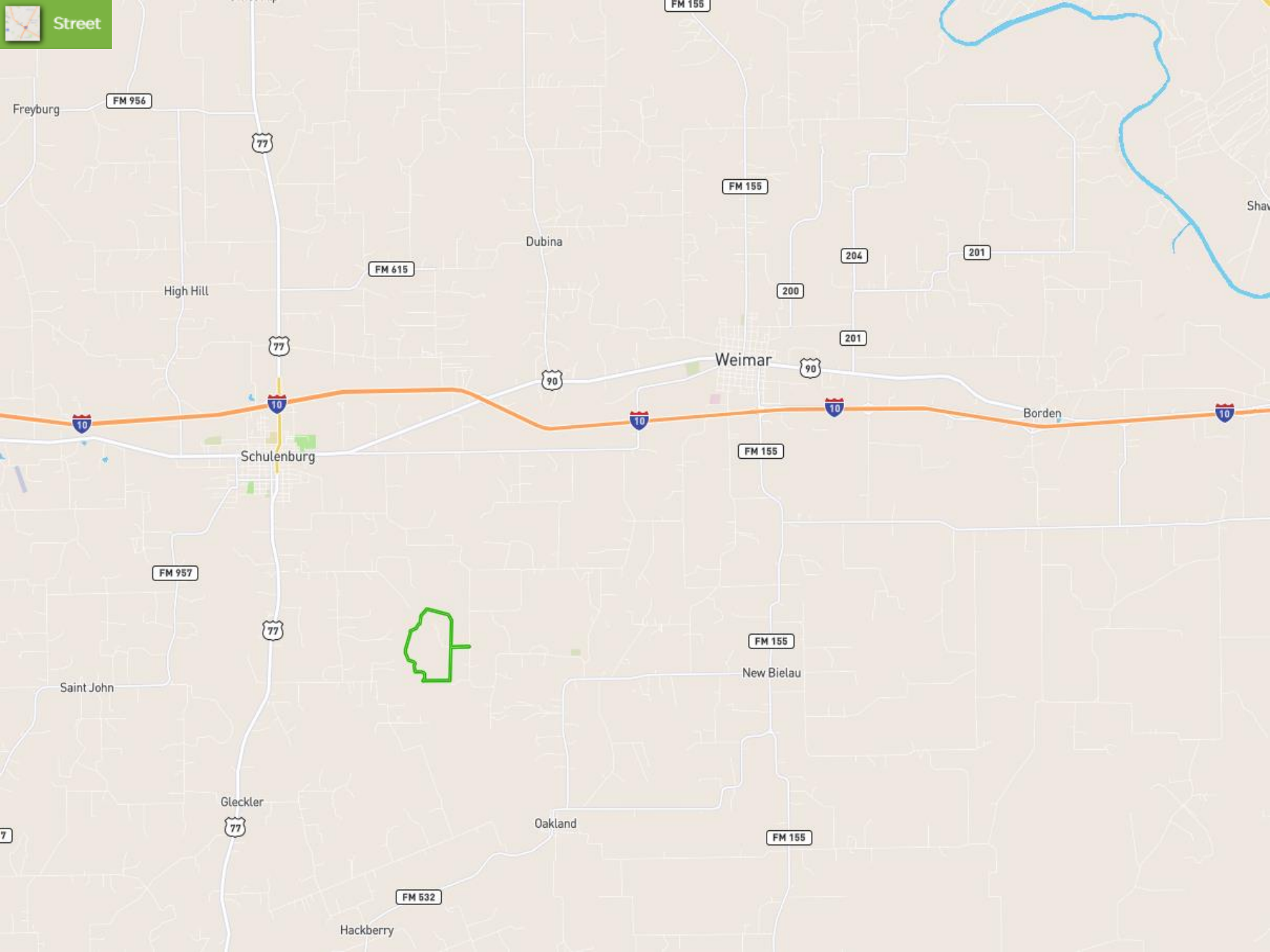
COUNTY RD 250

COUNTY RD 250

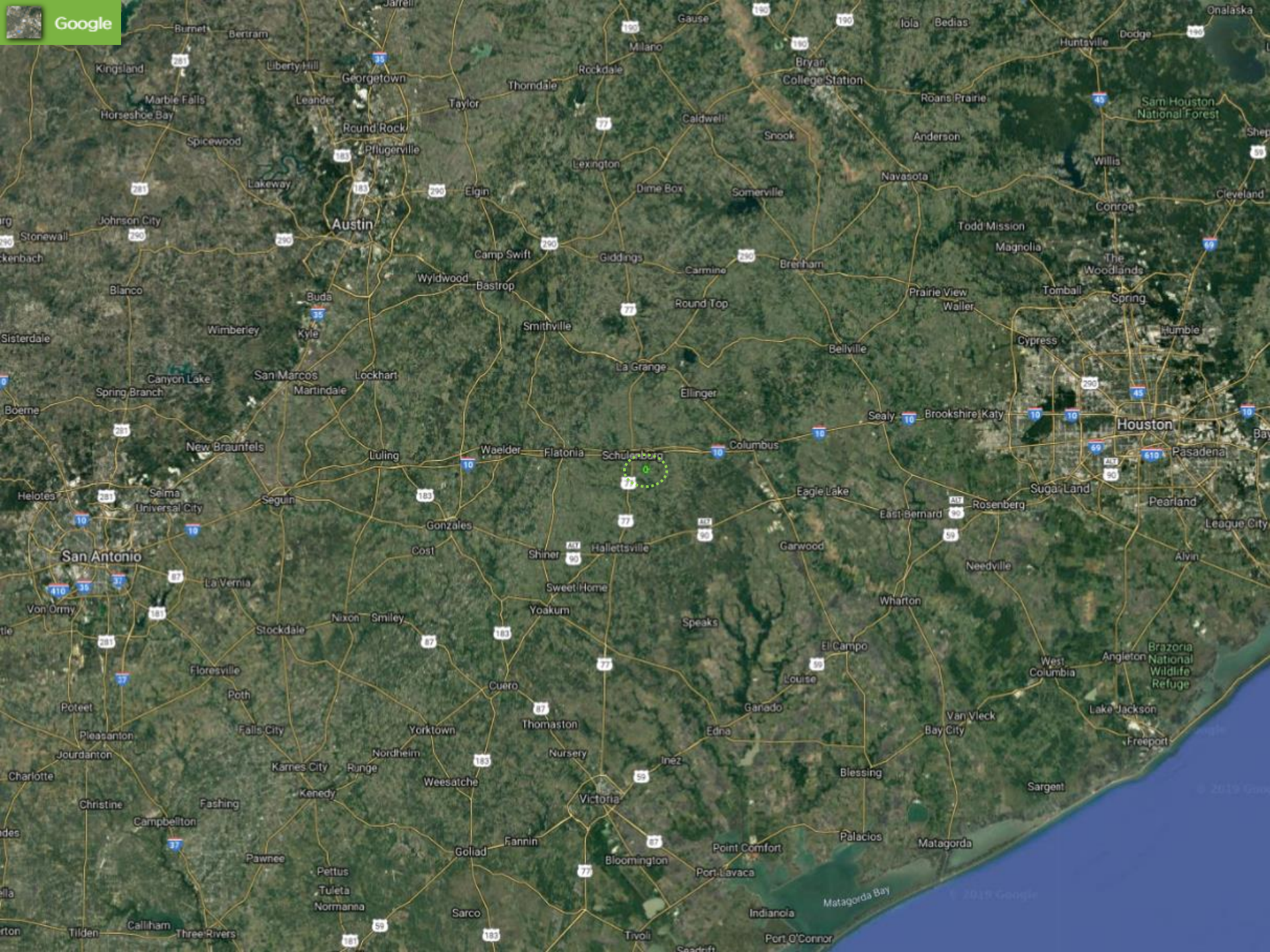


Soils	DESCRIPTION	ACRES	%	CAP	
PuA	Pursley sandy clay loam, 0 to 1 percent slopes, frequently flooded	35.4	9.1%	5w	?
DnC	Dubina loamy fine sand, 2 to 5 percent slopes	41.1	10.6%	3e	?
LtE3	Latium clay, 5 to 15 percent slopes, severely eroded	82.3	21.2%	6e	?
LaD3	Latium clay, 5 to 15 percent slopes, severely eroded	15.8	4.1%	6e	?
Gf	Ganado clay, frequently flooded	26.6	6.9%	5w	?
FrC	Frelsburg clay, 3 to 5 percent slopes	32.5	8.4%	3e	?
KnC	Knolle fine sand, 2 to 5 percent slopes	12.1	3.1%	3e	?
FrB	Frelsburg clay, 1 to 3 percent slopes	10.7	2.8%	3e	?
HeB	Hallettsville sandy clay loam, 1 to 3 percent slopes	49.7	12.8%	3s	?
BoA	Bosque clay loam, 0 to 1 percent slopes, occasionally flooded	13.3	3.4%	2e	?
CbC	Carbengle sandy clay loam, 3 to 5 percent slopes	27.6	7.1%	4e	?
GeA	Ganado clay, 0 to 1 percent slopes, occasionally flooded	11.6	3%	3w	?
CbD	Carbengle sandy clay loam, 5 to 8 percent slopes	0.005	0.001%	4e	?









Austin

Houston

San Antonio

Victoria

Schulenburg