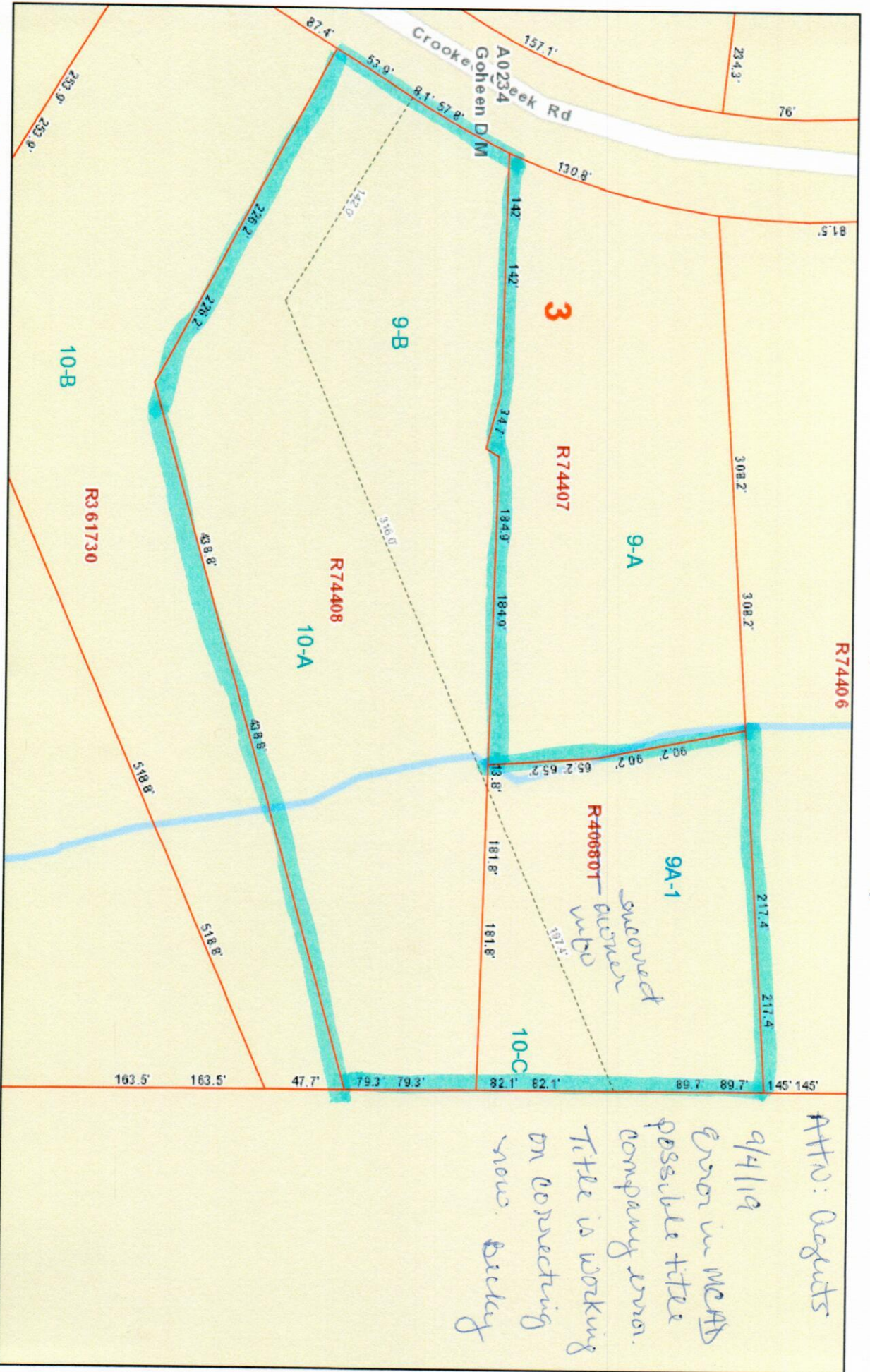


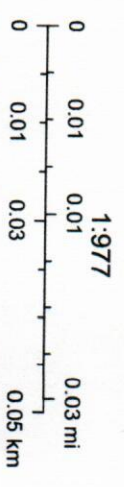
Montgomery CAD Web Map



ATTN: Deputies
 9/4/19
 Error in MEADs
 possible title
 company error.
 Title is working
 on correcting
 now. Betty

9/4/2019, 11:05:36 AM

- Abstracts
- Parcels
- Lot Lines



Disclaimer: This product is for informational purposes only and has not been prepared for or be suitable for legal, engineering, or surveying purposes. It does not represent an on-the-ground survey and represents only the approximate relative location of boundaries.

Sources: Esri, HERE, Garmin, USGS, Intermap, INCREMENT P, NRCan, Esri Japan, METI, Esri China (Hong Kong), Esri Korea, Esri (Thailand), Montgomery County Appraisal District, BIS Consulting - www.bisconsulting.com