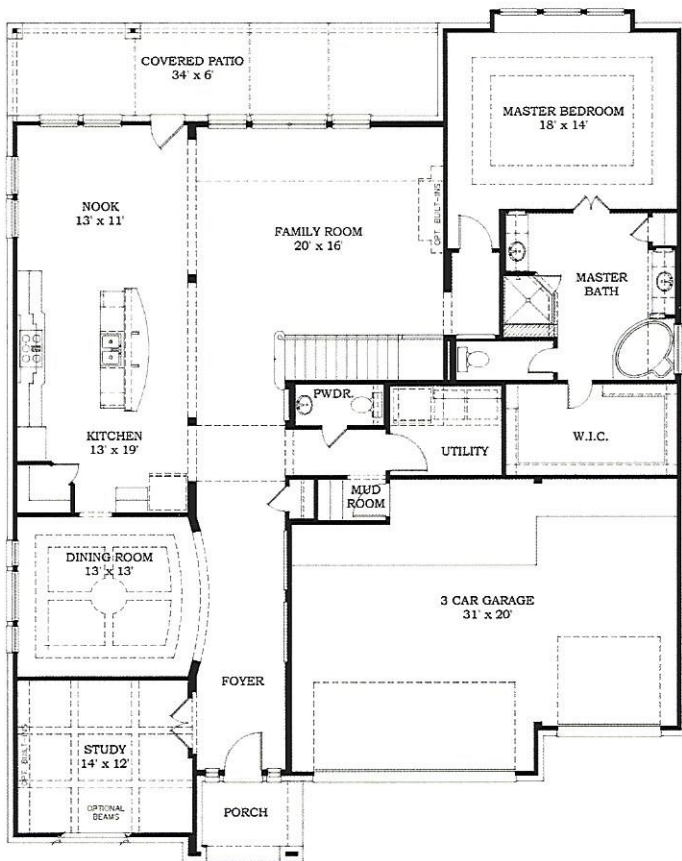
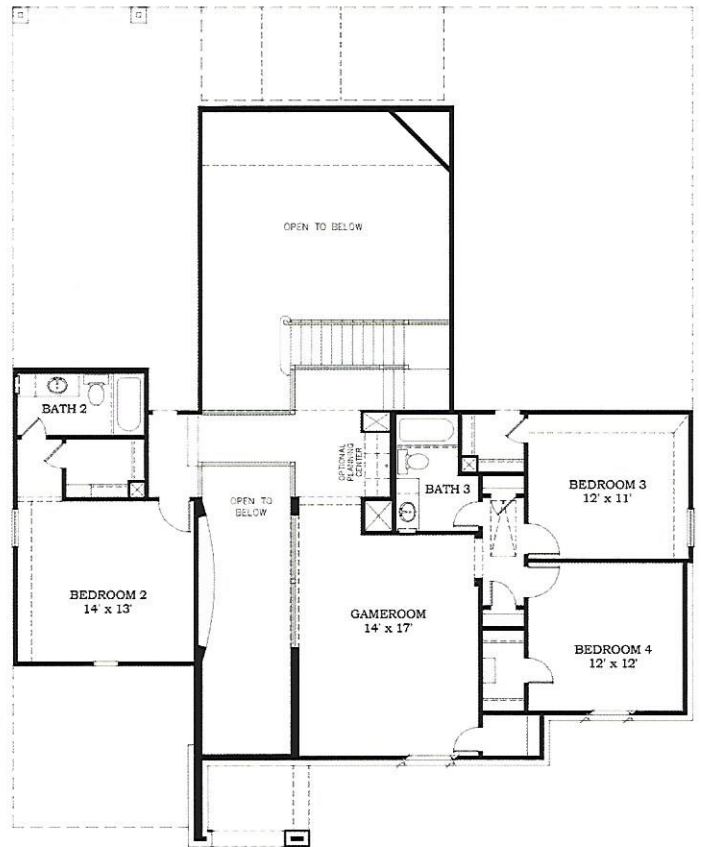


The Berkshire

4 Bedrooms | 3.5 Baths | 3-Car Garage | 3,749 Sq. Ft.



FIRST FLOOR PLAN

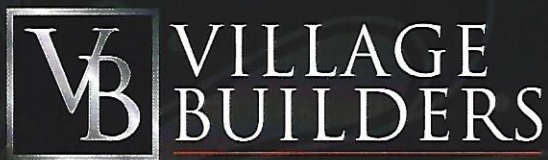


SECOND FLOOR PLAN

Wentworth Collection
Plan#5432

Plans and elevations are artist's renderings and may contain options, which are not standard on all models. Lennar reserves the right to make changes to these floor plans, specifications, dimensions and elevations without prior notice. Stated dimensions and square footage are approximate and should not be used as representation of the home's precise or actual size. Any statement, verbal or written, regarding "under air" or "finished area" or any other description or modifier of the square footage size of any home is a shorthand description of the manner in which the square footage was estimated and should not be construed to indicate certainty. Copyright © 2011 Lennar Corporation. Village Builders and the Village Builders logo are registered service marks of Lennar Corporation and/or its subsidiaries. 4/13





Wentworth Collection Features

KITCHEN:

- GE® Built-In Appliance Package
 - Stainless Steel Dishwasher
 - 30" Stainless Steel Self-cleaning Oven
 - 36" Stainless Steel Gas Cooktop with Sealed Burners
 - Stainless Steel Microwave with Soft Touch Panel
- Ceramic Tile in Kitchen and Breakfast Area
- 42" Raised-panel Stained Cabinets
- Decorative Vent Hood Cabinet
- Banks of Drawers at Cooktop Area
- Granite Countertops with Choice of Edge
- Ceramic Tile Backsplash on Diagonal
- Deep, Dual-basin Stainless Steel, Undermount Sink
- Oil-rubbed Bronze Gourmet Pull-out Faucet
- Tip-out Drawer at Sink
- Insulated Garbage Disposal
- Recessed Lighting in Kitchen and Breakfast Areas
- Pendant Lighting at High Bar (per plan)
- Under-cabinet Lighting
- Electric and Gas Connections at Cooktop
- Walk-in Pantry, (per plan)

MASTER BATH:

- Ceramic Tile on Bath Floor, Shower Walls and Tub Surround
- Oval Garden Tub with Therapeutic Jets
- Opaque Rain Glass Window at Tub (per plan)
- Climate-controlled Master Closet
- High, Stained Vanity Cabinets
- Dual, Cultured Marble Vanity Tops
- Coordinating Medicine Cabinet (per plan)
- Oil-rubbed Bronze Washerless Faucets
- Oil-rubbed Bronze Plumbing Accessories
- Elongated Commode

SECONDARY BATHS:

- Ceramic Tile Floors and Shower Surrounds
- White, Painted Vanity Cabinets
- Cultured Marble Vanity Tops
- Coordinating Medicine Cabinet (per plan)
- Oil-rubbed Bronze Washerless Faucets
- Oil-rubbed Bronze Plumbing Accessories
- Elongated Commode

POWDER ROOM:

- Ceramic Tile Flooring
- Porcelain Pedestal Sink
- Oil-rubbed, Bronze, Wide Spread Washerless Faucet
- Oil-rubbed Bronze Plumbing Accessories
- Elongated Commode
- Framed Decorative Mirror

UTILITY ROOM:

- Ceramic Tile Flooring
- Painted Upper Cabinets for Convenient Storage
- Electric and Gas Dryer Connections
- Freezer Space (per plan)

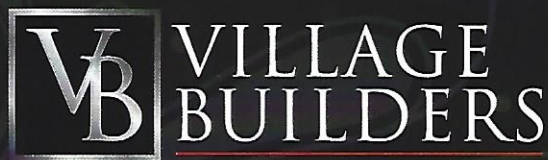
INSIDE YOUR NEW VILLAGE BUILDERS HOME:

- Ceramic Tile in Foyer
- Oil-rubbed Bronze Door Hardware
- Keyless Front Door Entry Handleset
- Continuous-filament Carpet with Stainguard
- ½", 6-lb. Rebond Carpet Pad
- Crown Moulding in Master Bedroom, Family Room, Kitchen/Breakfast, Dining Room, Study and Foyer (per plan)
- 5 ¼" Base Boards Throughout First Floor Living Area
- Chair Rail in Dining Room
- 5-Blade Ceiling Fan with Light Kit in Master Bedroom, Secondary Bedrooms, Family Room, Study and Game Room
- Direct Vent Fireplace with Gas Logs
- Cast-stone Fireplace Surround
- Divided Lite Windows to Compliment Front Elevations
- Rounded Drywall Corners Throughout Home (excludes window returns)
- Monterey Drag Textured Walls and Ceilings
- Divided Lite French Doors at Study (per plan)
- Iron Stair Balusters (per plan)
- Stained Starter Step
- Backpack Rack with Storage Bench (per plan)
- Designer Light Fixtures Throughout Home
- Decora® Rocker Switches Throughout Home
- Dimmer Switch at Dining Room
- 8' Raised-panel Interior Doors on First Floor
- Security System with Motion Detector, 2 Keypads and Sensors at First Floor Windows and Exterior Doors
- Home Automation Package with Security Camera

DESIGN
STUDIO

550 Greens Pkwy, Ste 200, Houston, TX 77067

VILLAGEBUILDERS.COM



Wentworth Collection Features

ENERGY STAR® RATED BUILDER/ ENERGY EFFICIENCY/CONSTRUCTION:

- Energy Star Ratings Performed to Environmental Protection Agency's ENERGY STAR® Guidelines
- Exterior Air Filtration Damper
- Programmable Thermostat
- 16-SEER Air Conditioning System
- Radiant Barrier Roof Decking
- (2) 40-Gallon High Efficiency Water Heaters in Homes with 3 or More Baths, per plan
- R-38 Insulation in Flat Ceilings (where accessible)
- R-22 Insulation on Sloped Ceilings and Attic Walls
- R-13 Insulation and R-3 Sheathing on Exterior Walls (where applicable)
- Poly Seal Insulation Throughout to Minimize Air Infiltration and Ensure Energy Efficiency
- High Performance, Triple Coated Low E Insulated Windows for Added Energy Efficiency
- Tilt Out Sash on All Operable Windows
- Vinyl Window Frames in Tan Color

CONSTRUCTION:

- Garage Door Opener with (2) Remotes
- Structured Wiring System to Meet or Exceed Development Specifications
- Wiring for Telephone Outlets in All Bedrooms, Study, Kitchen, Game Room and Computer Space, per plan
- Wiring for Cable Outlets in all Bedrooms, Study, Game Room and Computer Space, per plan
- Multi-port Branch and Tee Plumbing System
- 3000 PSI Post-Tension Foundation Certified by an Independent Engineer
- Engineered Subfloor Framing System
- 3/4-Inch Tongue and Groove Subflooring Secured with Screws and Adhesive on Two Story Homes
- Thorough Inspection Process Conducted at Critical Stages of Construction
- Quality Assurance Inspection Prior to New Home Orientation

OUTSIDE YOUR NEW VILLAGE BUILDERS HOME:

- Weatherproof Fiber-Cement Siding with 30 Year Warranty
- Fully Fenced Rear Yard with One Walk Gate, per community guidelines
- Full Sod in Front and Rear Yards
- Fully Automatic Irrigation System
- Full Gutters, per community
- 8' Mahogany Front Door with Insulated Leaded Glass Insert
- 8' Full Lite Back Patio Door
- Brick Front Porch
- 30-Year High Quality Dimensional Shingles
- Ridge Vents and Air Hawks with Continuous Soffit Vents
- Designer Coach Light at Entry and Garage, per plan
- Hose Bibbs at Front and Rear of Home
- Genuine Fired Clay Brick
- Masonry Address Block
- Covered Concrete Patio with Ceiling Fan, per plan
- Deadbolt Locks on All Exterior Doors
- Weatherproof Exterior Outlets at Front and Rear of Home
- Design Enhanced Steel Over-Head Garage Door

INTERIOR DESIGN CONSULTATION:

- All customers buying at pre-construction receive a complimentary 2-hour design consultation with a professional designer at the Village Builders Design Studio.

DESIGN
STUDIO

550 Greens Pkwy, Ste 200, Houston, TX 77067

VILLAGEBUILDERS.COM

The specific features in a home may vary from home to home and from one community to another. We reserve the right to substitute equipment, materials, appliances and brand names with items of equal or higher, in our sole opinion, value. Color and size variations may occur. The prices of our homes, included features, and available locations are subject to change without notice. Please see the actual home purchase agreement for additional information, disclosures, and disclaimers relating to the home and its features. Void where prohibited by law. Copyright © 2012. Lennar Corporation. Village Builders and the Village Builders logo are service marks of Lennar Corporation and/or its subsidiaries. 3/12

