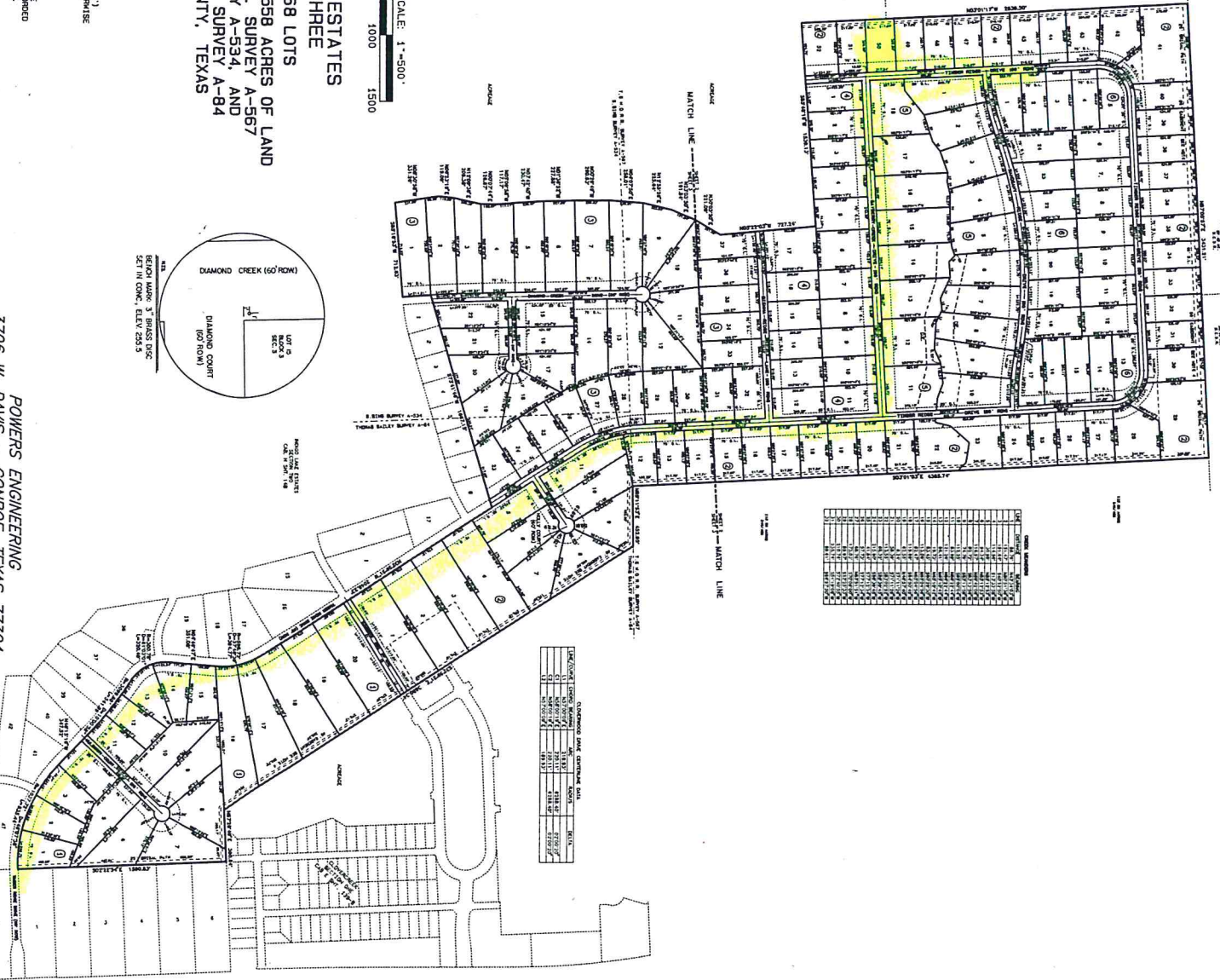
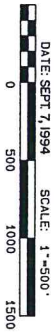
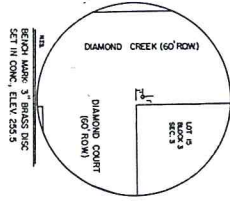


**INDIGO LAKE ESTATES
SECTION THREE**
6 BLOCKS * 168 LOTS
A SUBDIVISION OF 472.458 ACRES OF LAND
IN THE T. & N.O.R. SURVEY A-567
THE THOMAS BAILEY SURVEY A-84
MONTGOMERY COUNTY, TEXAS



LOT NO.	ACRES	AREA (SQ. FT.)	AREA (ACRES)
1	0.01	1,360	0.01
2	0.01	1,360	0.01
3	0.01	1,360	0.01
4	0.01	1,360	0.01
5	0.01	1,360	0.01
6	0.01	1,360	0.01
7	0.01	1,360	0.01
8	0.01	1,360	0.01
9	0.01	1,360	0.01
10	0.01	1,360	0.01
11	0.01	1,360	0.01
12	0.01	1,360	0.01
13	0.01	1,360	0.01
14	0.01	1,360	0.01
15	0.01	1,360	0.01
16	0.01	1,360	0.01
17	0.01	1,360	0.01
18	0.01	1,360	0.01
19	0.01	1,360	0.01
20	0.01	1,360	0.01
21	0.01	1,360	0.01
22	0.01	1,360	0.01
23	0.01	1,360	0.01
24	0.01	1,360	0.01
25	0.01	1,360	0.01
26	0.01	1,360	0.01
27	0.01	1,360	0.01
28	0.01	1,360	0.01
29	0.01	1,360	0.01
30	0.01	1,360	0.01
31	0.01	1,360	0.01
32	0.01	1,360	0.01
33	0.01	1,360	0.01
34	0.01	1,360	0.01
35	0.01	1,360	0.01
36	0.01	1,360	0.01
37	0.01	1,360	0.01
38	0.01	1,360	0.01
39	0.01	1,360	0.01
40	0.01	1,360	0.01
41	0.01	1,360	0.01
42	0.01	1,360	0.01
43	0.01	1,360	0.01
44	0.01	1,360	0.01
45	0.01	1,360	0.01
46	0.01	1,360	0.01
47	0.01	1,360	0.01
48	0.01	1,360	0.01
49	0.01	1,360	0.01
50	0.01	1,360	0.01
51	0.01	1,360	0.01
52	0.01	1,360	0.01
53	0.01	1,360	0.01
54	0.01	1,360	0.01
55	0.01	1,360	0.01
56	0.01	1,360	0.01
57	0.01	1,360	0.01
58	0.01	1,360	0.01
59	0.01	1,360	0.01
60	0.01	1,360	0.01
61	0.01	1,360	0.01
62	0.01	1,360	0.01
63	0.01	1,360	0.01
64	0.01	1,360	0.01
65	0.01	1,360	0.01
66	0.01	1,360	0.01
67	0.01	1,360	0.01
68	0.01	1,360	0.01
69	0.01	1,360	0.01
70	0.01	1,360	0.01
71	0.01	1,360	0.01
72	0.01	1,360	0.01
73	0.01	1,360	0.01
74	0.01	1,360	0.01
75	0.01	1,360	0.01
76	0.01	1,360	0.01
77	0.01	1,360	0.01
78	0.01	1,360	0.01
79	0.01	1,360	0.01
80	0.01	1,360	0.01
81	0.01	1,360	0.01
82	0.01	1,360	0.01
83	0.01	1,360	0.01
84	0.01	1,360	0.01
85	0.01	1,360	0.01
86	0.01	1,360	0.01
87	0.01	1,360	0.01
88	0.01	1,360	0.01
89	0.01	1,360	0.01
90	0.01	1,360	0.01
91	0.01	1,360	0.01
92	0.01	1,360	0.01
93	0.01	1,360	0.01
94	0.01	1,360	0.01
95	0.01	1,360	0.01
96	0.01	1,360	0.01
97	0.01	1,360	0.01
98	0.01	1,360	0.01
99	0.01	1,360	0.01
100	0.01	1,360	0.01



SECTION	ACRES	AREA (SQ. FT.)	AREA (ACRES)
1	0.01	1,360	0.01
2	0.01	1,360	0.01
3	0.01	1,360	0.01
4	0.01	1,360	0.01
5	0.01	1,360	0.01
6	0.01	1,360	0.01
7	0.01	1,360	0.01
8	0.01	1,360	0.01
9	0.01	1,360	0.01
10	0.01	1,360	0.01
11	0.01	1,360	0.01
12	0.01	1,360	0.01
13	0.01	1,360	0.01
14	0.01	1,360	0.01
15	0.01	1,360	0.01
16	0.01	1,360	0.01
17	0.01	1,360	0.01
18	0.01	1,360	0.01
19	0.01	1,360	0.01
20	0.01	1,360	0.01
21	0.01	1,360	0.01
22	0.01	1,360	0.01
23	0.01	1,360	0.01
24	0.01	1,360	0.01
25	0.01	1,360	0.01
26	0.01	1,360	0.01
27	0.01	1,360	0.01
28	0.01	1,360	0.01
29	0.01	1,360	0.01
30	0.01	1,360	0.01
31	0.01	1,360	0.01
32	0.01	1,360	0.01
33	0.01	1,360	0.01
34	0.01	1,360	0.01
35	0.01	1,360	0.01
36	0.01	1,360	0.01
37	0.01	1,360	0.01
38	0.01	1,360	0.01
39	0.01	1,360	0.01
40	0.01	1,360	0.01
41	0.01	1,360	0.01
42	0.01	1,360	0.01
43	0.01	1,360	0.01
44	0.01	1,360	0.01
45	0.01	1,360	0.01
46	0.01	1,360	0.01
47	0.01	1,360	0.01
48	0.01	1,360	0.01
49	0.01	1,360	0.01
50	0.01	1,360	0.01
51	0.01	1,360	0.01
52	0.01	1,360	0.01
53	0.01	1,360	0.01
54	0.01	1,360	0.01
55	0.01	1,360	0.01
56	0.01	1,360	0.01
57	0.01	1,360	0.01
58	0.01	1,360	0.01
59	0.01	1,360	0.01
60	0.01	1,360	0.01
61	0.01	1,360	0.01
62	0.01	1,360	0.01
63	0.01	1,360	0.01
64	0.01	1,360	0.01
65	0.01	1,360	0.01
66	0.01	1,360	0.01
67	0.01	1,360	0.01
68	0.01	1,360	0.01
69	0.01	1,360	0.01
70	0.01	1,360	0.01
71	0.01	1,360	0.01
72	0.01	1,360	0.01
73	0.01	1,360	0.01
74	0.01	1,360	0.01
75	0.01	1,360	0.01
76	0.01	1,360	0.01
77	0.01	1,360	0.01
78	0.01	1,360	0.01
79	0.01	1,360	0.01
80	0.01	1,360	0.01
81	0.01	1,360	0.01
82	0.01	1,360	0.01
83	0.01	1,360	0.01
84	0.01	1,360	0.01
85	0.01	1,360	0.01
86	0.01	1,360	0.01
87	0.01	1,360	0.01
88	0.01	1,360	0.01
89	0.01	1,360	0.01
90	0.01	1,360	0.01
91	0.01	1,360	0.01
92	0.01	1,360	0.01
93	0.01	1,360	0.01
94	0.01	1,360	0.01
95	0.01	1,360	0.01
96	0.01	1,360	0.01
97	0.01	1,360	0.01
98	0.01	1,360	0.01
99	0.01	1,360	0.01
100	0.01	1,360	0.01

- NOTES:
1. THERE IS A TEN FOOT (10') UTILITY EASEMENT ALONG BOTH SIDES OF ALL STREETS.
 2. THERE IS HEREBY DEDICATED A TWENTY FOOT (20') UTILITY AND DRAINAGE EASEMENT LYING TEN FEET (10') ON EITHER SIDE OF ALL SIDE LOT LINES UNLESS OTHERWISE NOTED.
 3. THERE IS A TWENTY FIVE FOOT (25') BUILDING LINE ALONG ALL SIDE AND REAR LOT LINES.
 4. UNREGISTERED PLATTING, RECORDS, EASEMENTS AND BOUNDARIES AS DEFINED BY SURFACE USE AGREEMENT RECORDED UNDER COUNTY CLERK'S FILE NO. 934335 OF THE REAL PROPERTY RECORDS OF MONTGOMERY COUNTY, TEXAS.

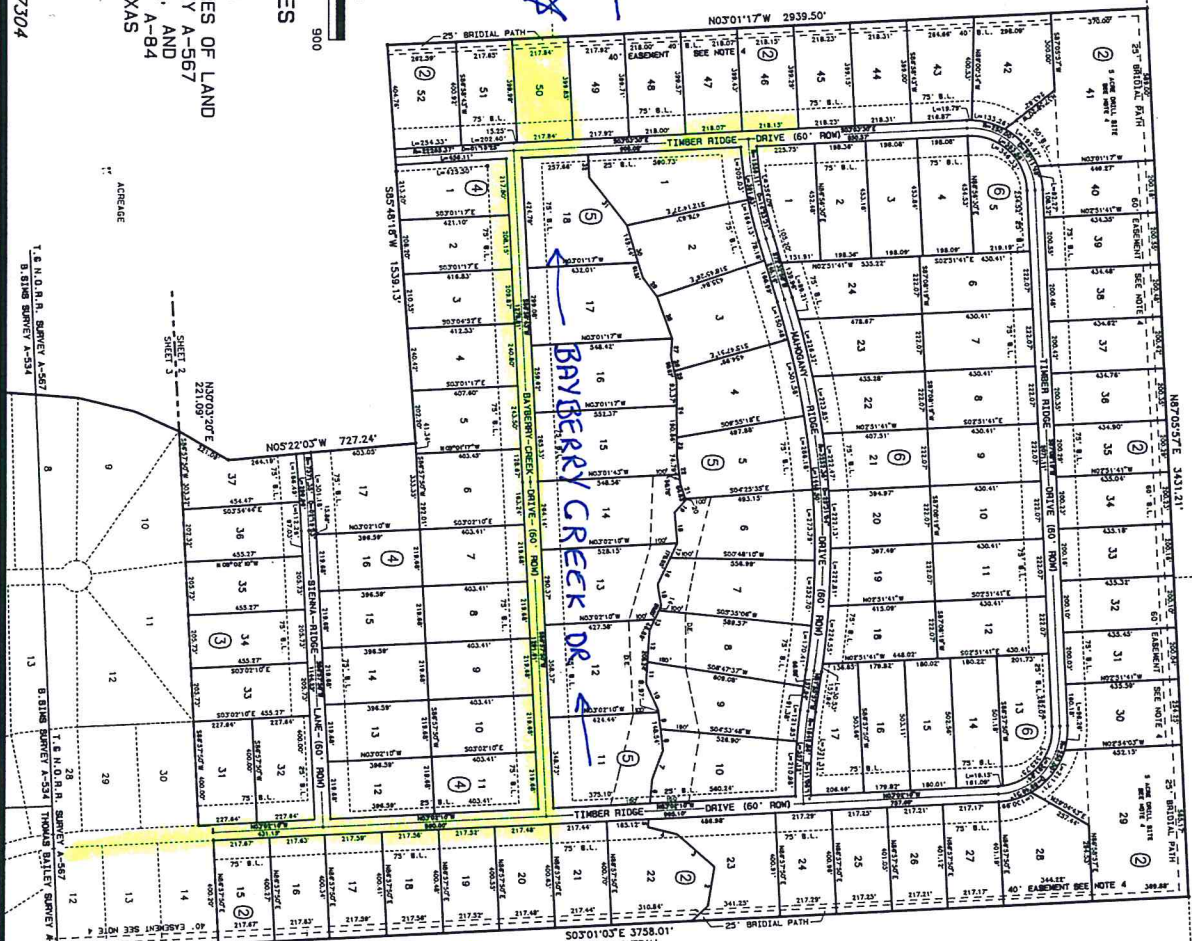
POWERS ENGINEERING
3706 W. DAVIS - CONROE, TEXAS 77304

OWNERS: PROPERTIES OF THE SOUTHWEST
2725 NICHOLS SAKHILL RD.
MADRID, TX 77555

3706 W. DAVIS - CONROE, TEXAS 77304
 POWERS ENGINEERING
 DATE: SEPT 7, 1994 SCALE: 1"=300'

A SUBDIVISION OF 472.4558 ACRES OF LAND
 IN THE T. & N.O.R.R. SURVEY A-567
 THE B. SIMS SURVEY A-534, AND
 THE THOMAS BAILEY SURVEY A-84
 MONTGOMERY COUNTY, TEXAS

INDIGO LAKE ESTATES
 SECTION THREE
 6 BLOCKS * 168 LOTS



118.96 ACRES
 3.84/483

LINE	DISTANCE	BEARING
1	151.47	N82°23'32"W
2	191.64	S62°23'02"W
3	114.56	S13°13'52"W
4	64.34	N85°01'53"W
5	118.57	N68°42'08"W
6	62.72	S81°17'28"W
7	112.20	S82°00'04"W
8	62.41	N85°01'53"W
9	118.57	N68°42'08"W
10	112.20	S82°00'04"W
11	62.41	N85°01'53"W
12	118.57	N68°42'08"W
13	62.41	N85°01'53"W
14	118.57	N68°42'08"W
15	62.41	N85°01'53"W
16	118.57	N68°42'08"W
17	62.41	N85°01'53"W
18	118.57	N68°42'08"W
19	62.41	N85°01'53"W
20	118.57	N68°42'08"W
21	62.41	N85°01'53"W
22	118.57	N68°42'08"W
23	62.41	N85°01'53"W
24	118.57	N68°42'08"W
25	62.41	N85°01'53"W
26	118.57	N68°42'08"W
27	62.41	N85°01'53"W
28	118.57	N68°42'08"W
29	62.41	N85°01'53"W
30	118.57	N68°42'08"W
31	62.41	N85°01'53"W
32	118.57	N68°42'08"W

Timber Ridge Dr

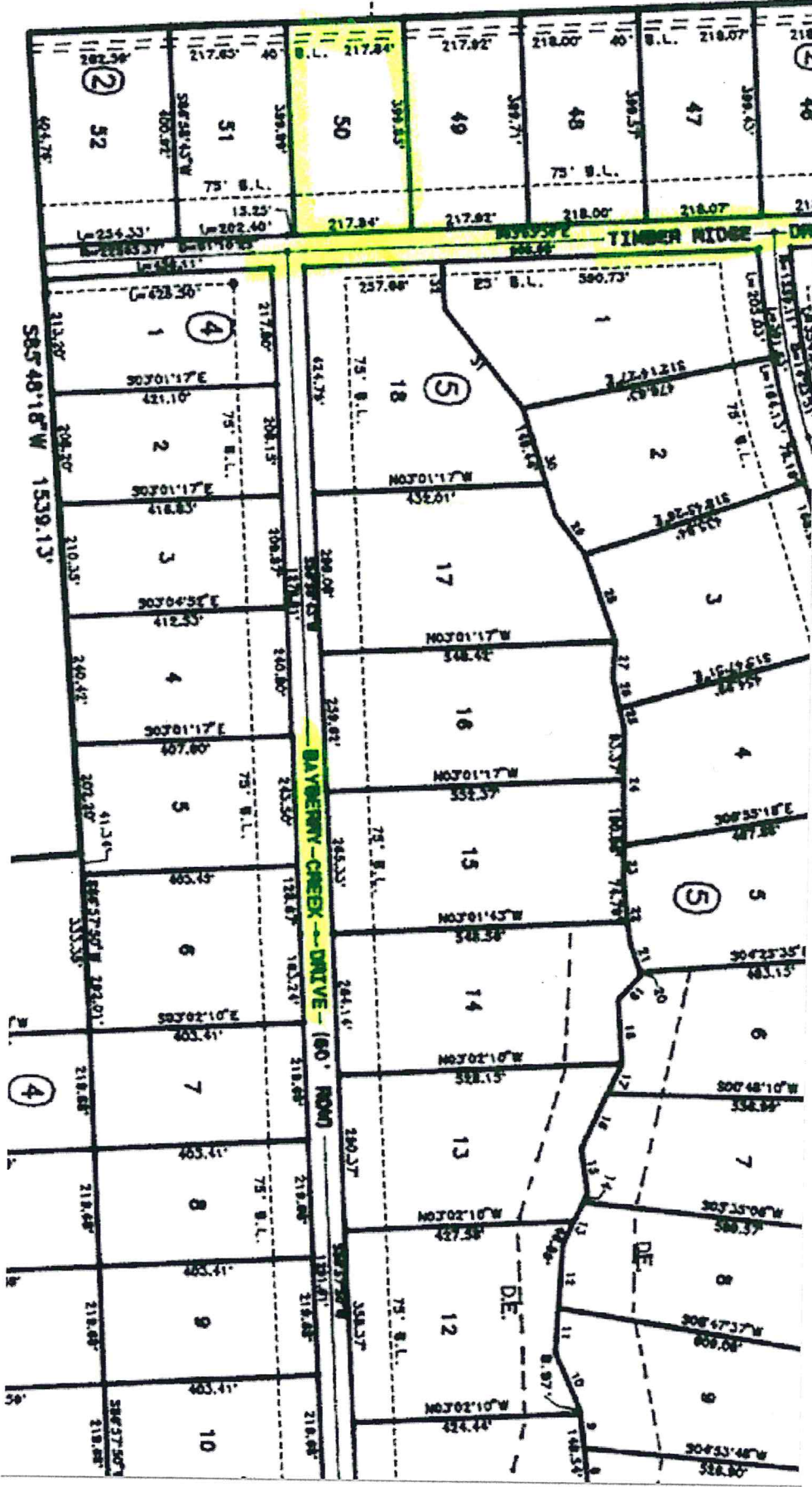
303°10'35" E 3758.01'
 4385.74' OVERALL

OWNERS: PROPERTIES OF THE SOUTHWEST
 2725 NICHOLS SHAWL RD.
 MARSHALL, TEXAS 77355

N03°01'17"W

RETREAT BARR. (PARTICULARS)

PIA PAVING BARR. (PARTICULARS)



S85°48'18\"/>

(4)

(4)

(2)

(5)

(5)