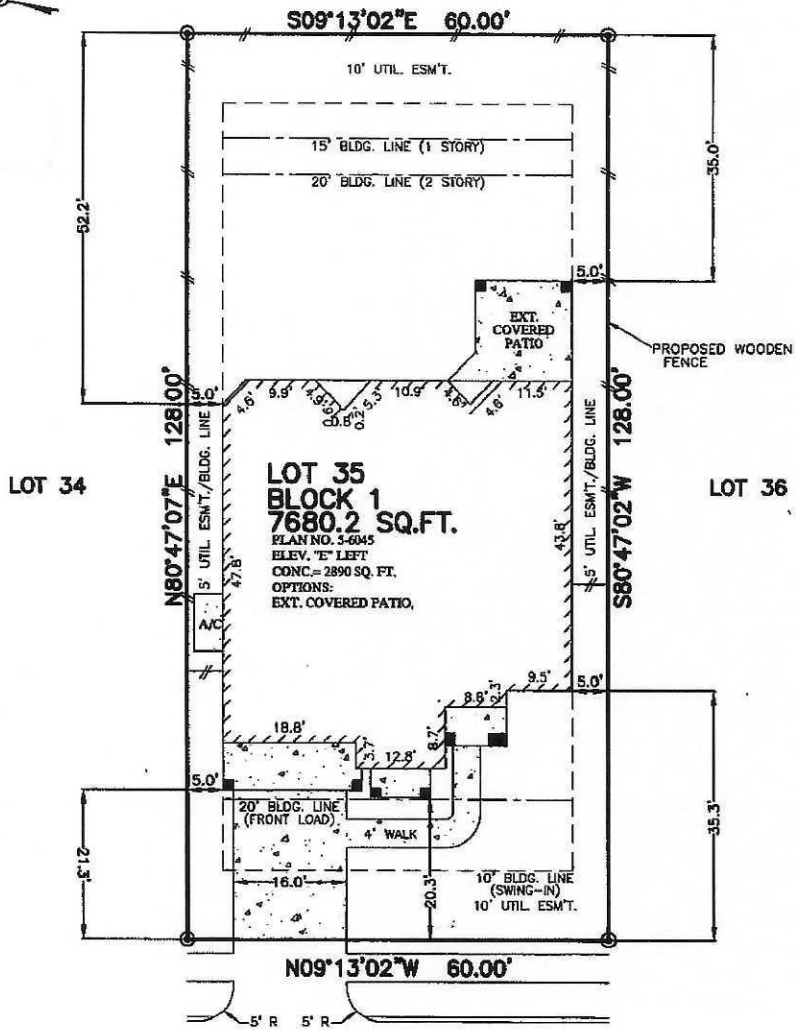


LEGEND			ELECTRIC			TELEPHONE			PAD MOUNTED TRANSFORMER		
—	WROUGHT IRON FENCE	—	—	WATER	⊕	⊕	⊕	⊕	⊕	⊕	⊕
—	CHAIN LINK FENCE	—	—	CABLE	⊕	⊕	⊕	⊕	⊕	⊕	⊕
—	OVERHEAD ELECTRIC	—	—	PEDESTAL	⊕	⊕	⊕	⊕	⊕	⊕	⊕
---	PROPERTY LINE	---	---	WATER	⊕	⊕	⊕	⊕	⊕	⊕	⊕
---	BUILDING LINE	---	---	METER	⊕	⊕	⊕	⊕	⊕	⊕	⊕
---	BUILDING LINE	---	---	VALVE	⊕	⊕	⊕	⊕	⊕	⊕	⊕
---	UTILITY EASEMENT	---	---	ANCHOR	⊕	⊕	⊕	⊕	⊕	⊕	⊕
---	EASEMENT	---	---	POLE	⊕	⊕	⊕	⊕	⊕	⊕	⊕
---	W.L.E. WATER LINE EASEMENT	---	---	PROPERTY CORNER	⊕	⊕	⊕	⊕	⊕	⊕	⊕
---		---	---	GUY ANCHOR	⊕	⊕	⊕	⊕	⊕	⊕	⊕
---		---	---	POWER POLE	⊕	⊕	⊕	⊕	⊕	⊕	⊕
---		---	---		⊕	⊕	⊕	⊕	⊕	⊕	⊕

OPEN SPACE/DRAINAGE/UTILITIES



118 CLIFTONS CURVE WAY
(50' R.O.W.)
28' CONCRETE PAVEMENT

DRIVEWAY	341 SQ. FT.
IN-TURN	196 SQ. FT.
LEAD WALK	113 SQ. FT.
CITY WALK	176 SQ. FT.
PATIO	60 SQ. FT.
A/C PAD	32 SQ. FT.
FLATWORK	858 SQ. FT.
FRONT SOD	172 SQ. YDS.
REAR SOD	340 SQ. YDS.
FENCE LINE	238 L.I.N. FT.
IMPERVIOUS LOT COVERAGE	43.96 %

PLOT PLAN
SCALE: 1 = 20'

- NOTES:
- ALL BEARINGS SHOWN HEREON ARE BASED ON THE RECORDED PLAT.
 - THIS PLOT PLAN WAS PREPARED WITHOUT BENEFIT OF A TITLE REPORT. THERE MAY BE EASEMENTS, BUILDING LINES & OTHER MATTERS OF RECORD NOT SHOWN HEREON. SURVEYOR OR ALLPOINTS SERVICES CORP. IS NOT LIABLE FOR ANY DAMAGES THAT MAY INCUR IN ANY EVENT THE BUILDER BUILDS ANY IMPROVEMENTS CLOSER THAN 5.0' OR WITHIN AN EASEMENT.

©2016, ALLPOINTS SERVICES CORP., ALL RIGHTS RESERVED

FOR: WESTIN HOMES
ADDRESS:
118 CLIFTONS CURVE WAY
ALLPOINTS JOB #: WS121248
G.F.: ARM
AJ



ALLPOINTS
SERVICES CORP
PHONE: 713-468-7707
T.B.F.L.S. NO. 10122600

LOT 35, BLOCK 1,
WOODFOREST, SECTION 57,
CAB. Z, SHEETS 3746-3749, MAP RECORDS,
MONTGOMERY COUNTY, TEXAS

ISSUE DATE: 8/29/2016
ISSUE DATE: 8/4/2016

