

5

# La Dolce Vita

*A comfortable coastal retreat with luxurious appointments.*



## Architectural Design

Sullivan, Stevens & Henry Building Designers  
713.464.0740

## Sales Information

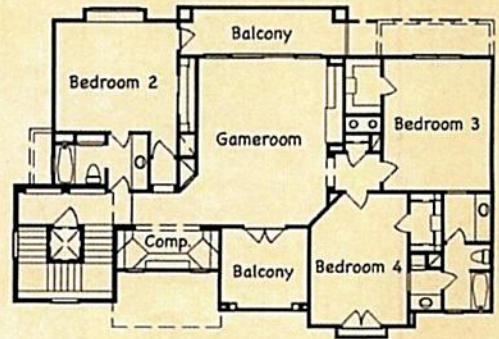
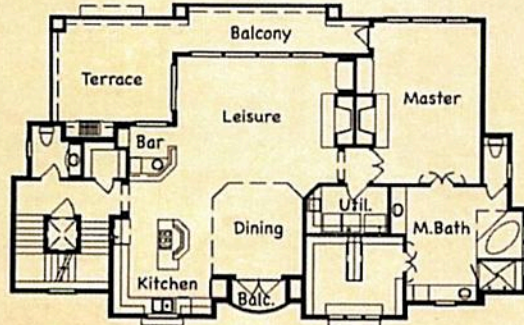
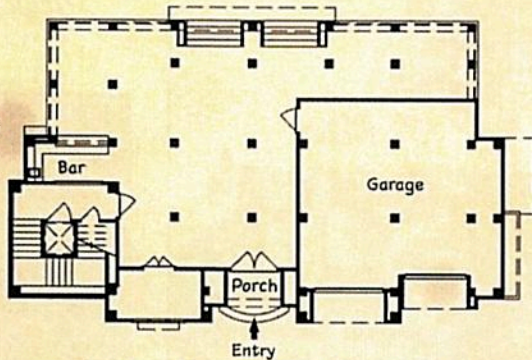
866.986.8586

## Square Footage\*

3,898 Heated/Air conditioned  
6,543 Under roof

## Sales Price\*

\$1,195,000.00



Floor plans ©Sullivan, Stevens & Henry

## Builder *Masterpiece Custom Homes 281.538.1000*

David Rompot and Gordon Boyle, with over 60 years of combined building experience in the Houston area, specialize in building in master-planned waterfront and golf course communities. A Masterpiece Custom home is distinguished by its spacious design, using the latest technology and efficiency for today's lifestyle. David and Gordon make no compromises when it comes to construction. Their homes follow

the latest construction and engineering techniques for a home of the highest quality. They work directly with the craftsman from architectural conception throughout the entire building process ensuring that their clients' desires are met to create a stylish, yet functional and comfortable home. Their approach to building and attention-to-detail has led to many years of success and many more contented homeowners.

## Interior Design *Laura Thompson Design Company 713.863.7760*

Laura Thompson Design Company is a boutique interior design service company focusing on high-end residential design. Services include construction finish specifications for new homes and remodel, as well as architectural review, program development and conceptual design.

The company is a complete resource for furniture, rugs, art, window coverings, and accessories. Whatever your style, from custom draperies to re-upholstery, they provide seemingly effortless solutions designing a unique and functional environment tailored to your individual taste.

---

## La Dolce Vita

Step into your own private Italian villa when you visit *La Dolce Vita*, a comfortable coastal retreat with an eclectic mix of architectural influences. As you pass through the set of custom designed iron gates that lead to the large dock-side living area, you can't help but notice the acid etch stained concrete flooring and intricate use of antique pavestones and native landscaping. The entrance, behind the first floor wet bar, leads to a three-story staircase that wraps around the elevator shaft. The stairs feature stained walnut wood treads with travertine risers.

Upon entering the main living area painted a warm copper hue with rich distressed walnut floors, the first eye-catching feature is the view through the wall-to-wall glass doors that overlook the Intracoastal Waterway.

The main architectural feature of the leisure room is a large cast stone fireplace and 42-inch flat screen television that can be rotated to accommodate views from any part of the room. The wet bar, across from the fireplace, showcases floor-to-ceiling wine storage. Glass mosaic tiles line the bar counter splash which complements the kitchen's granite slab counters and backsplash. State-of-the-art stainless steel appliances throughout brings the amenities of home to your beach house.

The second floor balcony leads to a large terrace decked in a patterned tumbled travertine tile and is completed with a summer kitchen and plenty of room to entertain.

Tucked away behind the leisure room is the spacious master suite. Painted a rich, deep caramel tone, the large bedroom features a beautiful honey colored onyx slab fireplace, picture

window and master bathroom with an expansive closet.

The master bathroom mixes materials of Jerusalem Gold limestone, onyx mosaics, decorative glass mosaic and North African granite slabs of gold antique. The bands of glass mosaic around the tub and shower walls are reflected by etching the design in the glass of the shower enclosure.

The third floor gallery opens to a game room and computer loft with cinnamon colored walls. This area is large enough to accommodate a billiards table or multimedia theater system. Flanking the game room are three secondary bedrooms, each sporting large windows with pleasing views. The color palate for these bedrooms includes sage green, terra cotta and latte tan.

Also located on the third floor is a sunset balcony, which opens to the west and allows for watching the sunset over the reserves surrounding Harborwalk.

Contemporary paintings and sculpture are on display throughout *La Dolce Vita*. Transitional Italian styled furniture rounds out this comfortable coastal retreat.