

Autumn Trails II

PETE & CATHY GARLAND LIVING TRUST
AGREEMENT NUMBER ONE (1)
PETE R. GARLAND and CATHY A. GARLAND, TRUSTEES
EXHIBIT D-TRACT 1 - Part of 818.822 Acres
Volume 1785, Page 186
Polk County Official Records

MACNOLIA CEMETERY ASSOC.
9.98 ACRES
CALLED 5,000 ACRES
VOL. 459, PG. 464
POLK COUNTY
DEED RECORDS

CALLED 5,000 ACRES
VOL. 263, PG. 263
POLK COUNTY
DEED RECORDS

I. & G. N. R. R. SURVEY, A-688

SOUTHEAST CC
LEONARD HC
SURVEY, A

SURVEY, A-43

FUTURE DEVELOPMENT
ON ALASKA
LOOP

GULF PIPELINE COMPANY EAST

RE DEVELOPMENT

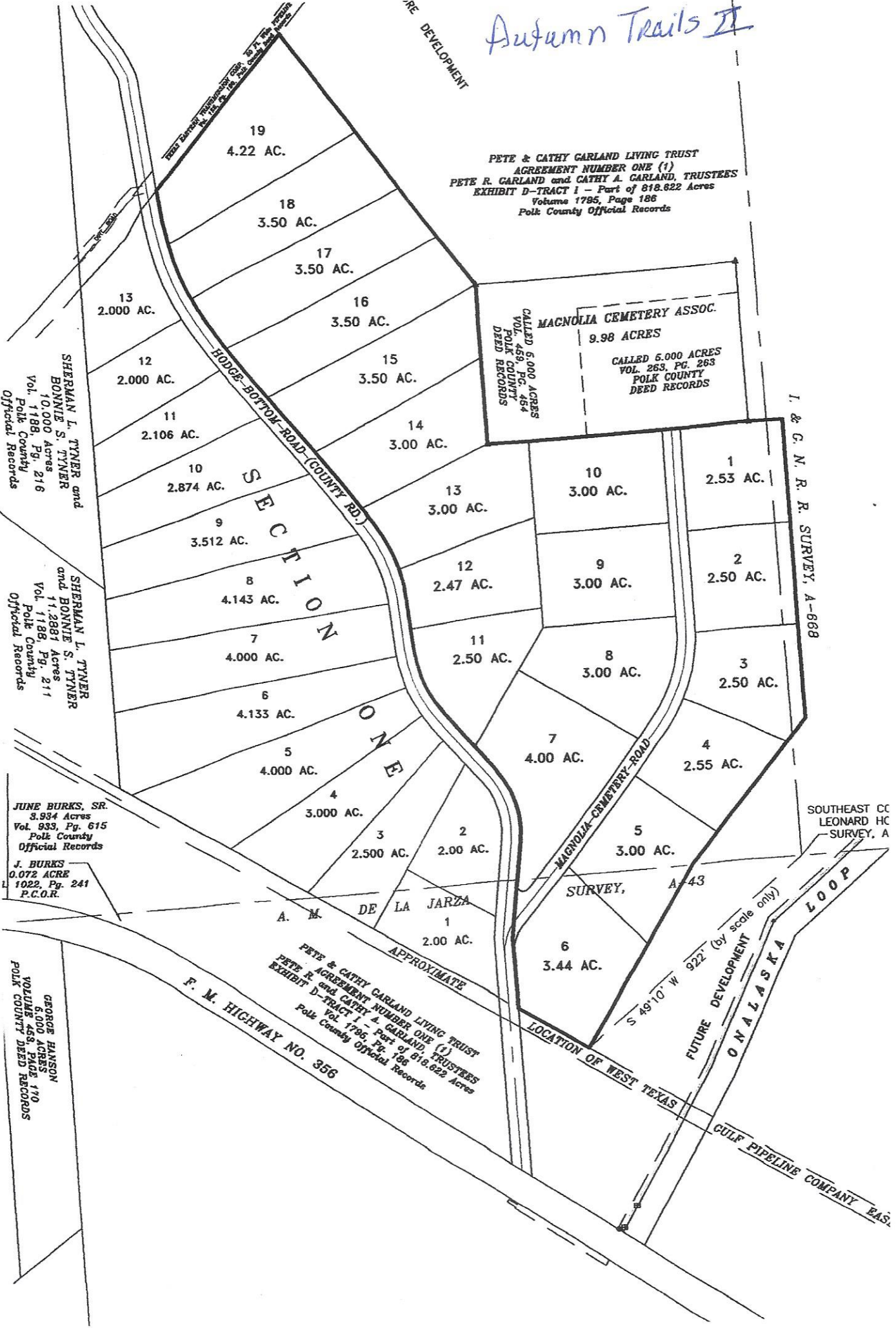
SECTION ONE

F. M. HIGHWAY NO. 356

PETE & CATHY GARLAND LIVING TRUST
AGREEMENT NUMBER ONE (1)
PETE R. GARLAND and CATHY A. GARLAND, TRUSTEES
EXHIBIT D-TRACT 1 - Part of 818.822 Acres
Vol. 1785, Page 186
Polk County Official Records

LOCATION OF WEST TEXAS

S 49°10' W 922' (by scale only)



- 19 4.22 AC.
- 18 3.50 AC.
- 17 3.50 AC.
- 16 3.50 AC.
- 15 3.50 AC.
- 14 3.00 AC.
- 13 2.00 AC.
- 12 2.00 AC.
- 11 2.106 AC.
- 10 2.874 AC.
- 9 3.512 AC.
- 8 4.143 AC.
- 7 4.000 AC.
- 6 4.133 AC.
- 5 4.000 AC.
- 4 3.000 AC.
- 3 2.500 AC.
- 2 2.00 AC.
- 1 2.53 AC.
- 10 3.00 AC.
- 9 3.00 AC.
- 8 3.00 AC.
- 7 4.00 AC.
- 6 3.44 AC.
- 5 3.00 AC.
- 4 2.55 AC.
- 3 2.50 AC.
- 2 2.50 AC.
- 1 2.50 AC.

SHERMAN L. TYNER and
BONNIE S. TYNER
10,000 Acres
Vol. 1188, Pg. 216
Polk County
Official Records

SHERMAN L. TYNER
and BONNIE S. TYNER
11,288.1 Acres
Vol. 1188, Pg. 211
Polk County
Official Records

JUNE BURKS, SR.
3,934 Acres
Vol. 933, Pg. 615
Polk County
Official Records

J. BURKS
0.072 ACRE
1022, Pg. 241
P.C.O.R.

GEORGE HANSON
5,000 ACRES
VOLUME 458, PAGE 110
POLK COUNTY DEED RECORDS