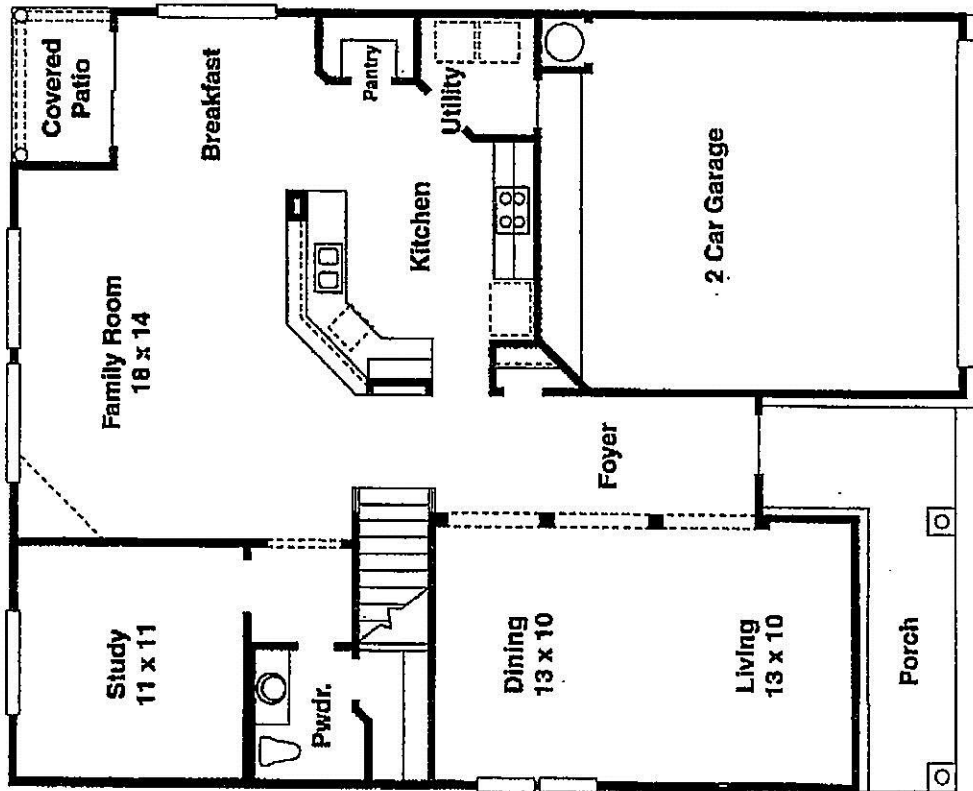
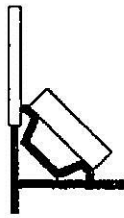
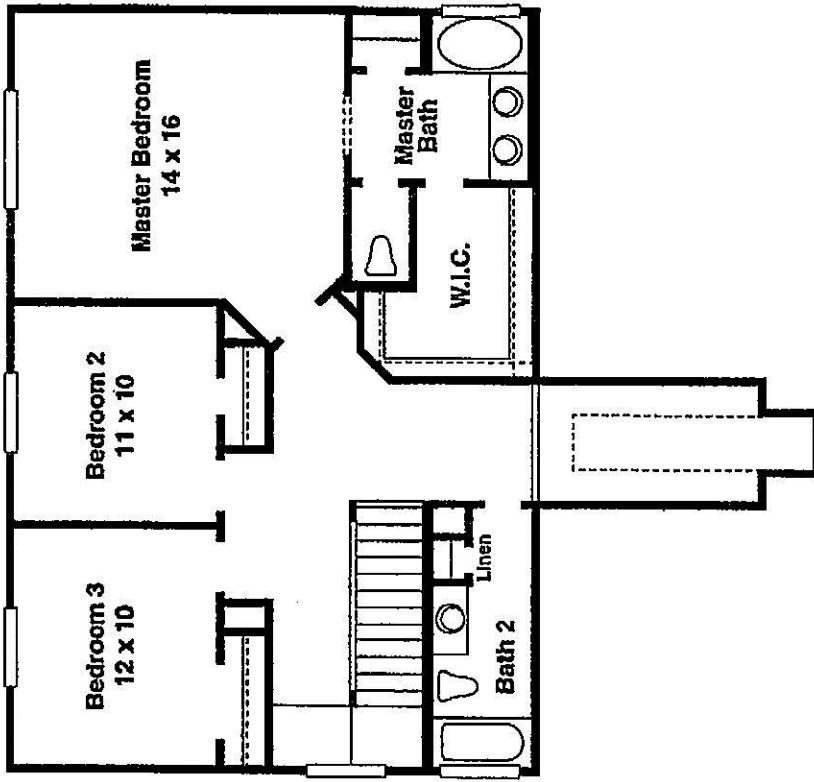


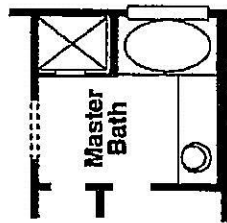
# THE SAUTERNE



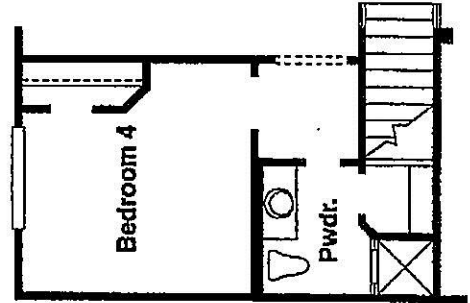
- Gourmet kitchen open to spacious family room and breakfast nook
- Private Study
- Arched entry into dining and living rooms
- Upstairs master suite with luxurious bath & walk-in closet
- Ample secondary bedrooms
- Functional utility room with washer and dryer included



Optional Fireplace

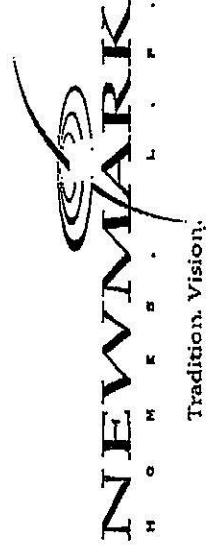


Optional Shower



Optional Bedroom 4

Approximately 2,302 Square Feet  
3 Bedroom / 2 1/2 Bath / Family Room /  
Study / Dining and Living Room



www.newmarkhomes.com  
1-800-840-2700