



Foundation Repair of Texas

3911 Newcomen Dr. Houston

CORPORATE SERVICE CENTER

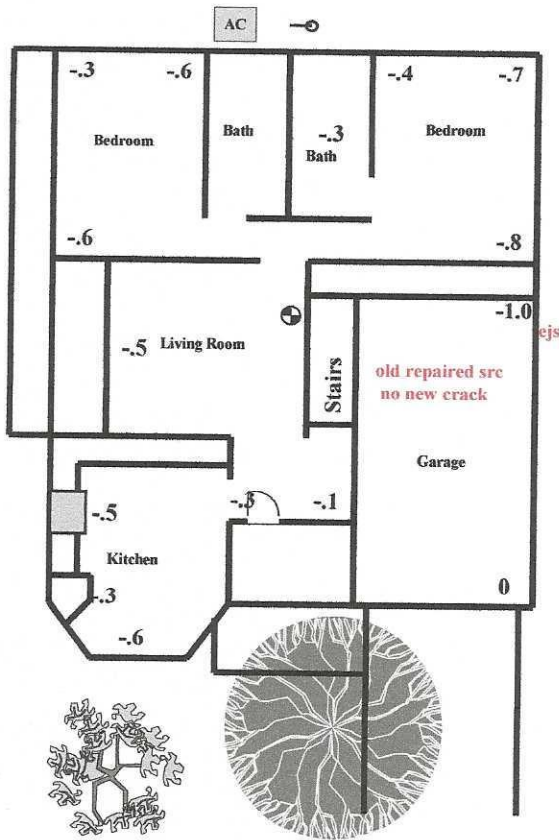
2821 E Randol Mill Rd, Arlington, TX 76011

Main 214.637.1444 Fax 214.637.0440

Toll Free 1.877.840.9993

WWW.PERMAPIER.COM

1983



The home is within engineering tolerance limits, and appears to be stable with minimal stress. Recommend resealing expansion joint with new epoxy.

Evaluator: Stephen Gregory
 (682) 718-3818

Inspection Notes:

- Excessive Cosmetic Stress
- Walk-ability Issue
- Structural Concern

Plan of Repair

- Concrete Pressed Pilings
- Exterior Concrete Breakouts
- Interior Concrete Breakouts

Legend

- ⊕ Elevation Reference
- ⊗ Concrete Pressed Pilings
- ⊗ Exterior Concrete Breakout
- ⊗ Interior Concrete Breakout
- ⊙ Existing Piers
- ⊖ Plumbing Clean-out
- CI Cast Iron Clean-out Type
- PVC PVC Clean-out Type
- GBC Grade Beam Crack
- SRC Sheet Rock Crack
- FC Floor Crack
- S Separation
- TS Trim Separation
- FS Facia Separation
- WI Walk-ability Issue
- VBC Vertical Brick Crack
- HBC Horizontal Brick Crack
- SS Stair Step Brick Crack
- WS Window Separation
- EJS Expansion Joint Separation