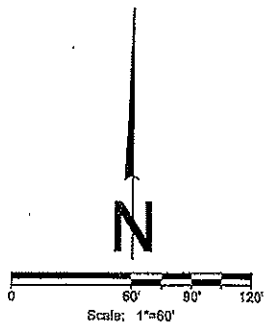
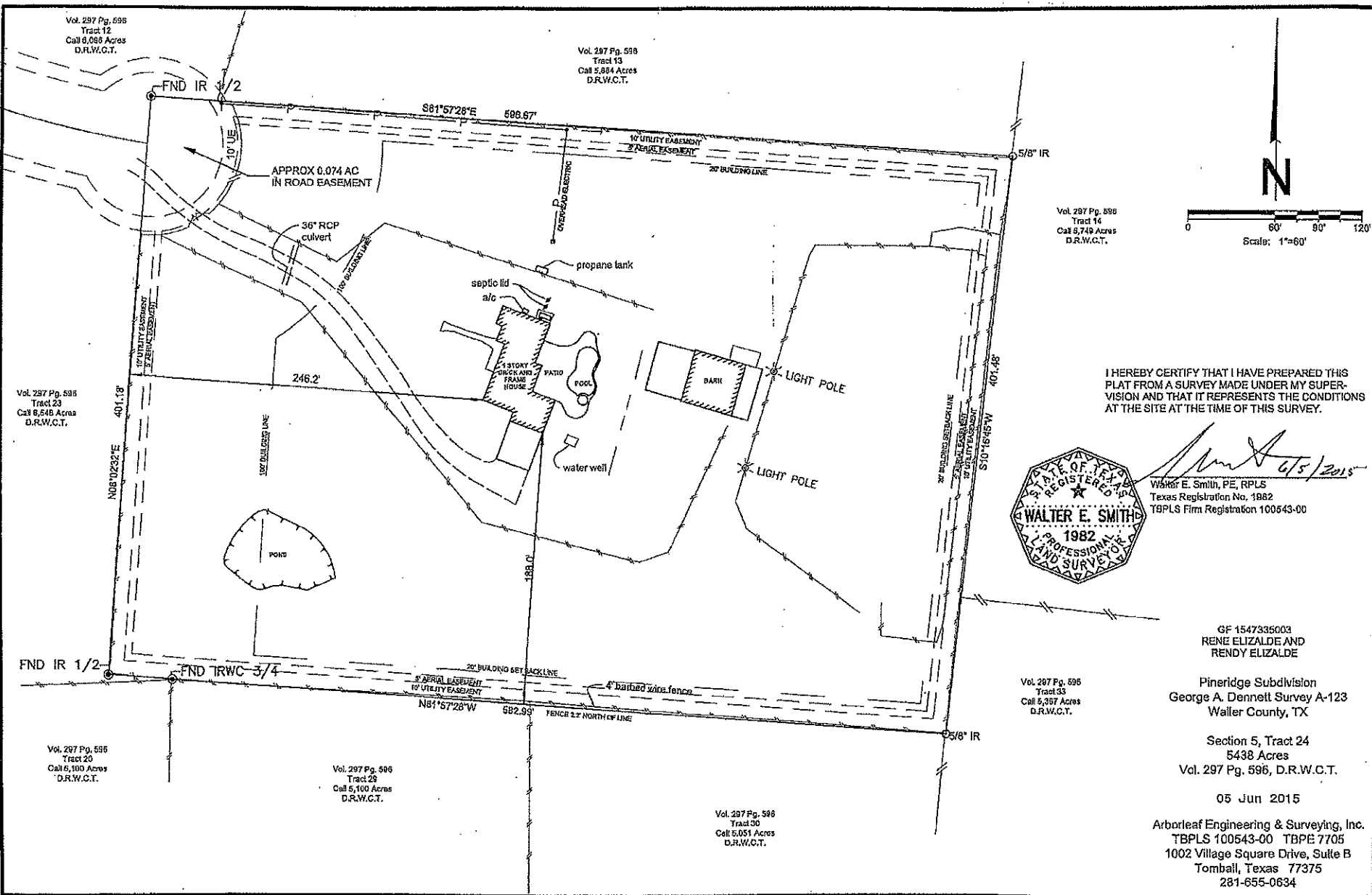


[06-05-2015 8:27 PM] P:\Users\Jacob.hart\Wes.dwg



I HEREBY CERTIFY THAT I HAVE PREPARED THIS PLAT FROM A SURVEY MADE UNDER MY SUPERVISION AND THAT IT REPRESENTS THE CONDITIONS AT THE SITE AT THE TIME OF THIS SURVEY.



*Walter E. Smith*  
6/5/2015

Walter E. Smith, PE, RPLS  
Texas Registration No. 1982  
TGPLS Firm Registration 100543-00

GF 1547335003  
RENE ELIZALDE AND  
RENDY ELIZALDE  
  
Pineridge Subdivision  
George A. Dennett Survey A-123  
Waller County, TX

Section 5, Tract 24  
5438 Acres  
Vol. 297 Pg. 596, D.R.W.C.T.

05 Jun 2015

Arborleaf Engineering & Surveying, Inc.  
TBPLS 100543-00 TBPE 7705  
1002 Village Square Drive, Suite B  
Tomball, Texas 77375  
281-655-0634

Vol. 297 Pg. 596  
Tract 12  
Call 6,088 Acres  
D.R.W.C.T.

Vol. 297 Pg. 598  
Tract 13  
Call 5,884 Acres  
D.R.W.C.T.

Vol. 297 Pg. 599  
Tract 14  
Call 5,749 Acres  
D.R.W.C.T.

Vol. 297 Pg. 595  
Tract 23  
Call 6,545 Acres  
D.R.W.C.T.

Vol. 297 Pg. 596  
Tract 20  
Call 6,100 Acres  
D.R.W.C.T.

Vol. 297 Pg. 596  
Tract 29  
Call 5,100 Acres  
D.R.W.C.T.

Vol. 297 Pg. 598  
Tract 30  
Call 5,051 Acres  
D.R.W.C.T.