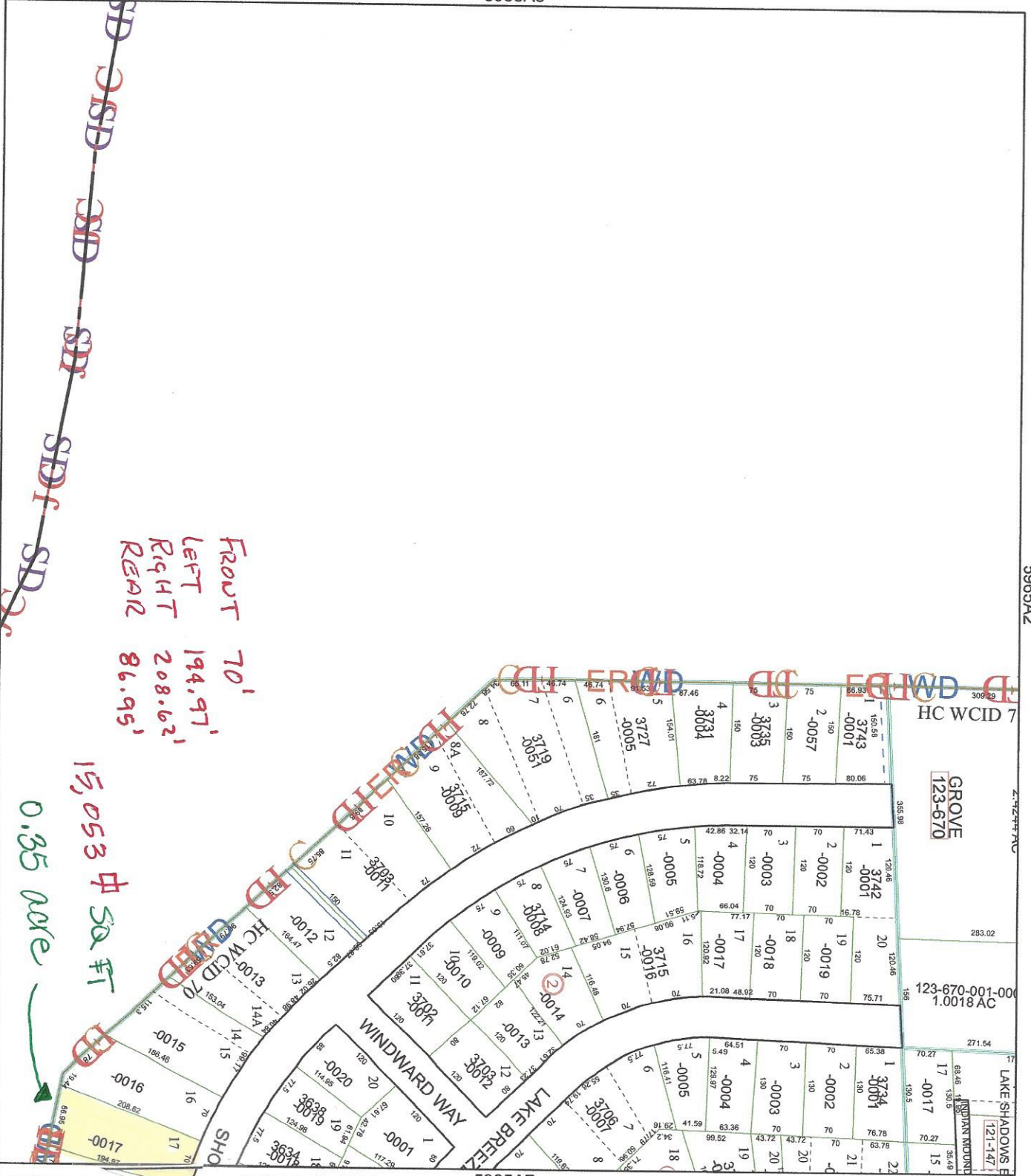


FRONT 70'
 LEFT 194.97'
 RIGHT 208.62'
 REAR 86.95'

15,053 sq FT
 0.35 acre



5965A7

0 100 200
 PUBLICATION DATE:
 5/9/2017



Harris County Appraisal District



Geospatial or map data maintained by the Harris County Appraisal District is for informational purposes and may not have been prepared for or be suitable for legal, engineering, or surveying purposes. It does not represent an on-the-ground survey and only represents the approximate location of property boundaries.

MAP LOCATION



FACET 5965A

1	2	3	4
5	6	7	8
9	10	11	12