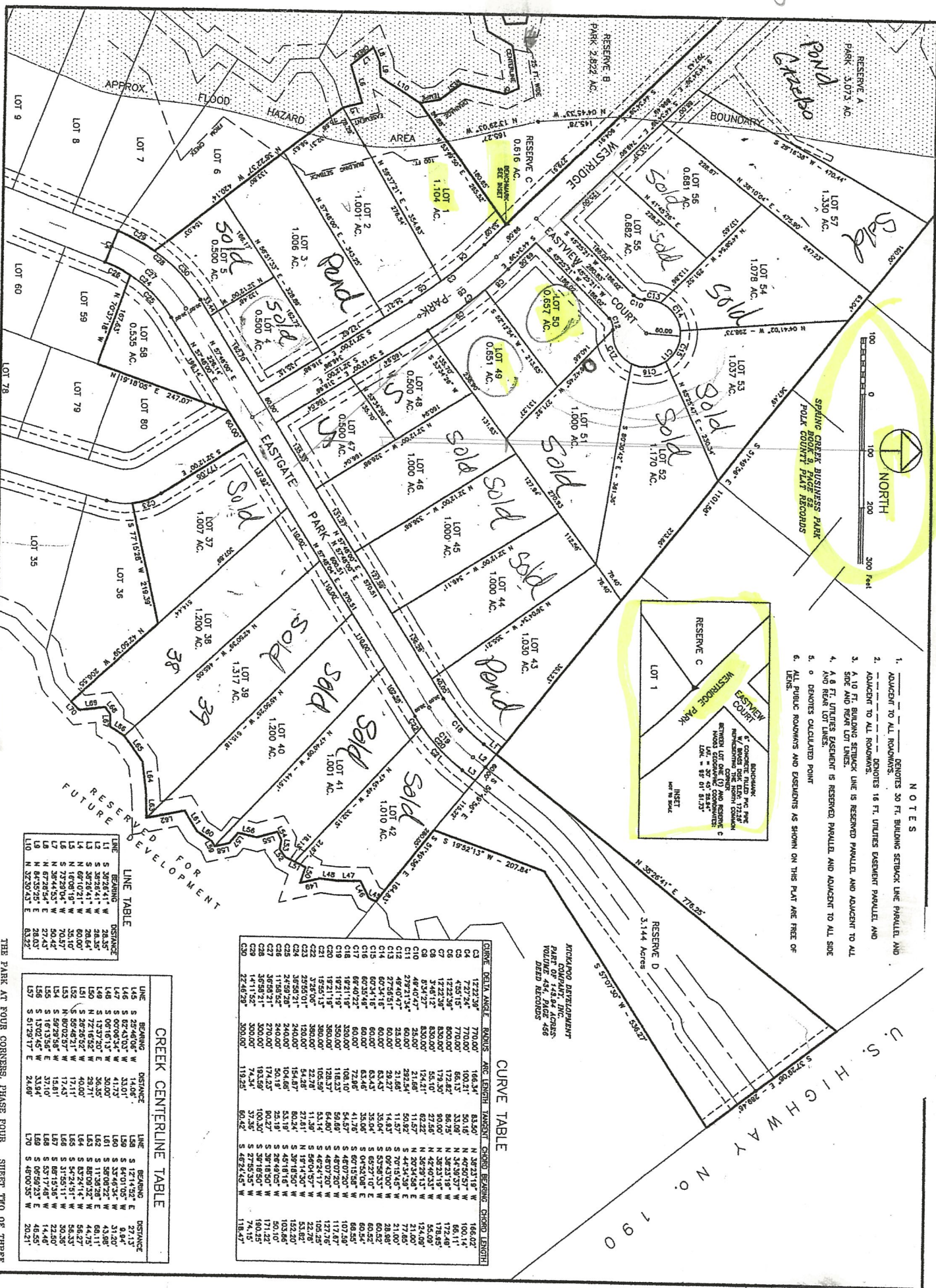
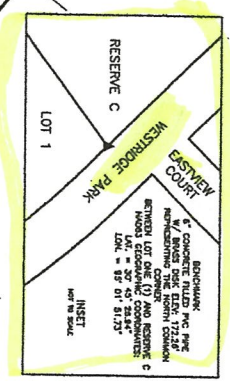


153



- NOTES**
1. ADJACENT TO ALL ROWWAYS: DENOTES 30 FT. BUILDING SETBACK LINE PARALLEL AND ADJACENT TO ALL ROWWAYS.
 2. ADJACENT TO ALL ROWWAYS: DENOTES 18 FT. UTILITIES EASEMENT PARALLEL AND ADJACENT TO ALL ROWWAYS.
 3. A 10 FT. BUILDING SETBACK LINE IS RESERVED PARALLEL AND ADJACENT TO ALL SIDE AND REAR LOT LINES.
 4. A 6 FT. UTILITIES EASEMENT IS RESERVED PARALLEL AND ADJACENT TO ALL SIDE AND REAR LOT LINES.
 5. 0 DENOTES CALCULATED POINT.
 6. ALL PUBLIC ROWWAYS AND EASEMENTS AS SHOWN ON THIS PLAN ARE FREE OF DUES.

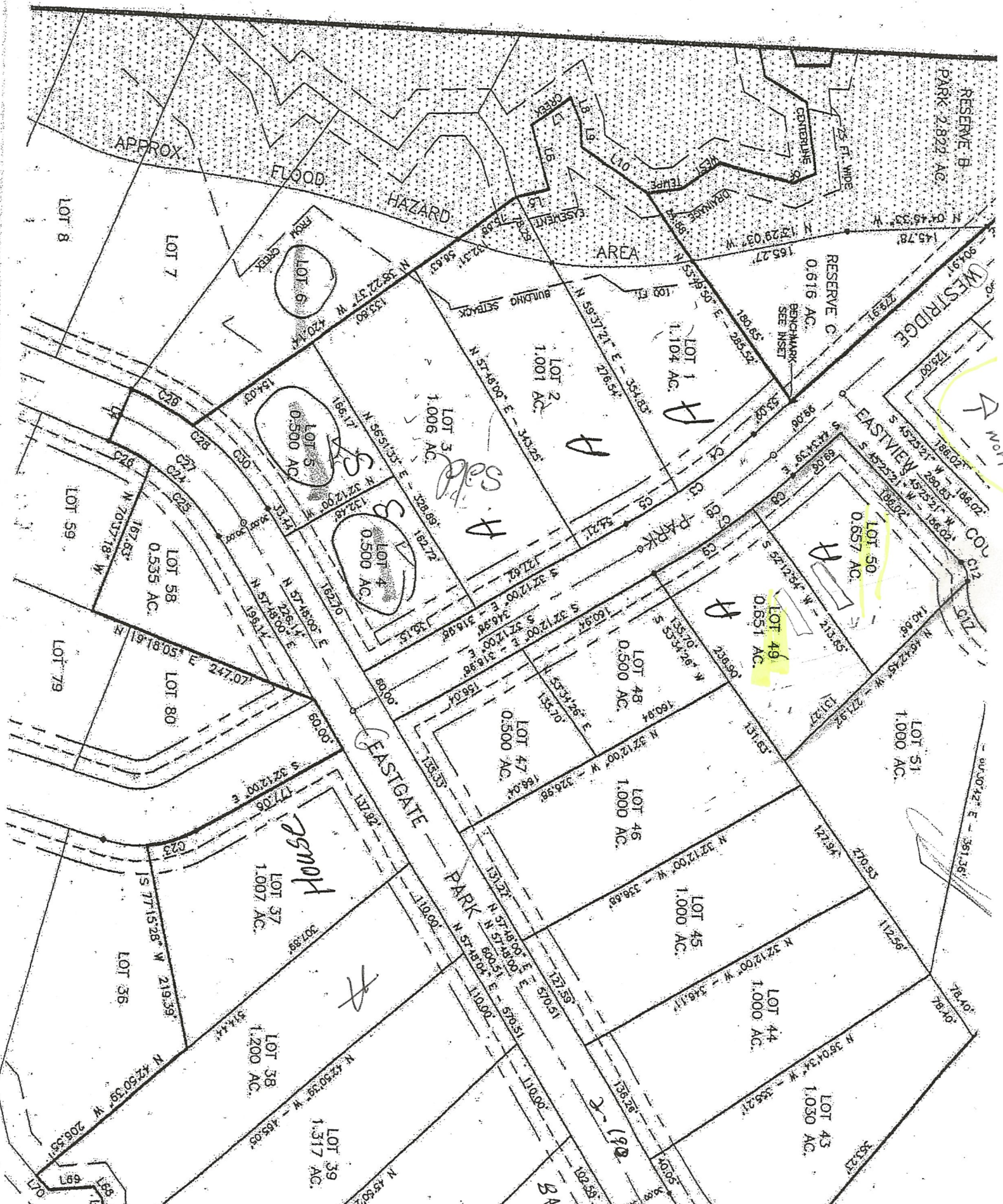


CURVE TABLE

CHORD BEARING	CHORD LENGTH	ARC LENGTH	ANGLE	BEARING	ANGLE	BEARING	CHORD BEARING	CHORD LENGTH
C1	1222.33'	770.00'	166.34'	83.50'	N 89°31'54" W	106.02'		
C2	727.24'	770.00'	100.21'	50.16'	N 47°07'57" W	106.11'		
C3	475.15'	770.00'	66.13'	33.08'	N 34°39'57" W	66.11'		
C4	1222.33'	770.00'	166.34'	83.50'	N 89°31'54" W	106.02'		
C5	1222.33'	770.00'	166.34'	83.50'	N 89°31'54" W	106.02'		
C6	1222.33'	770.00'	166.34'	83.50'	N 89°31'54" W	106.02'		
C7	1222.33'	770.00'	166.34'	83.50'	N 89°31'54" W	106.02'		
C8	1222.33'	770.00'	166.34'	83.50'	N 89°31'54" W	106.02'		
C9	1222.33'	770.00'	166.34'	83.50'	N 89°31'54" W	106.02'		
C10	1222.33'	770.00'	166.34'	83.50'	N 89°31'54" W	106.02'		
C11	1222.33'	770.00'	166.34'	83.50'	N 89°31'54" W	106.02'		
C12	1222.33'	770.00'	166.34'	83.50'	N 89°31'54" W	106.02'		
C13	1222.33'	770.00'	166.34'	83.50'	N 89°31'54" W	106.02'		
C14	1222.33'	770.00'	166.34'	83.50'	N 89°31'54" W	106.02'		
C15	1222.33'	770.00'	166.34'	83.50'	N 89°31'54" W	106.02'		
C16	1222.33'	770.00'	166.34'	83.50'	N 89°31'54" W	106.02'		
C17	1222.33'	770.00'	166.34'	83.50'	N 89°31'54" W	106.02'		
C18	1222.33'	770.00'	166.34'	83.50'	N 89°31'54" W	106.02'		
C19	1222.33'	770.00'	166.34'	83.50'	N 89°31'54" W	106.02'		
C20	1222.33'	770.00'	166.34'	83.50'	N 89°31'54" W	106.02'		
C21	1222.33'	770.00'	166.34'	83.50'	N 89°31'54" W	106.02'		
C22	1222.33'	770.00'	166.34'	83.50'	N 89°31'54" W	106.02'		
C23	1222.33'	770.00'	166.34'	83.50'	N 89°31'54" W	106.02'		
C24	1222.33'	770.00'	166.34'	83.50'	N 89°31'54" W	106.02'		
C25	1222.33'	770.00'	166.34'	83.50'	N 89°31'54" W	106.02'		
C26	1222.33'	770.00'	166.34'	83.50'	N 89°31'54" W	106.02'		
C27	1222.33'	770.00'	166.34'	83.50'	N 89°31'54" W	106.02'		
C28	1222.33'	770.00'	166.34'	83.50'	N 89°31'54" W	106.02'		
C29	1222.33'	770.00'	166.34'	83.50'	N 89°31'54" W	106.02'		
C30	1222.33'	770.00'	166.34'	83.50'	N 89°31'54" W	106.02'		

CREEK CENTERLINE TABLE

LINE	BEARING	DISTANCE	LINE	BEARING	DISTANCE
L45	S 25°46'06" W	140.65'	L56	S 12°14'32" E	271.13'
L46	S 62°43'03" W	33.01'	L57	S 64°01'05" W	9.64'
L47	S 06°16'13" W	30.00'	L58	S 58°09'22" W	12.26'
L48	S 13°37'30" E	38.35'	L59	S 11°39'28" E	68.11'
L49	N 72°16'52" W	28.71'	L60	S 48°09'32" W	44.75'
L50	N 69°10'21" W	78.64'	L61	S 82°24'14" W	58.23'
L51	N 16°08'19" W	36.16'	L62	S 52°24'14" W	58.23'
L52	N 80°26'52" W	40.00'	L63	S 52°24'14" W	58.23'
L53	N 80°26'52" W	40.00'	L64	S 52°24'14" W	58.23'
L54	N 80°26'52" W	40.00'	L65	S 52°24'14" W	58.23'
L55	N 80°26'52" W	40.00'	L66	S 52°24'14" W	58.23'
L56	N 80°26'52" W	40.00'	L67	S 52°24'14" W	58.23'
L57	N 80°26'52" W	40.00'	L68	S 52°24'14" W	58.23'
L58	N 80°26'52" W	40.00'	L69	S 52°24'14" W	58.23'
L59	N 80°26'52" W	40.00'	L70	S 52°24'14" W	58.23'
L60	N 80°26'52" W	40.00'	L71	S 52°24'14" W	58.23'



APPROX

FLOOD

HAZARD

AREA

RESERVE B
2.822 AC

RESERVE C
0.616 AC
BENCHMARK
SEE INSET

WESTRIDGE

LOT 50
0.857 AC

LOT 49
0.851 AC

LOT 3
1.006 AC

LOT 2
1.001 AC

LOT 1
1.104 AC

LOT 4
0.500 AC

LOT 5
0.500 AC

LOT 58
0.535 AC

LOT 47
0.500 AC

LOT 48
0.500 AC

LOT 51
1.000 AC

LOT 46
1.000 AC

LOT 45
1.000 AC

LOT 44
1.000 AC

LOT 43
1.030 AC

LOT 37
1.007 AC

LOT 38
1.200 AC

LOT 39
1.317 AC

HOUSE

EASTGATE PARK

EASTGATE

PARK

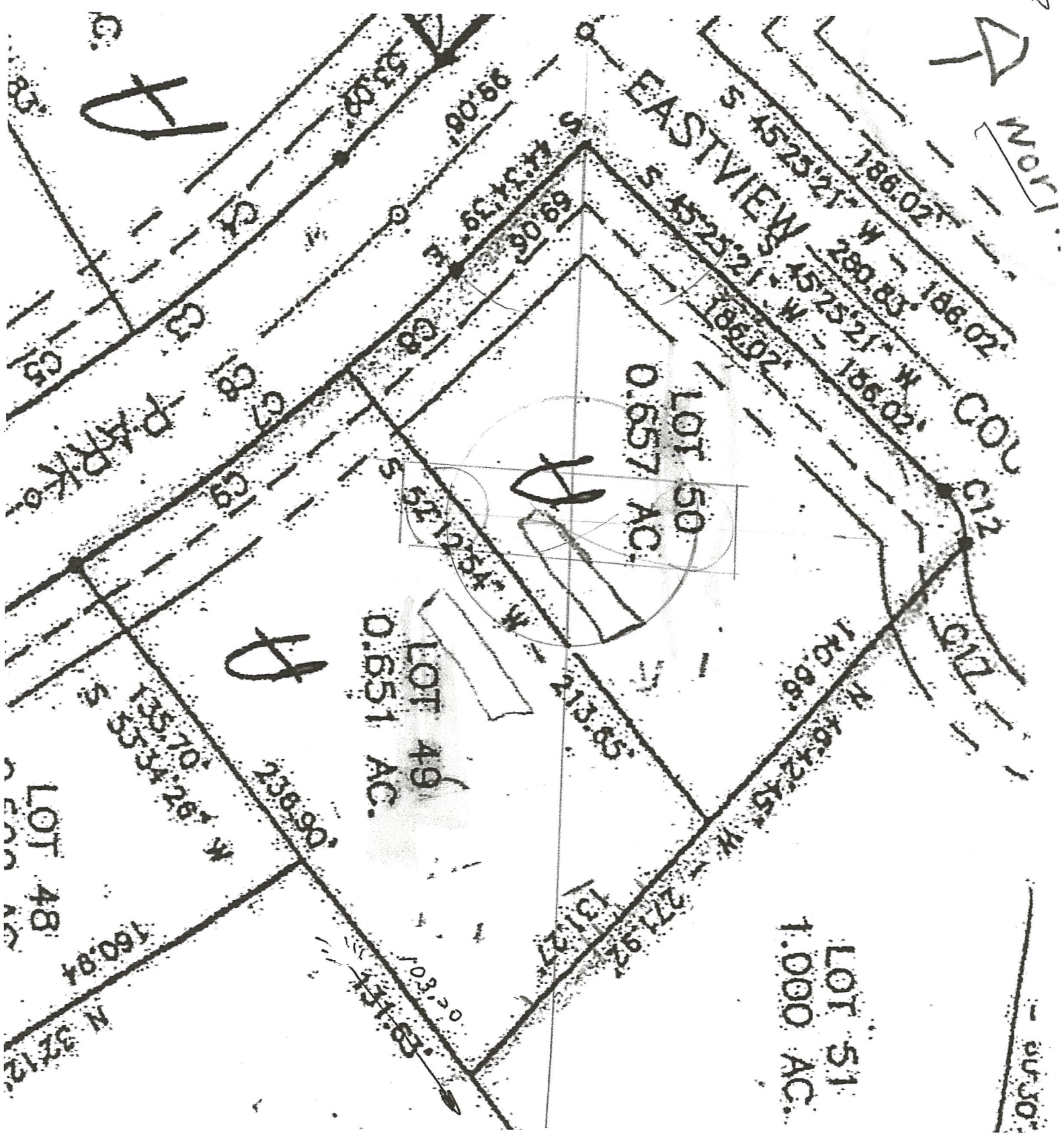
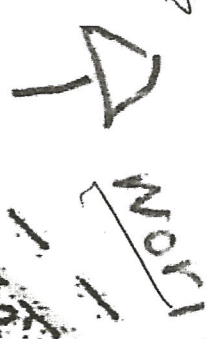
North Arrow

S.A.

S.W.

S.A.

FROM



A

A

A

LOT 50
0.657 AC.

LOT 49
0.651 AC.

LOT 51
1.000 AC.

LOT 48

TO