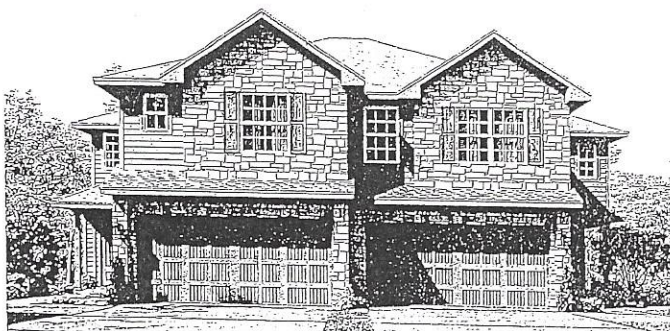
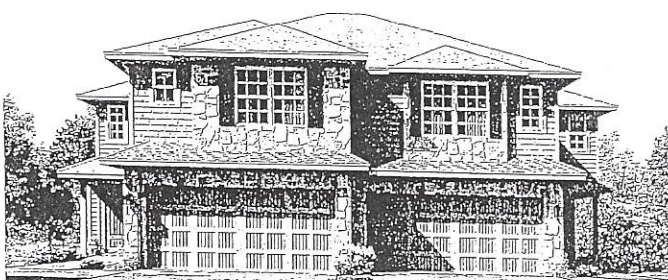


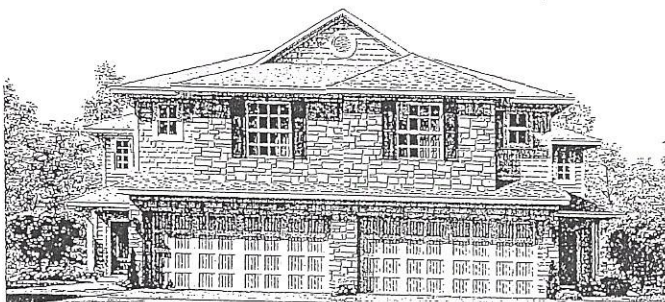
## Laurel



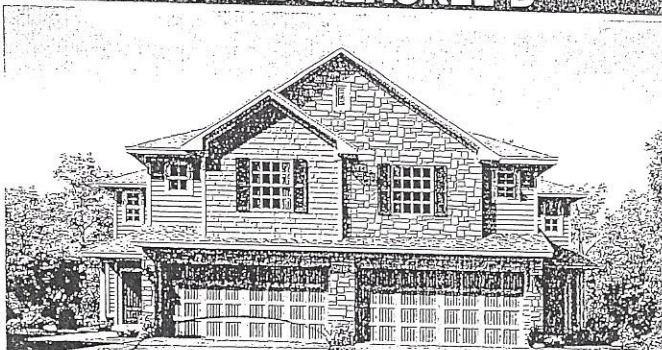
**LAUREL-A/MIMOSA-A**



**LAUREL-B/MIMOSA-B**



**LAUREL-C/LAUREL-D**



**LAUREL-E/LAUREL-F**

*Am Jari Rault*  
5/6/16

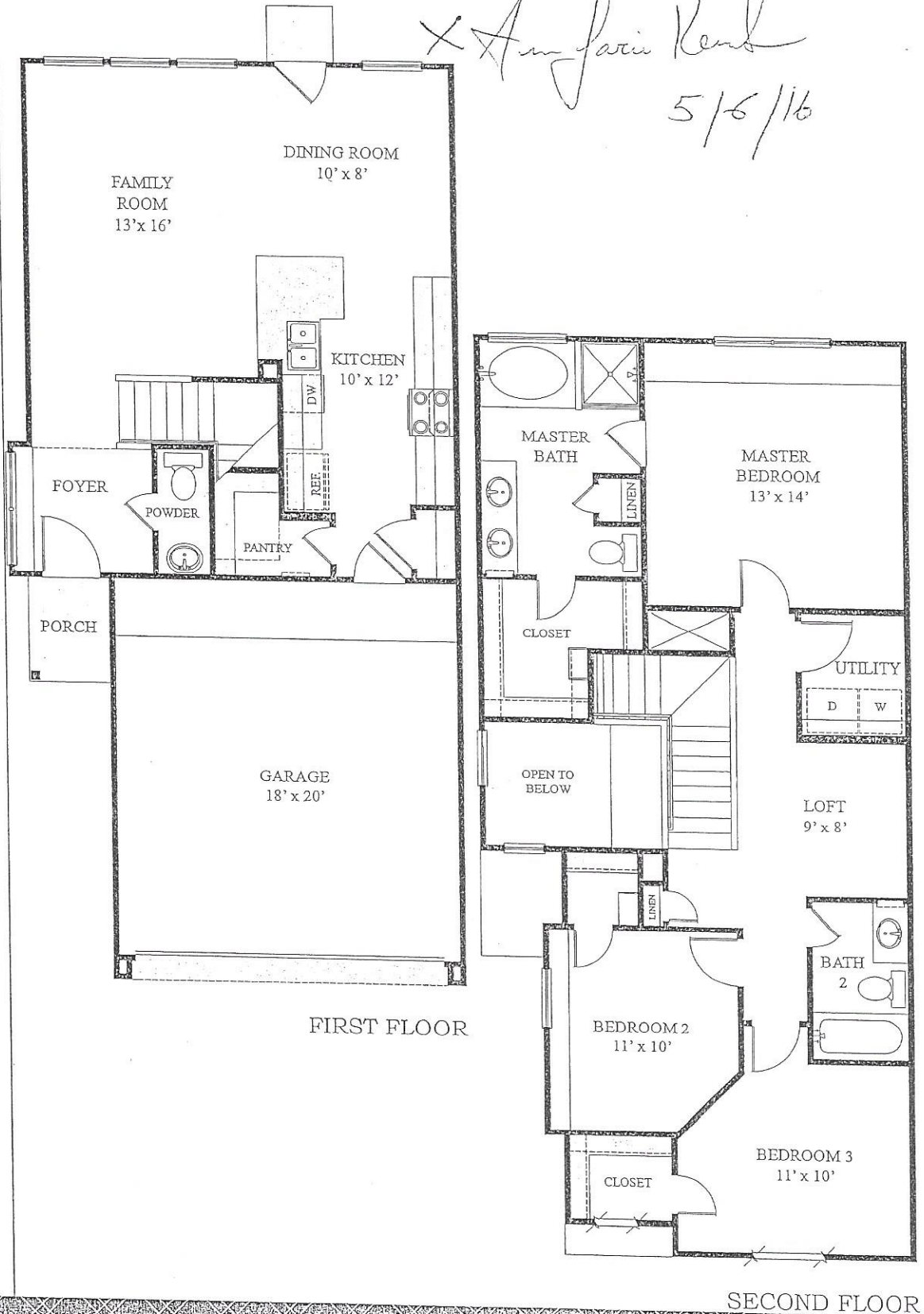


Plan 2257

- 3 Bedrooms
- 2.5 Bathrooms
- 2 Car Garage
- 1,559 Sq. Ft.

Laurel

*X Am Jatin Rendi*  
*5/6/16*



EVERYTHING'S INCLUDED™



**EVERYTHING'S  
INCLUDED**

# Stone Twin Villa Included Features

## ATTRACTIVE INTERIORS:

- Durable and Attractive Hard Surface Flooring in Foyer, Family Room and Dining Room, per plan
- Satin Nickel Door Hardware
- Shed Resistant, Continuous Filament Carpet with Stainguard
- 1/2 -Inch, 6-Pound Nominal Carpet Pad
- 5-Blade Ceiling Fan with Light Kit in Master Bedroom, and Family Room
- Block for Ceiling Fan in all Secondary Bedrooms
- Divided Lite Windows to Complement Front Elevations
- 2" Faux Wood Blinds on All Operable Windows
- Rounded Drywall Corners Throughout Home (excludes window returns)
- Monterrey Drag Textured Walls and Ceilings
- Raised Panel Interior Doors Throughout Home
- Designer Light Fixtures Throughout Home
- Decora Rocker Switches Throughout Home
- Security System with Motion Detector, Keypad and Sensors at First Floor Windows and Exterior Doors
- Designer Two-Toned Paint Package
- LED Lighting Throughout Home

## EXTERIOR DESIGN & CONSTRUCTION FEATURES

- Eye-Catching Exterior Elevation with Architectural Detailing
- Weatherproof Fiber-Cement Siding with 30 Year Warranty
- Landscape package with Backyard Fencing, per community guide-lines
- Full Sod in Front and Rear Yards
- Fully Automatic Irrigation System
- Front Elevation Gutters
- Stylish Energy Efficient Front Door
- Half Lite Back Patio Door with Built-In Mini-Blind
- Designer Coach Light, per plan
- Hose Bibbs at Front and Rear of Home
- Masonry Address Block
- Deadbolt Locks on Exterior Doors, where applicable
- Weatherproof Exterior Outlets at Front and Rear of Home
- Design Enhanced Over-Head Garage Door with Opener and 2 Remotes
- 3000 PSI Post-Tension Foundation Certified by an Independent Engineer
- Engineered Subfloor Framing System on Two-Story Homes
- 3/4-Inch Tongue and Groove Subflooring Secured with Screws and Adhesive on Two Story Homes

X *Amelia Perez*  
5/6/16

## ENGAGING KITCHEN FEATURES

- Cutting Edge Stainless Steel Appliance Package:
  - Fully Integrated Dishwasher
  - 30" Free Standing Self-Cleaning Gas Range
  - Microwave with Soft-Touch Panel
  - 21 Cubic Feet Refrigerator with Ice Maker
- Durable and Attractive Hard Surface Flooring in Kitchen and Breakfast Area
- 36" Designer Cabinets with Crown Moulding
- Granite Countertops with Straight Edge
- Tumbled Stone Backsplash
- Dual Basin Stainless Steel Sink
- Chrome Finished Faucet with Pull Out Spray Nozzle
- Insulated Garbage Disposal
- Recessed LED Lighting, per plan
- Electric and Gas Connections at Range, per Community

Prices are non-negotiable

Continued on Back