



MOY STREET PARK



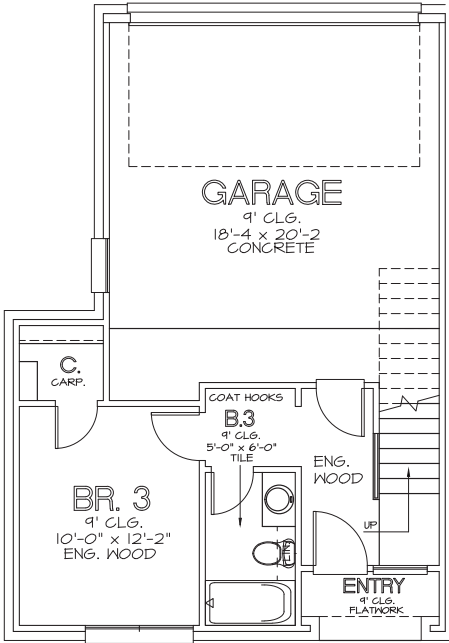
CHOICE IS THE ULTIMATE LUXURY



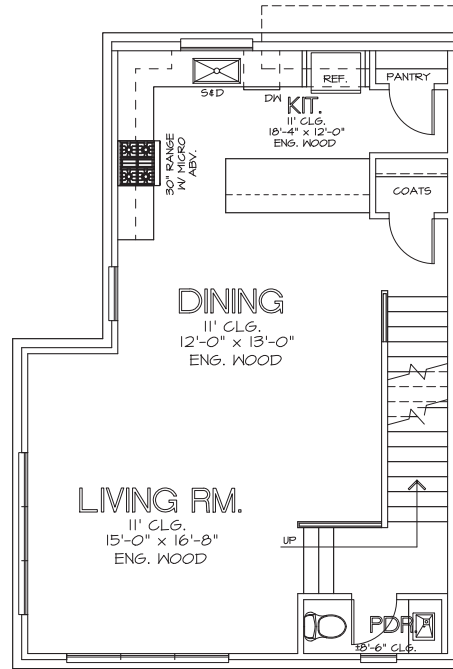


CITY HOMES CHOICE

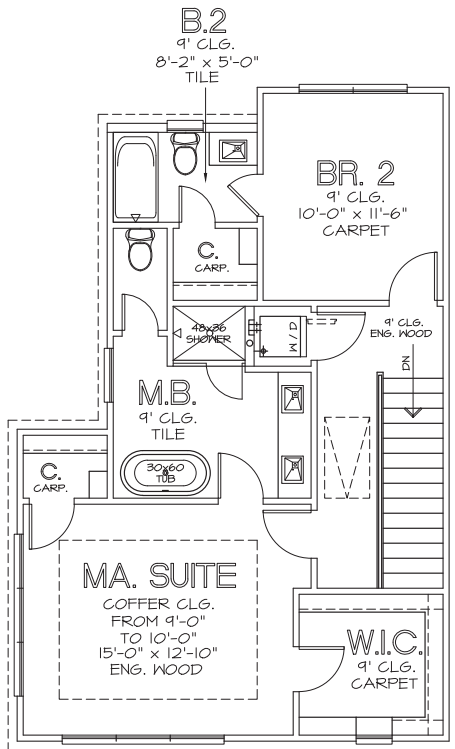
MOY STREET PARK THE MOY - 1,776 SQ. FT.



FIRST FLOOR



SECOND FLOOR



THIRD FLOOR



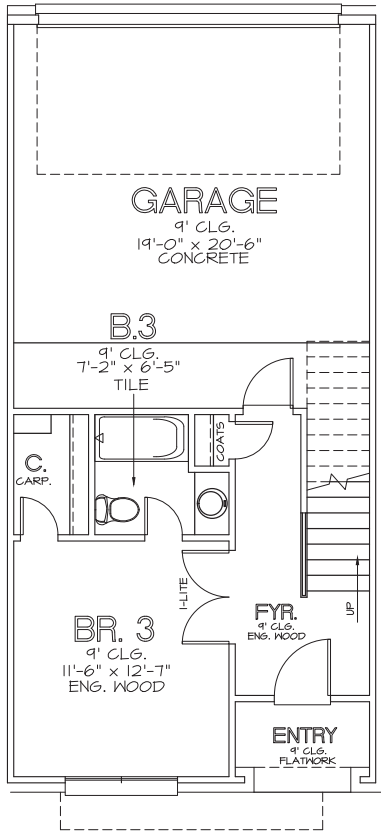
CHOICE IS THE ULTIMATE LUXURY



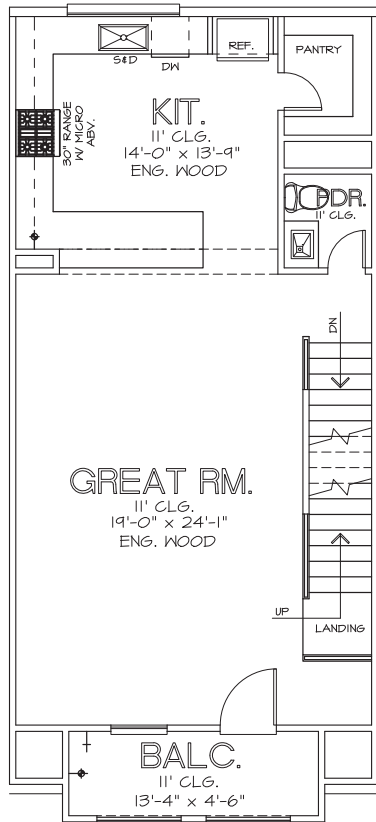


CITY HOMES
CHOICE

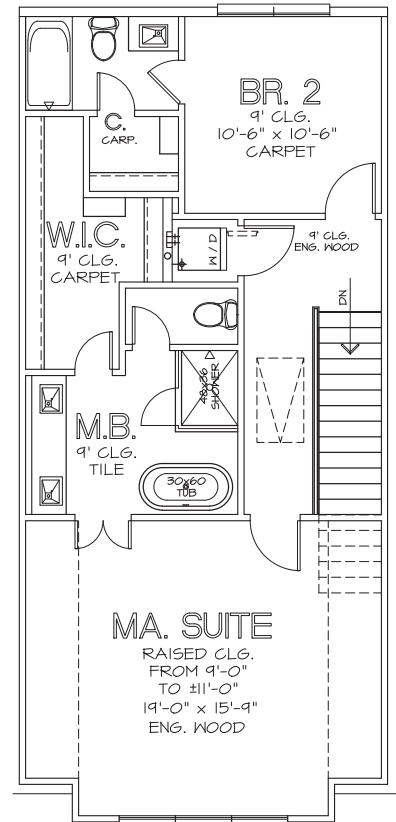
MOY STREET PARK
THE ALLEN - 1,922 SQ. FT.



FIRST FLOOR



SECOND FLOOR



THIRD FLOOR



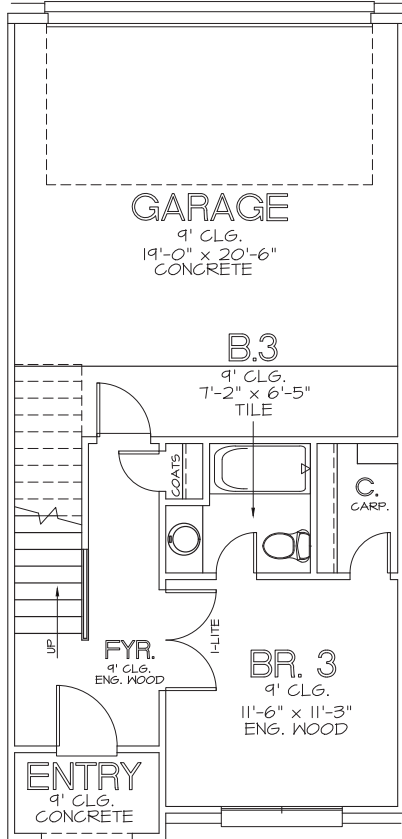
CHOICE IS THE ULTIMATE LUXURY



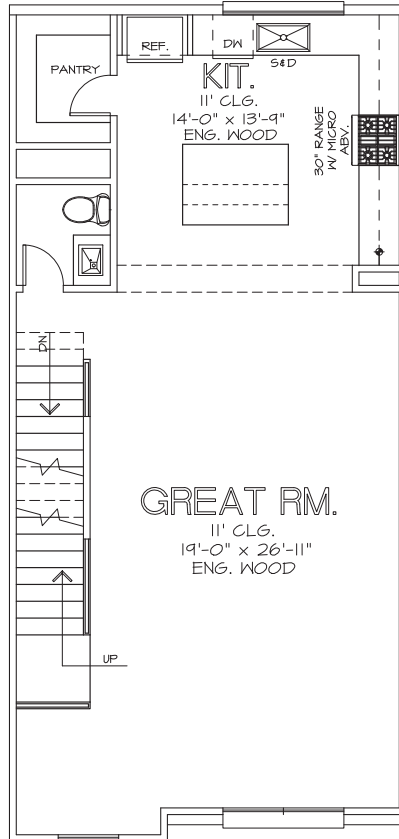


CITY HOMES CHOICE

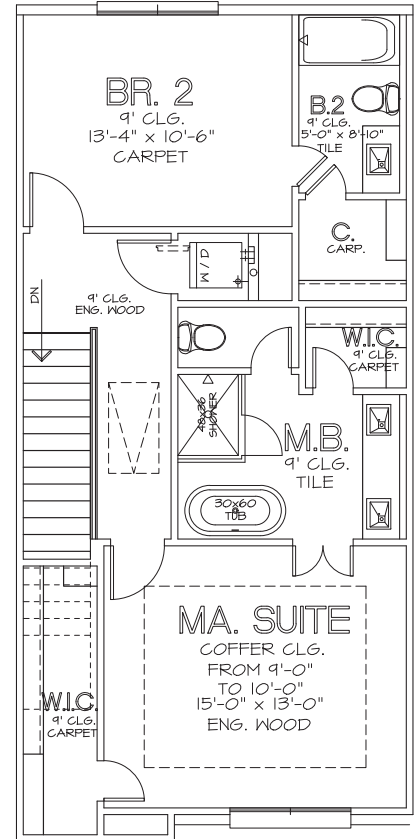
MOY STREET PARK THE REVERE - 1,903 SQ. FT.



FIRST FLOOR



SECOND FLOOR



THIRD FLOOR



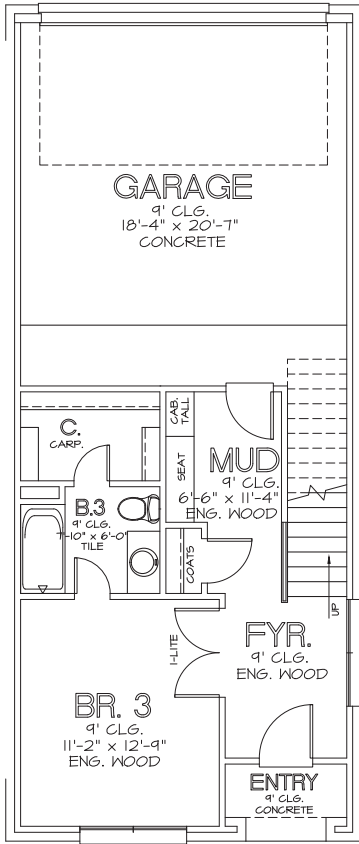
CHOICE IS THE ULTIMATE LUXURY



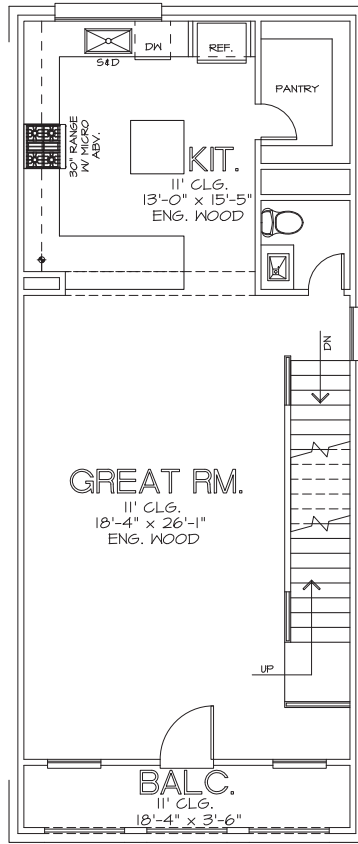


CITY HOMES CHOICE

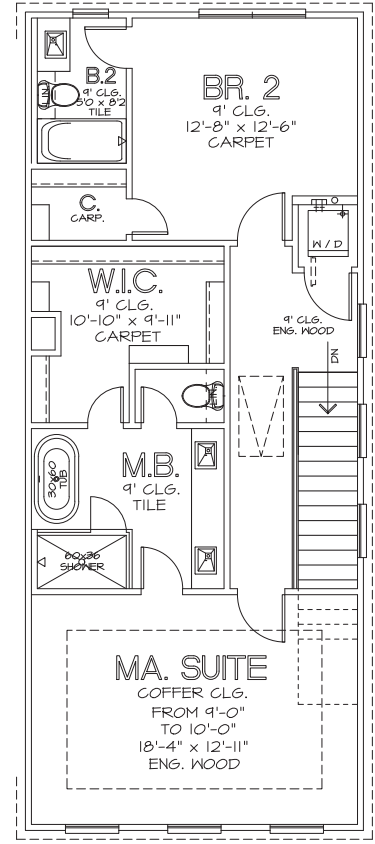
MOY STREET PARK THE OLYMPIA - 2,076 SQ. FT.



FIRST FLOOR



SECOND FLOOR



THIRD FLOOR



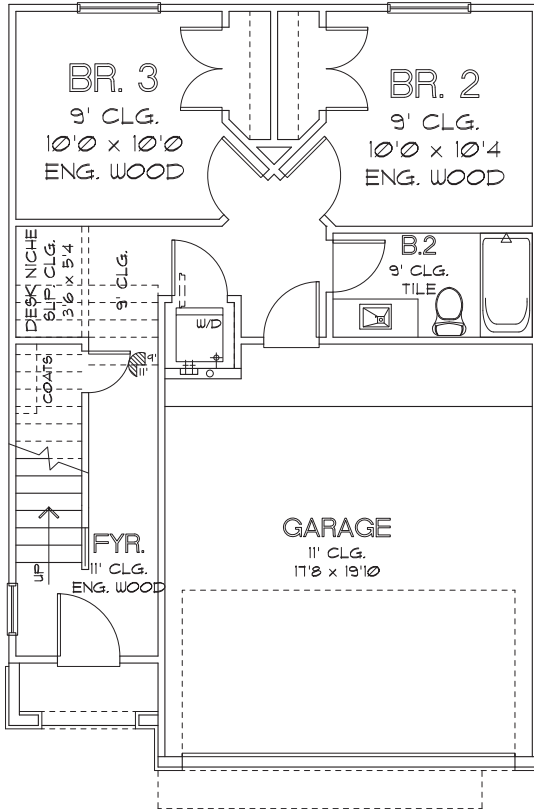
CHOICE IS THE ULTIMATE LUXURY



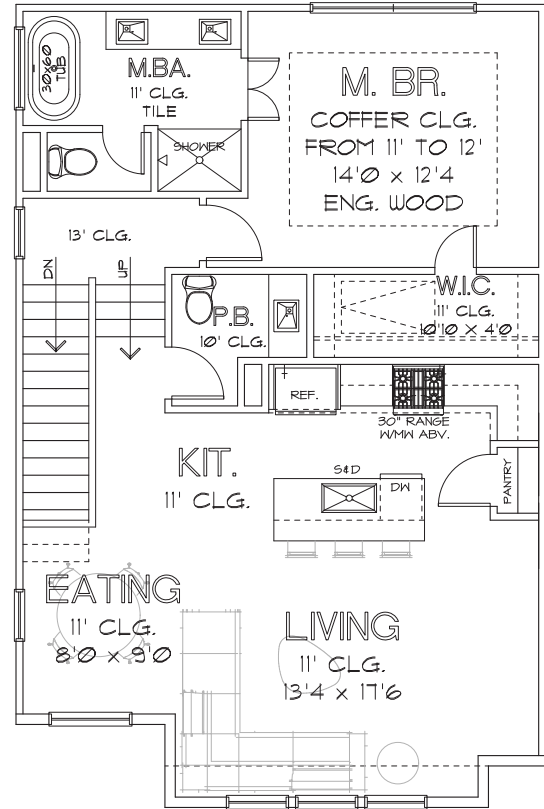


CITY HOMES
CHOICE

MOY STREET PARK
THE INWOOD - 1,415 SQ. FT.



FIRST FLOOR



SECOND FLOOR



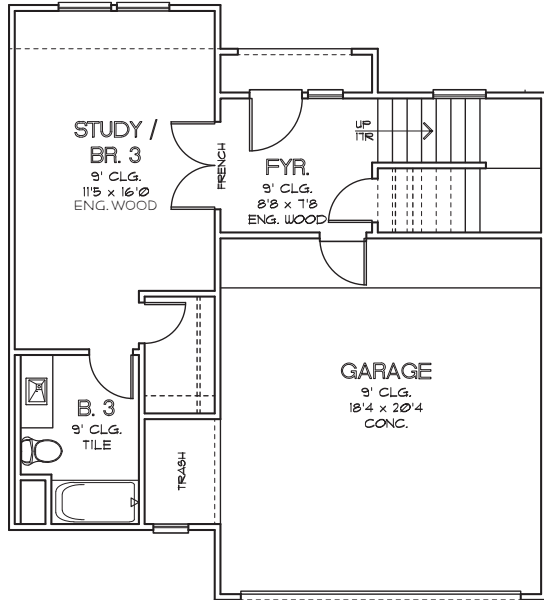
CHOICE IS THE ULTIMATE LUXURY



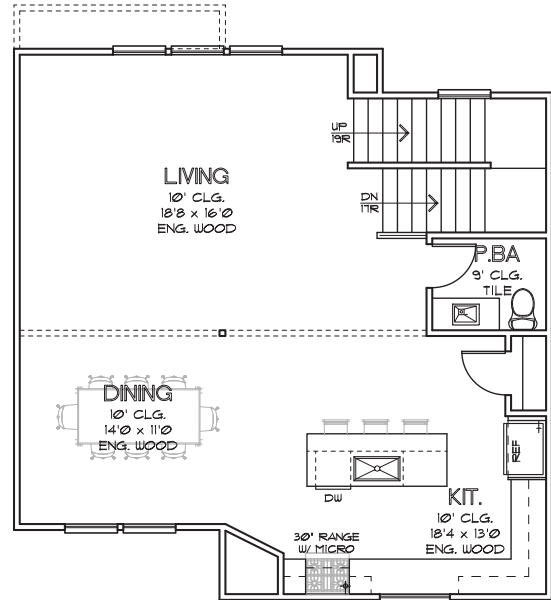


CITY HOMES CHOICE

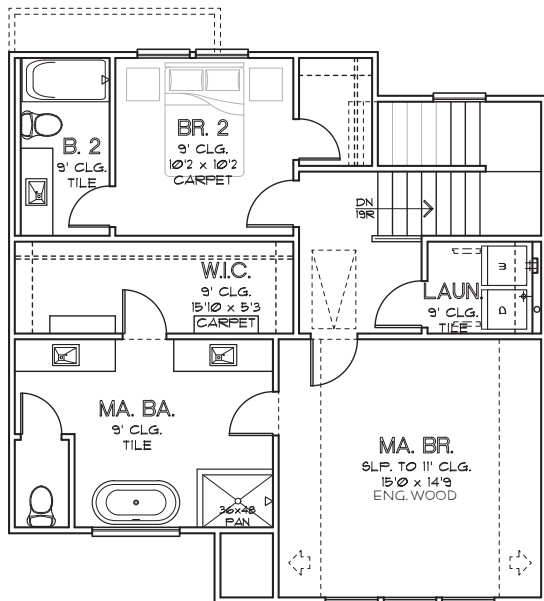
MOY STREET PARK THE AVALON - 2,205 SQ. FT.



FIRST FLOOR



SECOND FLOOR



THIRD FLOOR



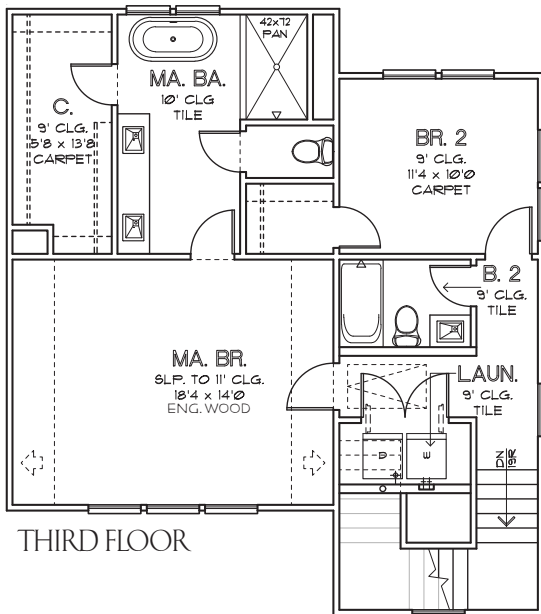
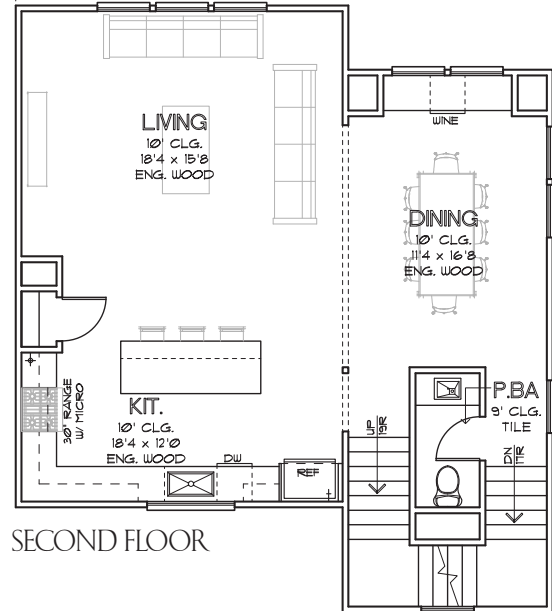
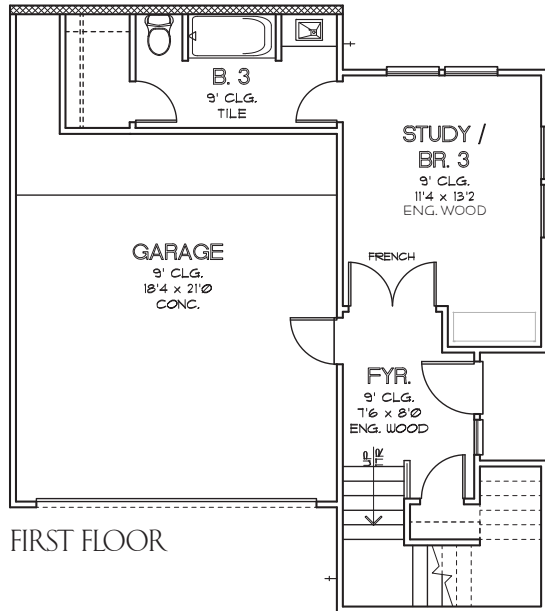
CHOICE IS THE ULTIMATE LUXURY





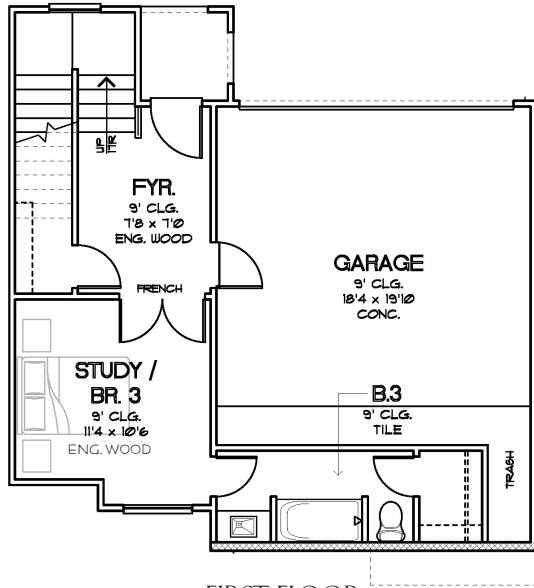
CITY HOMES CHOICE

MOY STREET PARK THE LOGAN - 2,914 SQ. FT.

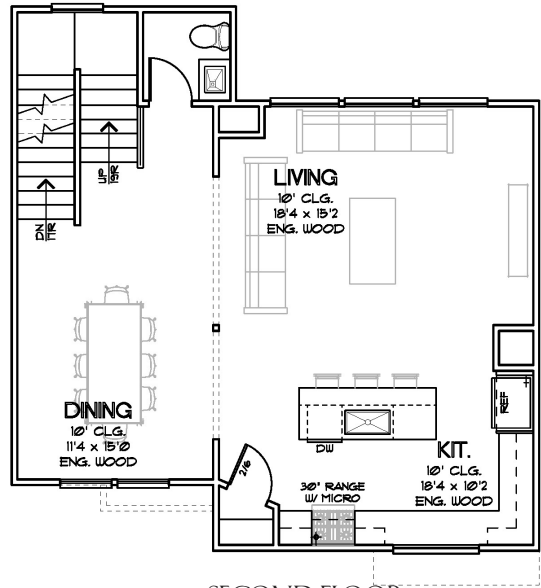


CHOICE IS THE ULTIMATE LUXURY

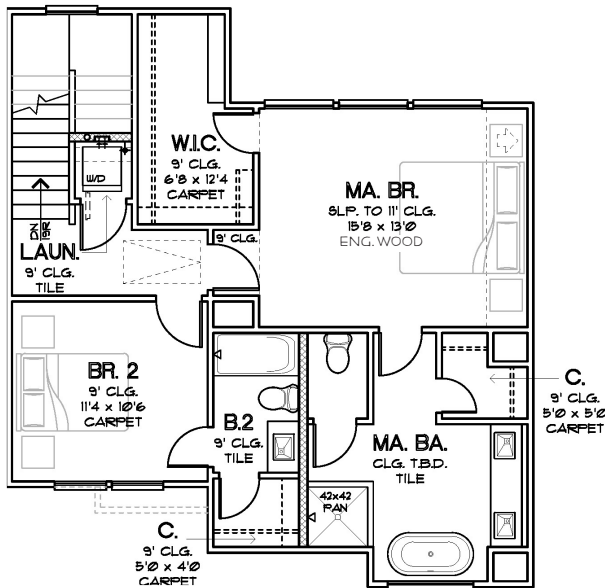




FIRST FLOOR



SECOND FLOOR



THIRD FLOOR

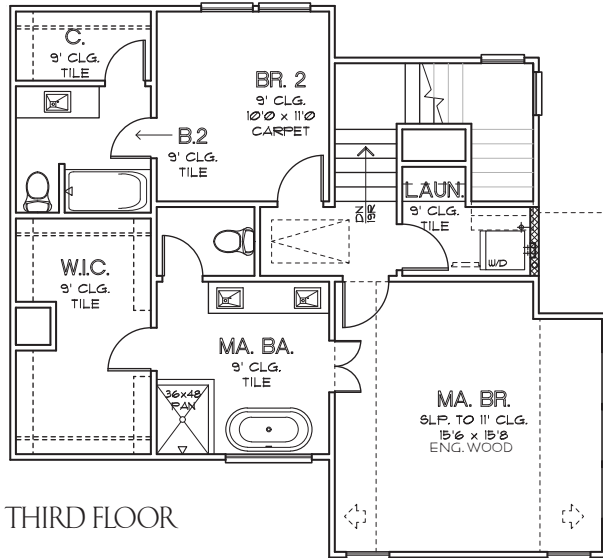
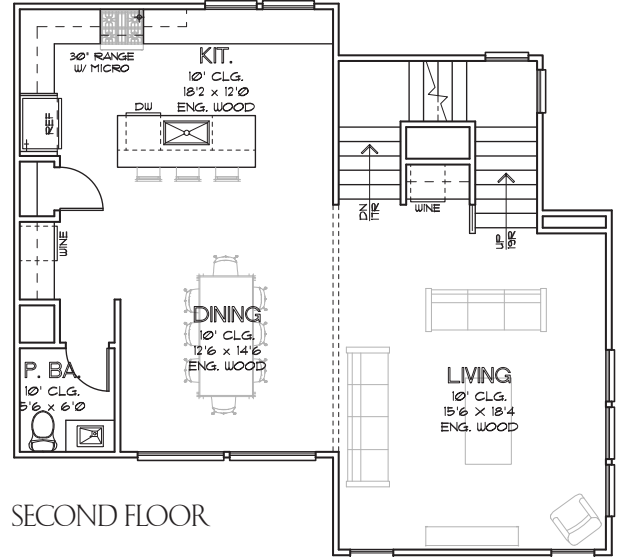
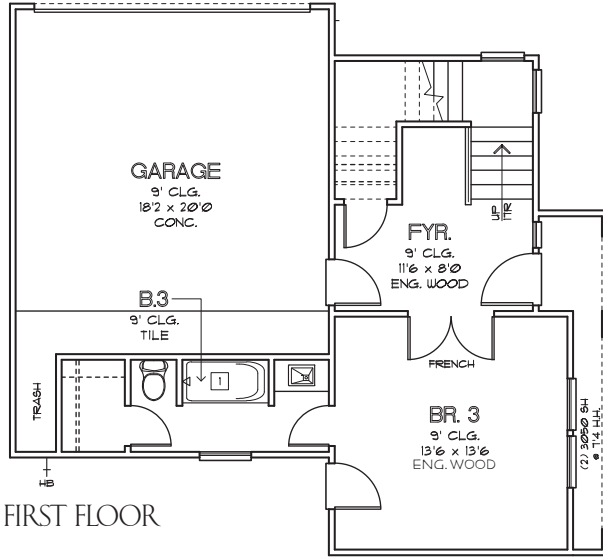


CHOICE IS THE ULTIMATE LUXURY



CITY HOMES
CHOICE

MOY STREET PARK
THE WASHINGTON - 2,218 SQ. FT.



CHOICE IS THE ULTIMATE LUXURY





MOY STREET PARK

HOME FEATURES & SPECIFICATIONS

FIRST FLOOR (ENTRY WAY, FIRST BEDROOM, FIRST BATHROOM)

- Engineered Swiss Flooring in Entry Hall
- Coat Closet
- First Bedroom with Engineered Swiss Flooring
- Designer Porcelain Floors in Bathroom and Shower
- Quartz Countertops
- Undermounted Sink
- Moen Plumbing Fixtures
- Laminate Wood Steps up to Second Floor

SECOND FLOOR (KITCHEN, DINING, LIVING ROOM)

- Engineered Swiss Flooring throughout Second Floor
- Laminate Wood Treads
- Quartz Countertops
- Subway Tile Backsplash
- Shaker Cabinetry
- Powder Room with Pedestal Sink

THIRD FLOOR

- Engineered Swiss Flooring in Hallways
- Laminate Wood Treads on Stairs

Master Bathroom

- Engineered Swiss Flooring
- Designer Porcelain Floors in Bathroom and Shower
- Free-Standing Soaking Tub
- Frameless Glass Shower
- Moen Plumbing Fixtures
- Undermounted Sink
- Quartz Countertops
- Framed Mirrors
- Shaker Cabinetry

Secondary Bathroom

- Designer Porcelain Flooring and Paneling in Shower
- Quartz Countertops
- Undermounted Sink
- Moen Plumbing Fixtures
- Shaker Cabinetry

MECHANICAL SPECIFICATIONS

Foundation

- Engineered Post Tension Foundation
- 3,000 PSI Concrete
- Engineered Building Pads

Frame and Cornice

- Engineered Structural Framing
- 2"x4" Stud Grade Fire Walls, Every 16" (+or-) O.C.
- Yellow Pine Ceiling Joints 16" (+or-) O.C.
- Yellow Pine Rafters, 16" (+or-) O.C.
- 7/16" OSB Roof Decking with TechShield Radiant Barrier
- 7/16" OSB Sheathing
- Engineered Wood Trusses Per Floor

- 3/4" Tongue and Groove Subfloor
- Cem Plank Siding
- All Subfloor is Glued, Nailed and Screwed
- Anthony Power Beams
- Windstorm Per Plans and Codes

Windows

- Aluminum Frame, Insulated (Double Pane), Clear Glass with Low-E

Ceiling Heights

- 9' First Floor
- 10' Second Floor
- 9' to 11' Third Floor

Exterior

- HardiPlank siding or Hardi Stucco Board
- Sherwin Williams Conflex Elastomeric Coating
- 30-Year Roof Shingle

Air Conditioning and Heating

- 3.5 Ton 16 SEER System
- Trane Condensing Unit
- Trane Furnace
- R-8/6 Silver Flex Duct in Attic
- Programmable Thermostats

Electrical

- All Copper Wiring throughout the House
- GFI Safety Switches where Required by Codes
- 150 AMP Main Electric Panel
- All Other Electrical Wiring as Per Floor Plans
- Recessed Can Lighting

Plumbing

- CPVC Vents and Drain Pipes
- Black Steel Pipes for Gas
- Insulated Exposed Water Lines
- 40-Gallon Water Heater

Insulation

Area:	Material:	R-Value:	Thickness:
Exterior Walls	Batt	R-19	5"
Cold Floors	Batt	R-19	12"
Ceilings	Batt	R-19	5"
Attic	Blown	R-38	12"

Appliances

- Washer: Samsung WF42H5000AW
- Dryer: Samsung DV42H5000EW
- Dishwasher: Samsung DW80M2020US
- Cooktop: Samsung NX58K3310SS
- Microwave: Samsung ME16K3000AS
- Refrigerator: Samsung RS25J500DSR

CHOICE IS THE ULTIMATE LUXURY



