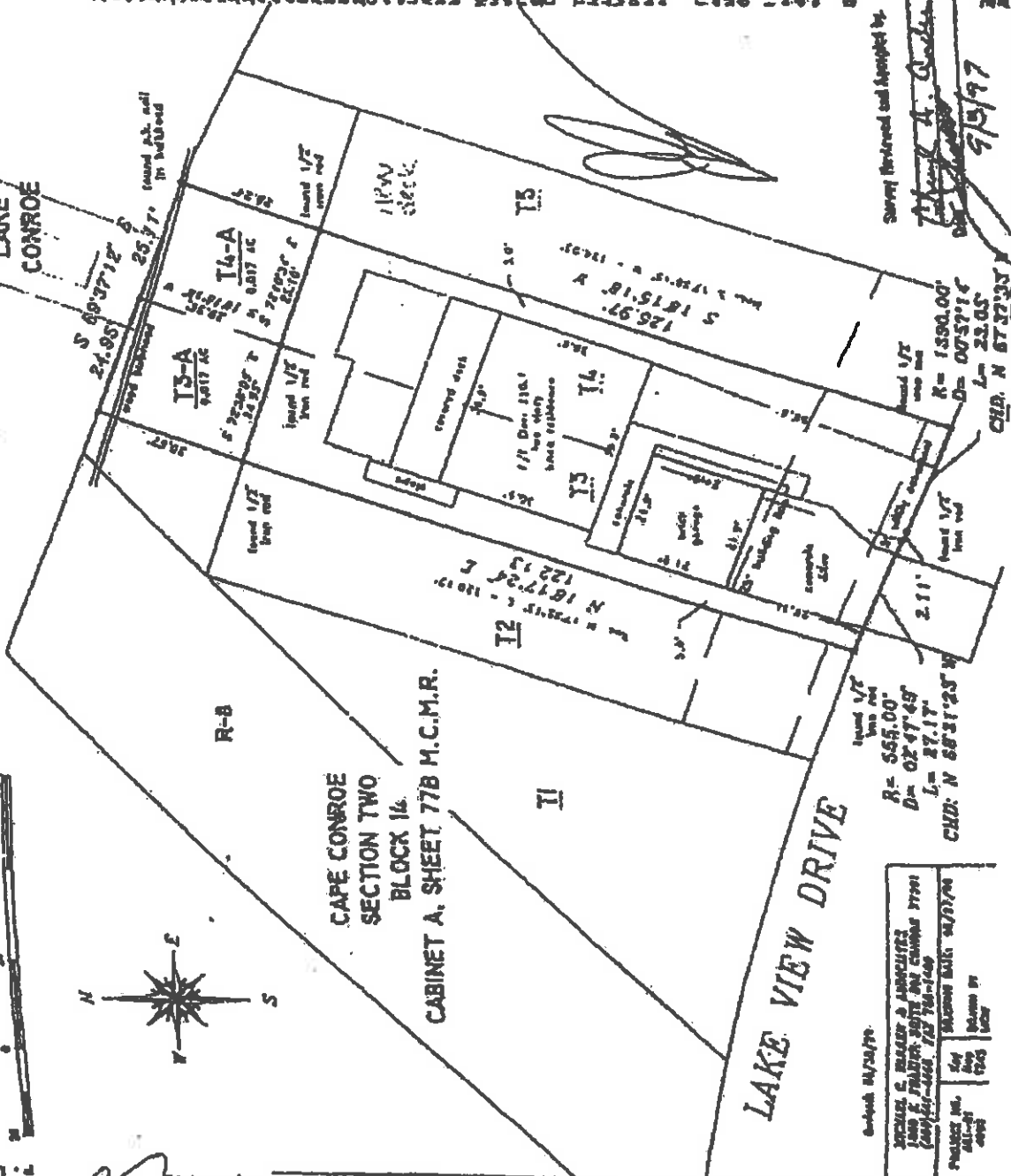


JAMES C. RALLER & ASSOCIATES
 ARCHITECTS
 3005 E. PRUDEN DRIVE
 DENVER, COLORADO 80231
 PHONE: 724-1242 FAX: 724-1243
 WWW: JCRALLER.COM

LAKE CONROE
 J.C.I.



JUN-05-03 THU 02:01 PM
 JUN 08 02 11:22
 FAX NO.

Michael
 6/3/14
 10/6/14
 Klatner Schaefer

R=555.00'
 D=129.00'
 L=27.17'
 CHD: N 68°31'25" W

R=1390.00'
 D=129.00'
 L=23.05'
 CHD: N 67°32'33" W

R=129.00'
 D=129.00'
 L=129.00'
 CHD: N 72°54'30" W

JUN 05 2003
 JAMES C. RALLER & ASSOCIATES
 3005 E. PRUDEN DRIVE DENVER, CO 80231
 PHONE: 724-1242 FAX: 724-1243
 WWW: JCRALLER.COM

BEING PREPARED AND SIGNED BY:
 Michael
 6/3/14
 10/6/14



1. These sheets were prepared in accordance with the provisions of Article 1020 of the Colorado Revised Statutes, and the Engineer is responsible for the accuracy of the information contained herein.

2. These sheets were prepared in accordance with the provisions of Article 1020 of the Colorado Revised Statutes, and the Engineer is responsible for the accuracy of the information contained herein.

3. These sheets were prepared in accordance with the provisions of Article 1020 of the Colorado Revised Statutes, and the Engineer is responsible for the accuracy of the information contained herein.

4. These sheets were prepared in accordance with the provisions of Article 1020 of the Colorado Revised Statutes, and the Engineer is responsible for the accuracy of the information contained herein.