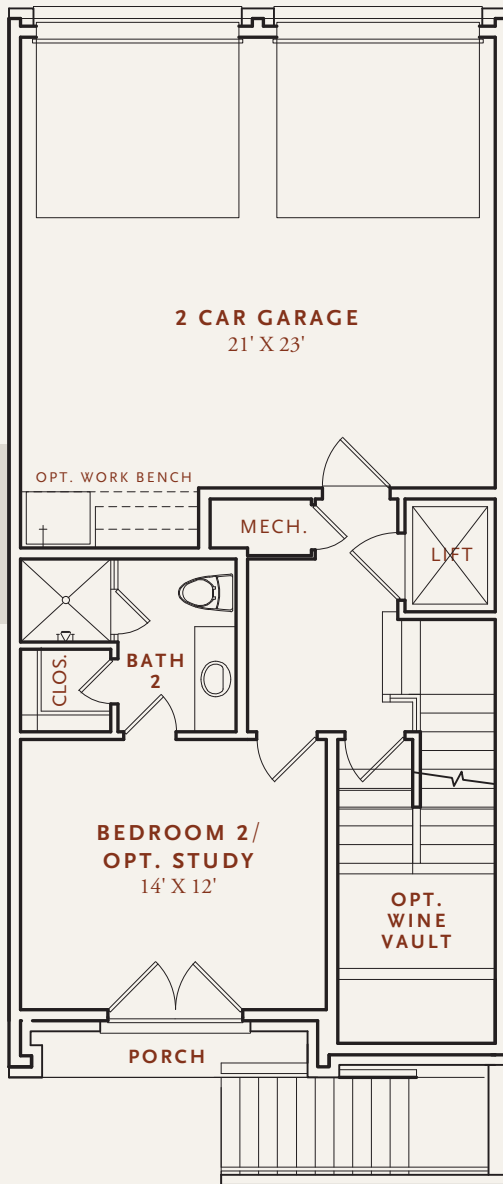


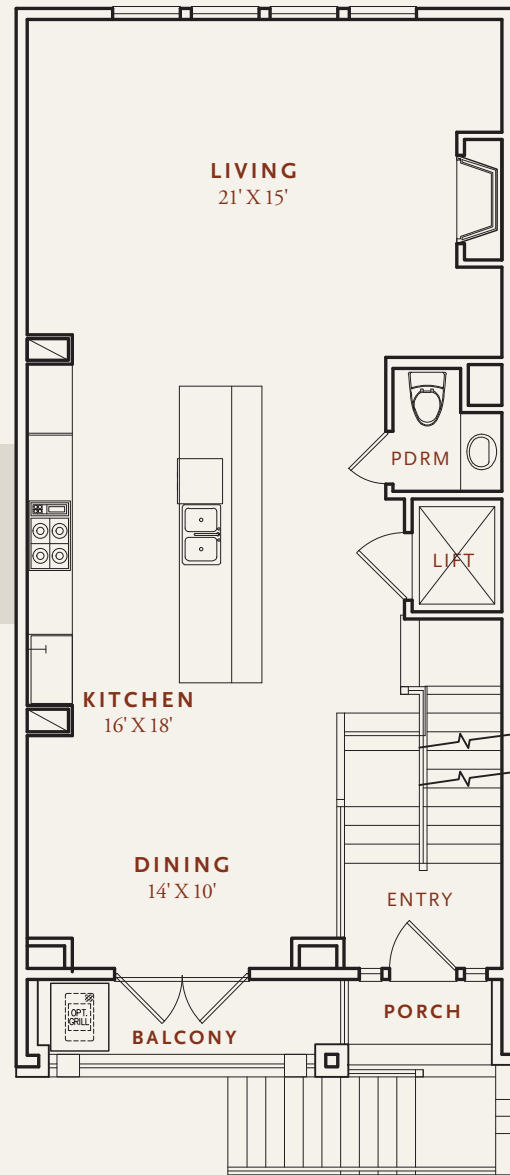
INDOOR: 3,095 SF | OUTDOOR: 399 SF

TOTAL LIVING: 3,494 SF

LEVEL
1



LEVEL
2



THE STRICKLAND A spacious 3 bedroom, 3 full bath and 1 half bath Southern Traditional Architecture inspired Crain Square home. The first floor consists of a guest suite that can be turned into a Study, and an oversized 2 car garage. The second floor features the main living and entertaining spaces with formal Living and Dining rooms and the gourmet Kitchen.



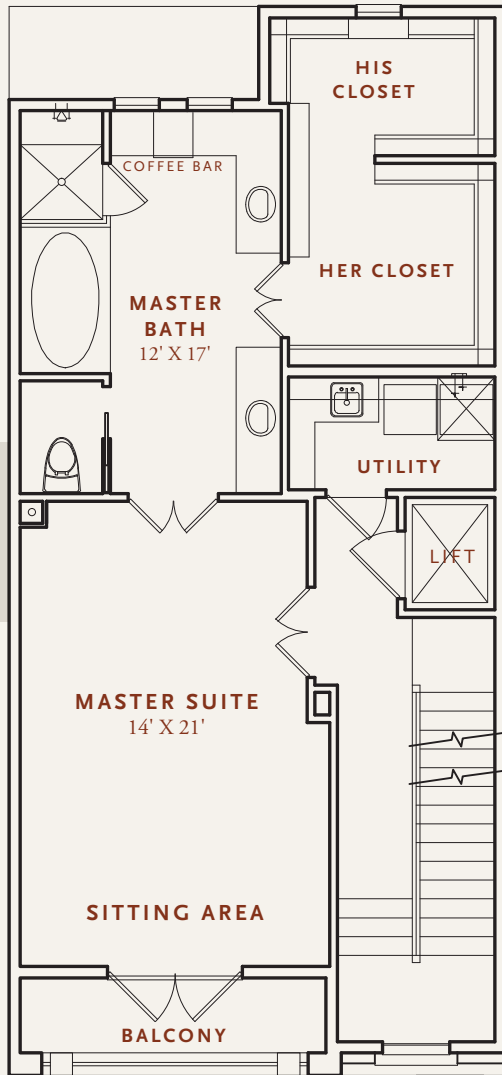
**CRAIN
SQUARE**

SOUTHSIDE PLACE USA

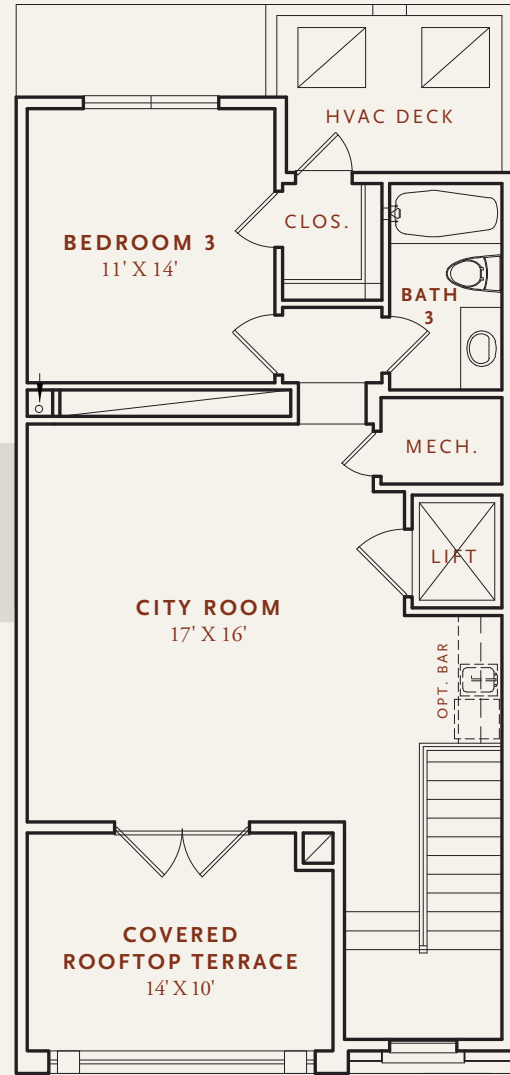
INDOOR: 3,095 SF | OUTDOOR: 399 SF

TOTAL LIVING: 3,494 SF

LEVEL
3



LEVEL
4



The third floor is highlighted by a Master Suite that includes a luxurious master bath, split oversized wardrobe closet, and a balcony. The fourth floor features a third guest suite and large City Room with optional wet bar. Get some fresh air by stepping out onto the fourth floor Covered Rooftop Terrace. And of course, each level is accessible with a custom elevator.



CRAIN
SQUARE
SOUTHSIDE PLACE USA



Prices and specifications subject to change without notice. All renderings are an artist's representation. Please see a sales counselor for details.

CrainSquare.com