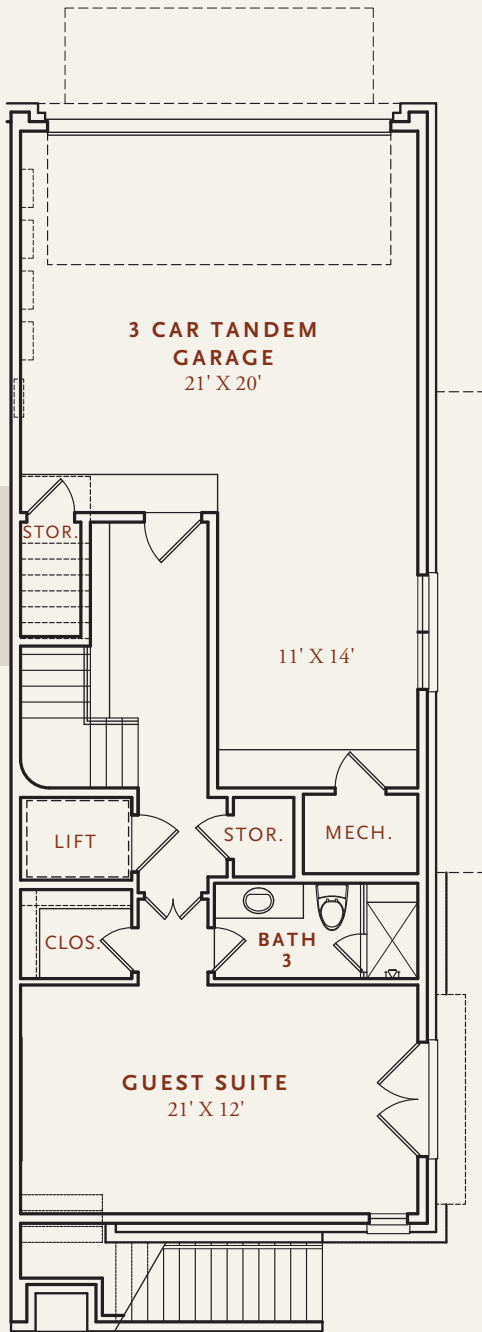


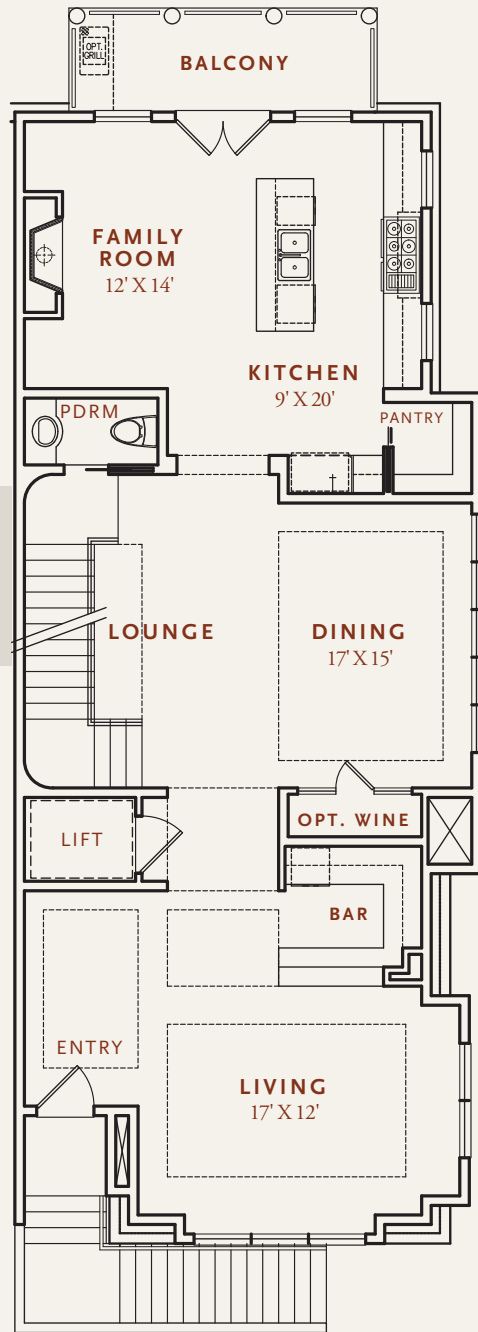
INDOOR: 4,105 SF | OUTDOOR: 692 SF

TOTAL LIVING: 4,797 SF

LEVEL 1



LEVEL 2



**THE HOBAN** A spacious 4 bedroom, 4 full bath and 1 half bath Southern Traditional Architecture inspired Crain Square home. The first floor consists of a guest suite and an oversized 3 car tandem garage. The second floor features the main living and entertaining spaces with formal Living and Dining rooms. The Family Room is open to the gourmet Kitchen and features an adjacent Balcony.

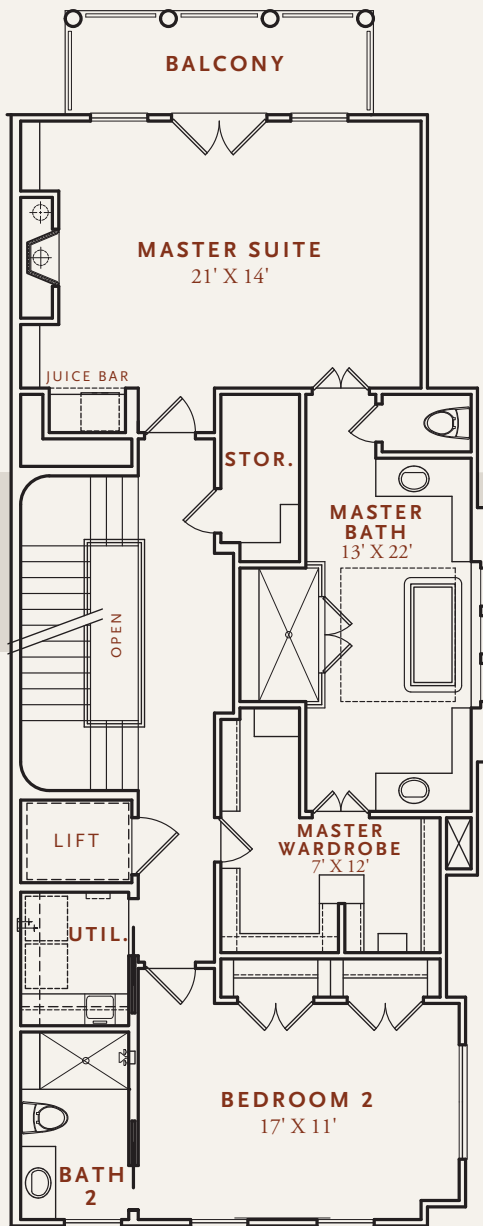


**CRAIN SQUARE**  
SOUTHSIDE PLACE USA

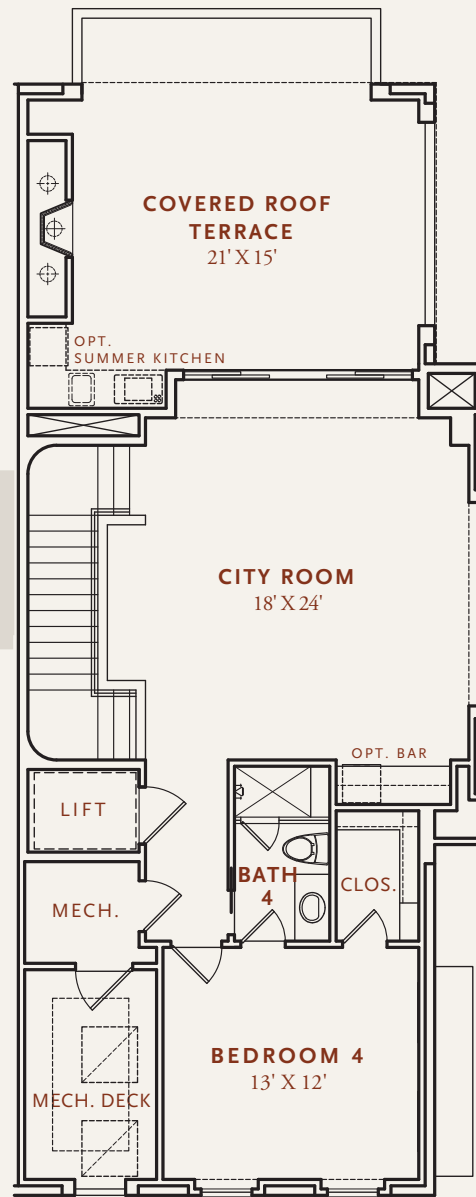
INDOOR: 4,105 SF | OUTDOOR: 692 SF

TOTAL LIVING: 4,797 SF

LEVEL 3



LEVEL 4



The third floor is highlighted by a Master Suite that includes a luxurious master bath, as well as a second private guest suite. The fourth floor features a fourth guest suite and large City Room with optional wet bar. Get some fresh air by stepping out onto the fourth floor Rooftop Terrace. And of course, each level is accessible with a custom elevator.



**CRAIN SQUARE**  
SOUTHSIDE PLACE USA



Prices and specifications subject to change without notice. All renderings are an artist's representation. Please see a sales counselor for details.

[CrainSquare.com](http://CrainSquare.com)