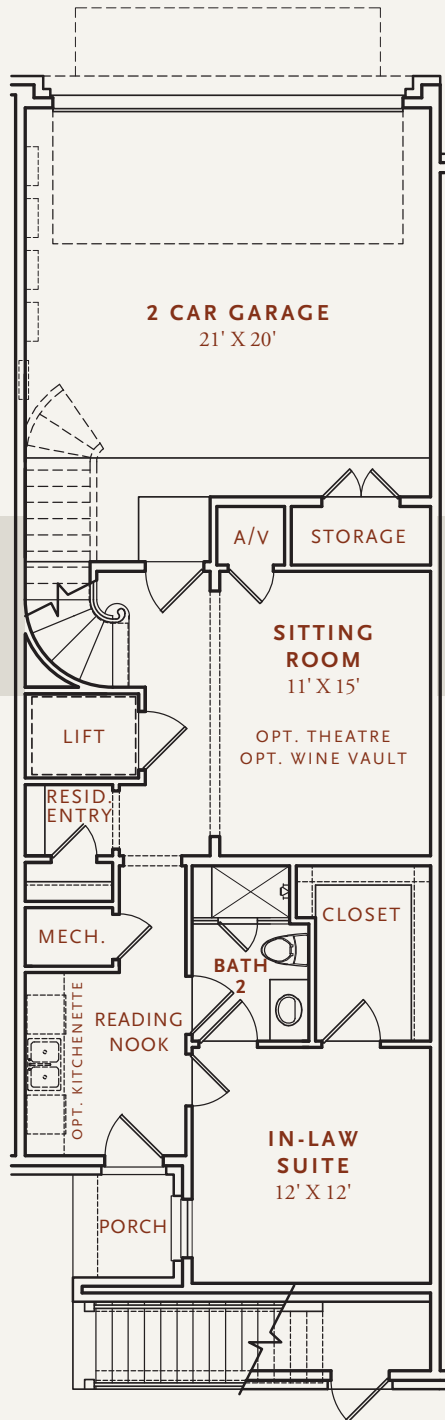


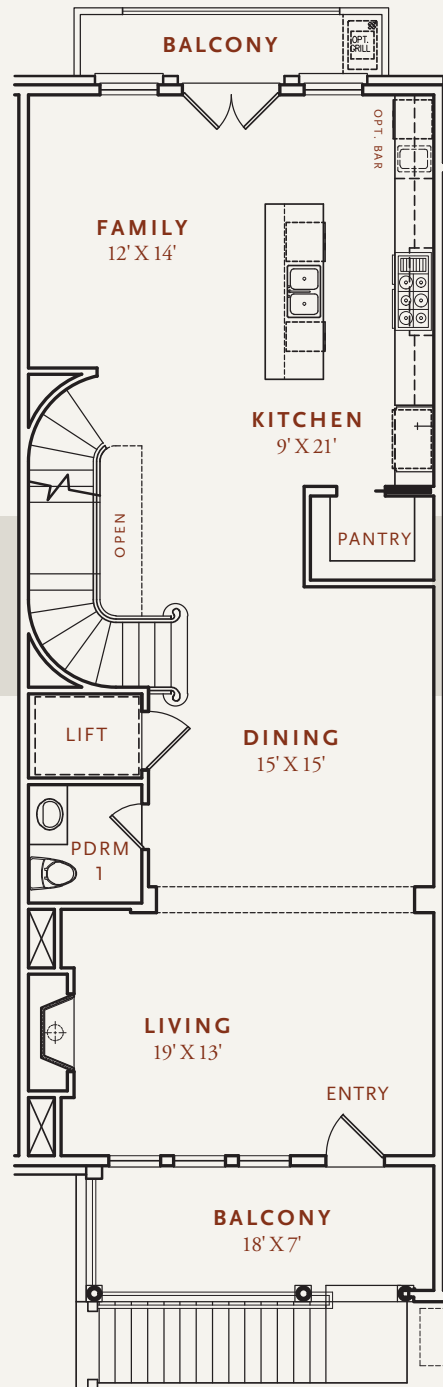
INDOOR: 3,686 SF | OUTDOOR: 908 SF

TOTAL LIVING: 4,594 SF

LEVEL 1



LEVEL 2



**THE LAFEVER** A spacious 3 bedroom, 3 full bath and 1 half bath Southern Traditional Architecture inspired Crain Square home. The first floor consists of an In-Law Suite with Sitting Room and an oversized two-car garage. The Sitting Room also has options for a Theatre Room or Wine Vault. The second floor features the main living and entertaining spaces with formal Living and Dining rooms, gourmet Kitchen, a Family Room and two Balconies, one on each end of the floor.



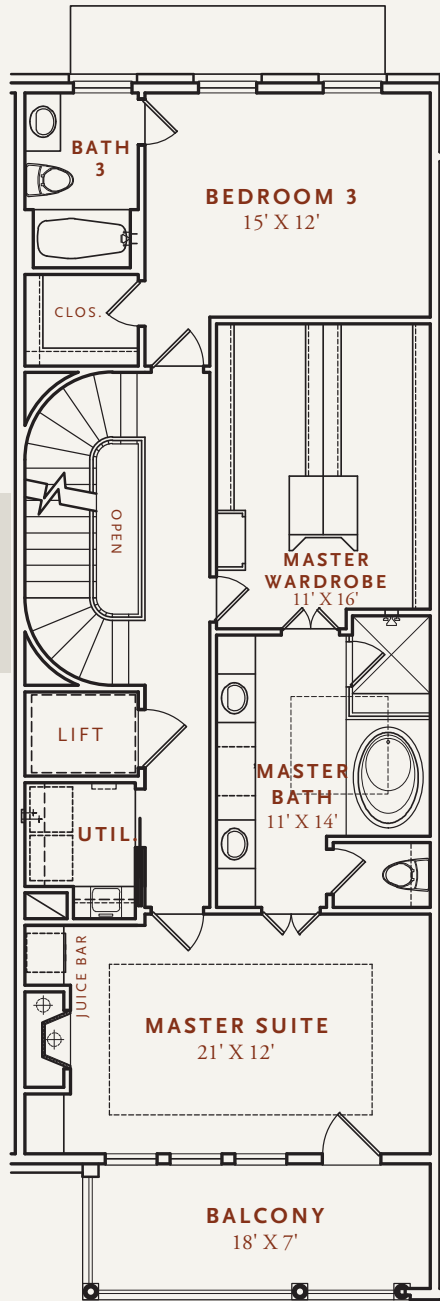
**CRAIN SQUARE**

SOUTHSIDE PLACE USA

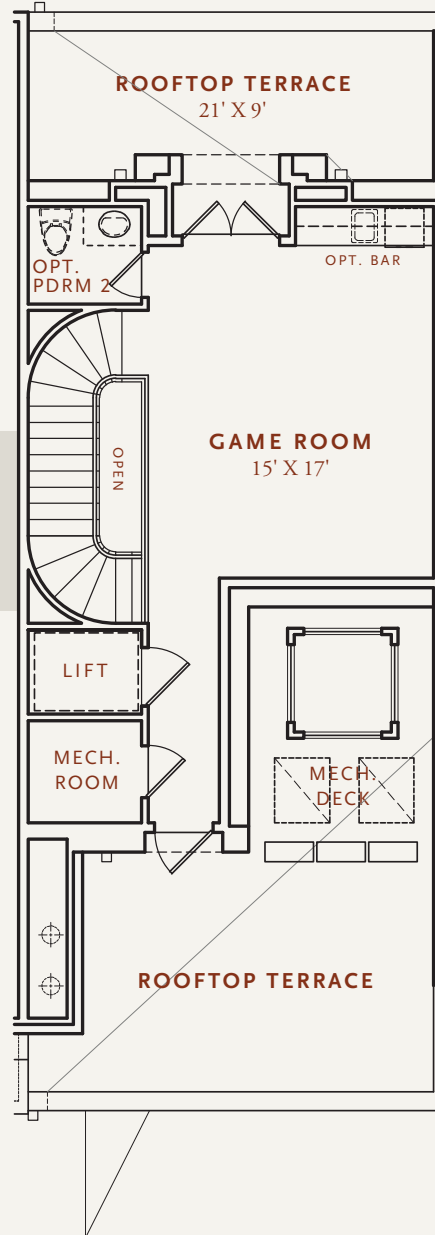
INDOOR: 3,686 SF | OUTDOOR: 908 SF

TOTAL LIVING: 4,594 SF

LEVEL  
3



LEVEL  
4



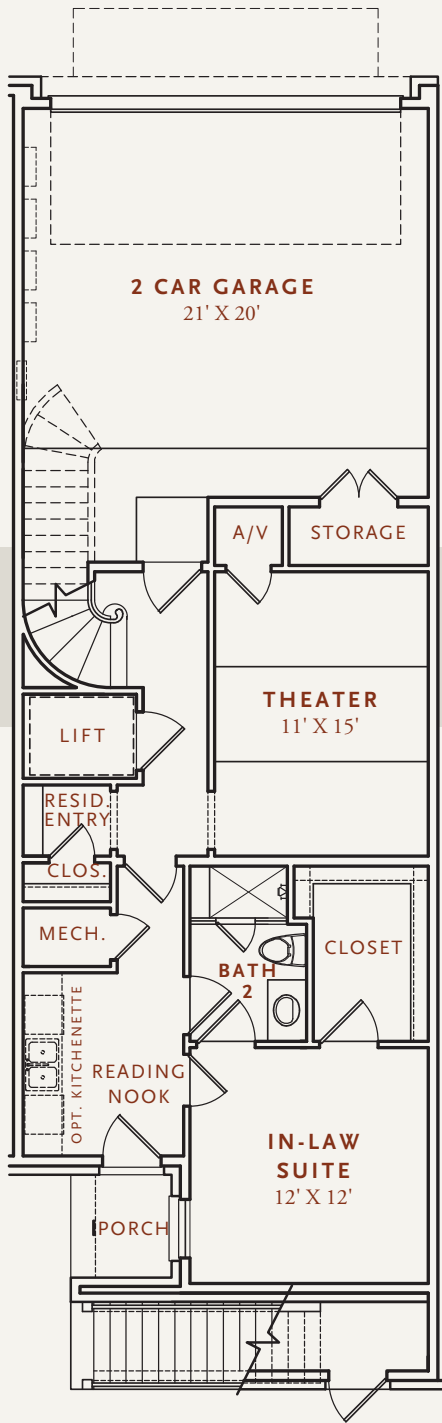
The third floor is highlighted by a Master Suite that includes a luxurious master bath and split oversized wardrobe closet as well as a third private Guest Suite that could be a nursery. The fourth floor features a large Game Room with an Optional Powder Room and Optional Bar. Get some fresh air by stepping out onto either of the fourth floor Rooftop Terraces. And of course, each level is accessible with a custom elevator.



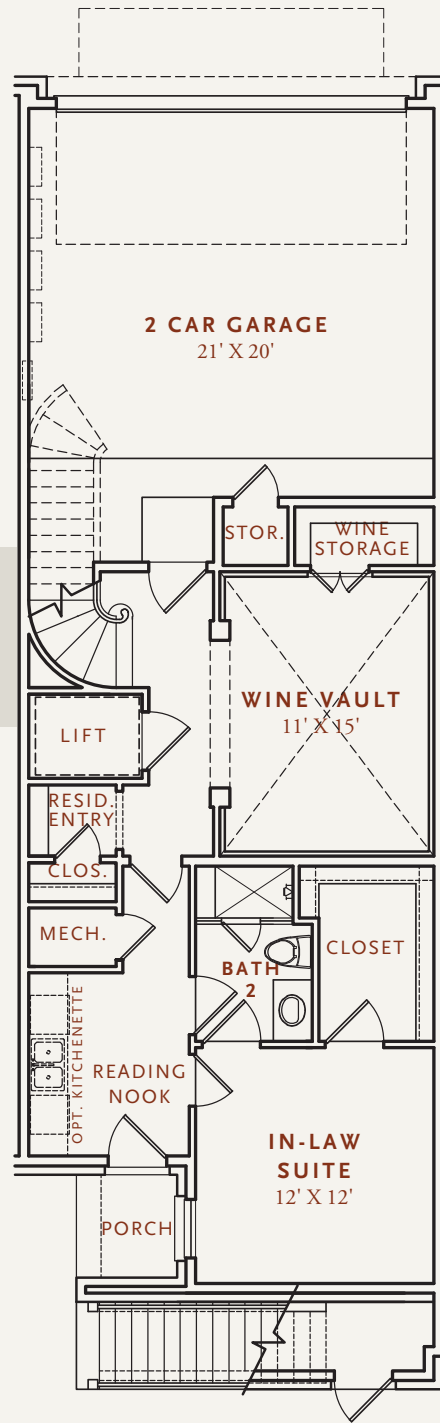
**CRAIN**  
SQUARE  
SOUTHSIDE PLACE USA



OPTION 1



OPTION 2



**THE LAFEVER** The first floor Sitting Room of the Lafever floorplan also comes in a Theatre option or a Wine Vault option.

Prices and specifications subject to change without notice. All renderings are an artist's representation. Please see a sales counselor for details.



**CRAIN**  
SQUARE  
SOUTHSIDE PLACE USA