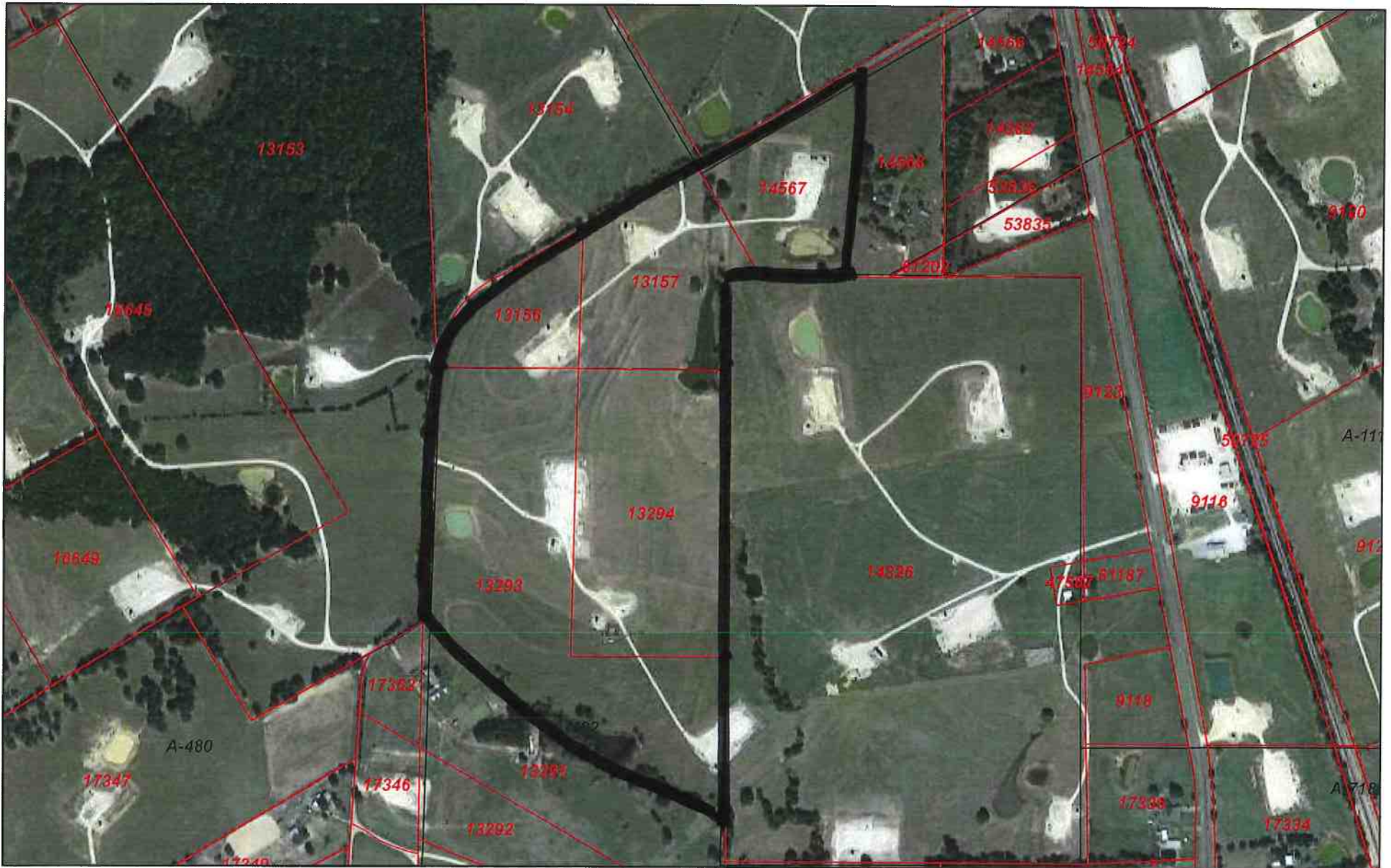

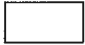
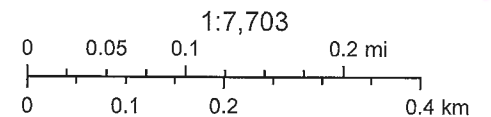


Freestone CAD Web Map



12/10/2019 10:23:50 AM

-  Parcels
-  Abstracts



© OpenStreetMap (and) contributors, CC-BY-SA

Freestone County Appraisal District, BIS Consulting - www.bisconsulting.com
Disclaimer: This product is for informational purposes only and has not been prepared for or be suitable for legal, engineering, or surveying purposes. It does not represent an on-the-ground survey and represents only the approximate relative location of boundaries.