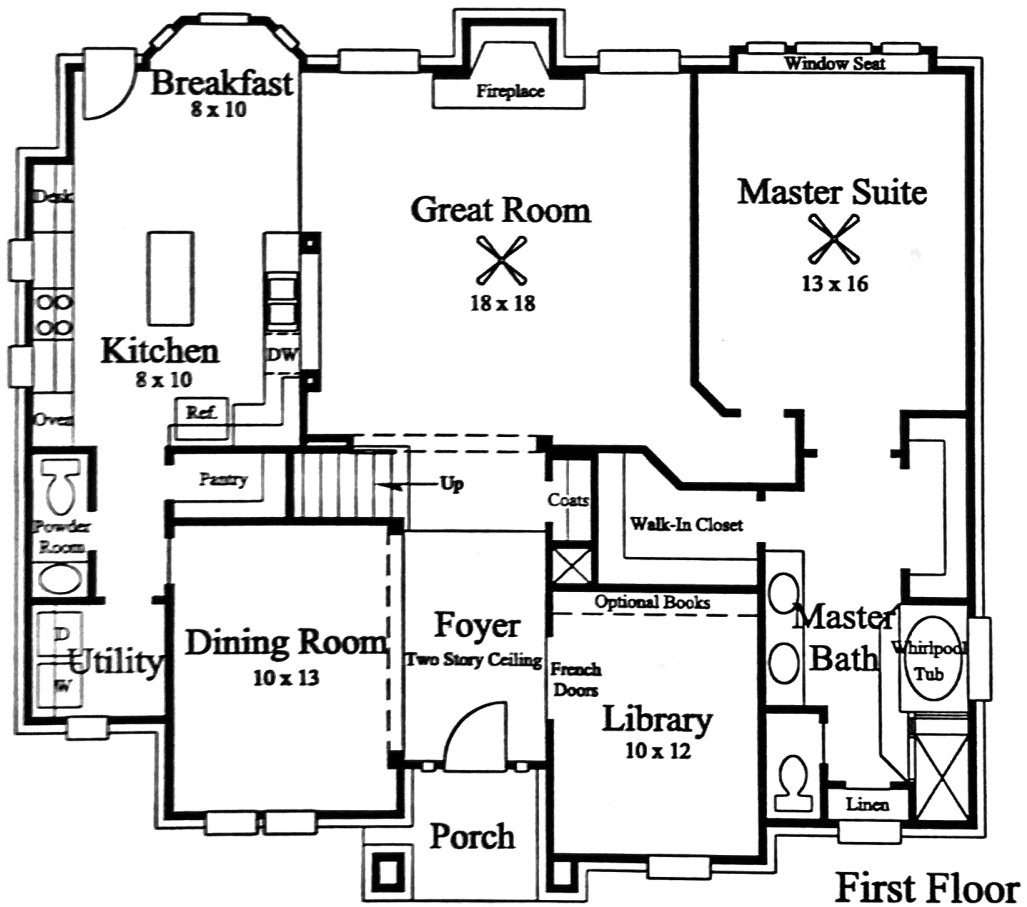
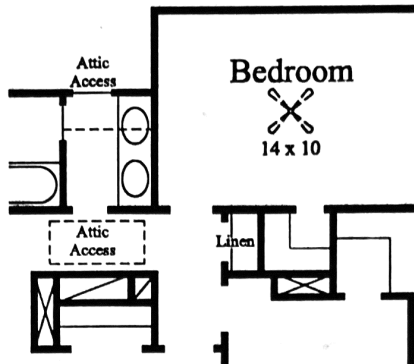


ASHEVILLE

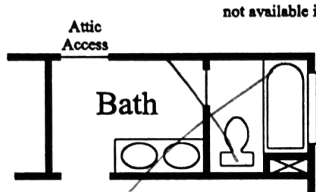
PLAN 467 - 2729 Sq. Ft.



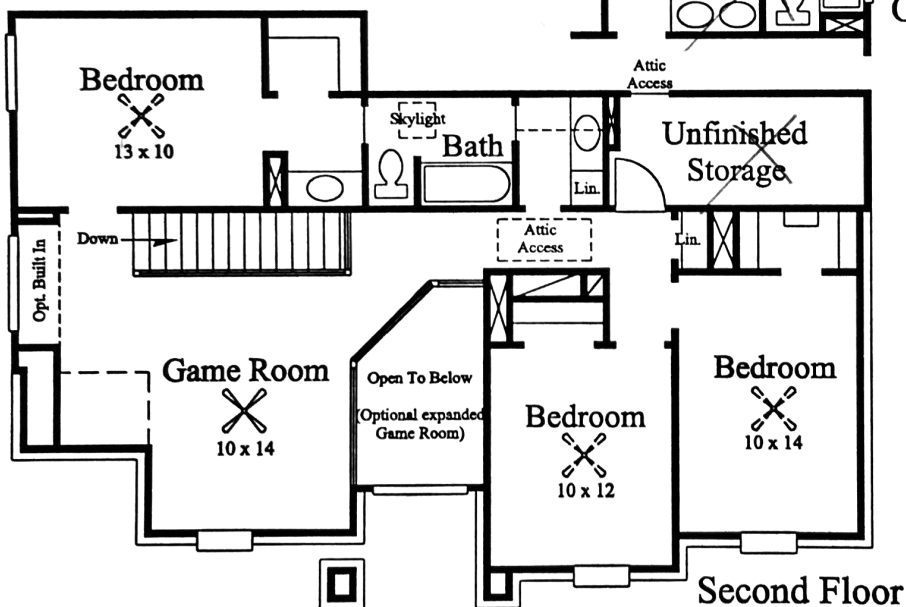
*10' x 15' - 13' x 15' - B-Rooms
10' x 11' - Dining Room
10' x 15' - Bookshelves*



Optional Bedroom 5



Optional Bath 3



Second Floor

- Two-story foyer graces the entry of this spacious home.
- The Great Room is open to the kitchen-perfect for casual entertaining.
- The kitchen features a large island, desk with bookshelves and under cabinet windows.
- The master suite is accented by a window seat, two large walk-in closets, custom linen cabinet and shower with convenient seat.
- The game room located upstairs has an optional built-in desk and may be expanded to suit the home buyers needs.
- An optional fifth bedroom is also available to home buyers.

*Golf Green
Tennis
Volleyball
clubhouse
Grill
Back to school
Parade*

240-