

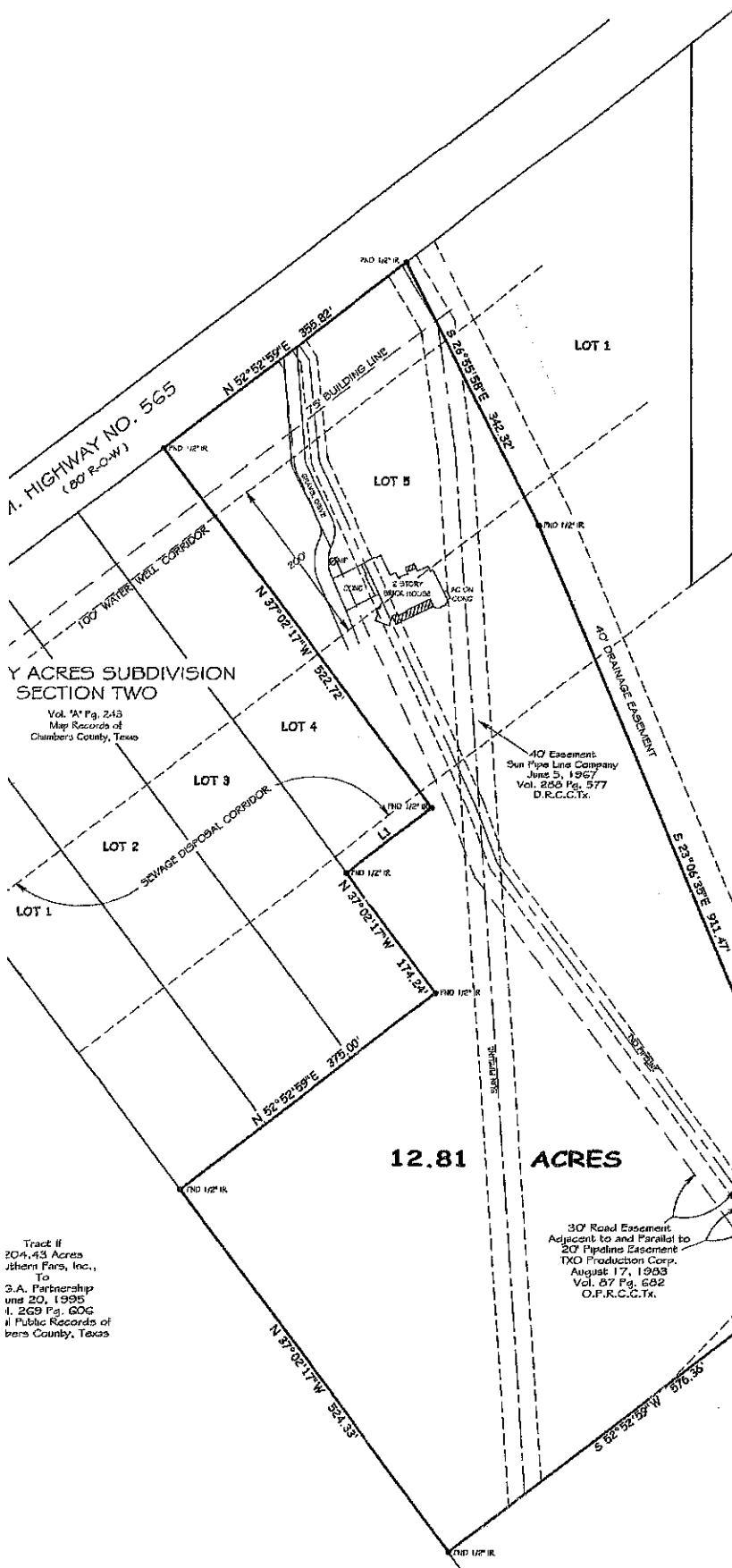


SCALE: 1" = 100'

# BENJAMIN WINFREE SURVEY A - 28

NOTES:

1. BEARINGS ARE BASED ON DEED BEARINGS AND FOUND MONUMENTS IN THE EAST LINE OF LOT 5 OF TIFFANY ACRES SUBDIVISION SECTION TWO, AS RECORDED IN VOLUME "A" AT PAGE 243 OF THE MAP RECORDS OF CHAMBERS COUNTY, TEXAS.
2. THIS PROPERTY IS LOCATED IN ZONE "C" ACCORDING TO P.L.R.M. COMMUNITY PANEL NO. 480119 0165 C, DATED DECEMBER 2, 1992.



## AMENDED PLAT OF TIFFANY ACRES SUBDIVISION LOTS 1 AND 3

Vol. 10<sup>th</sup> Pg. 226  
Map Records of  
Chambers County, Texas

40' Easement  
Sun Pipe Line Company  
June 5, 1967  
Vol. 255 Pg. 577  
D.R.C.C.Tx.

30' Easement  
Tennessee Gas Transmission Co.  
July 15, 1955  
Vol. 168 Pg. 363  
D.R.C.C.Tx.

30' Road Easement  
Adjacent to and Parallel to  
20' Pipeline Easement  
TXO Production Corp.  
August 17, 1983  
Vol. 87 Pg. 682  
O.F.R.C.C.Tx.

21.000 Acres  
Elmer R. Kigore, et al  
To  
David McAdams, et ux  
March 2, 2000  
Vol. 446 Pg. 637  
Official Public Records of  
Chambers County, Texas

12.81 ACRES

A. HIGHWAY NO. 565  
(80' R.O.W.)

Y ACRES SUBDIVISION  
SECTION TWO

Vol. 1<sup>st</sup> Pg. 243  
Map Records of  
Chambers County, Texas

Tract II  
204.43 Acres  
Jibert Farn, Inc.,  
To  
S.A. Partnership  
June 20, 1995  
Vol. 269 Pg. 606  
Official Public Records of  
Chambers County, Texas

| LINE | BEARING      | DISTANCE |
|------|--------------|----------|
| L1   | N 52°52'59"E | 125.00'  |