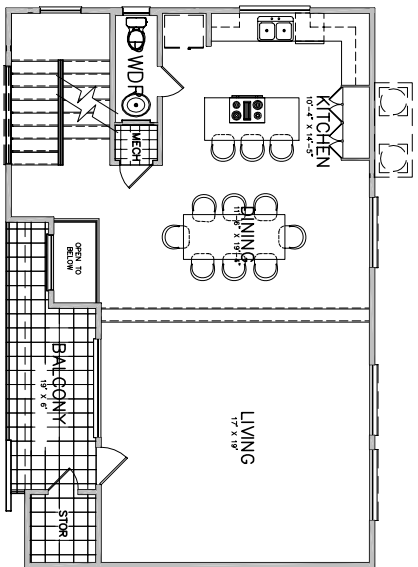
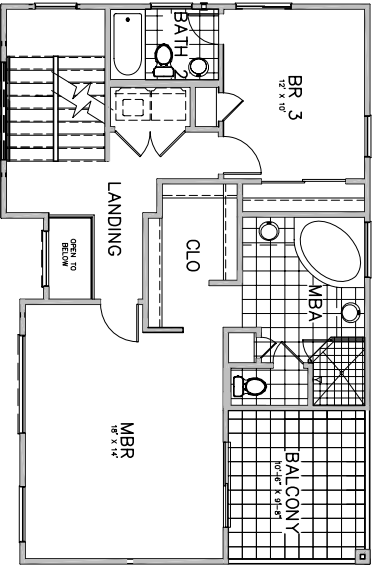


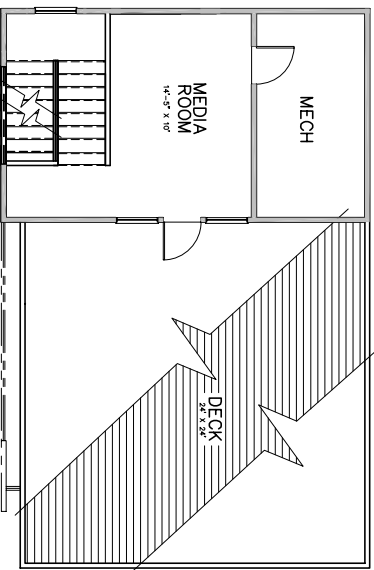
FIRST FLOOR
1/8" = 1'-0"



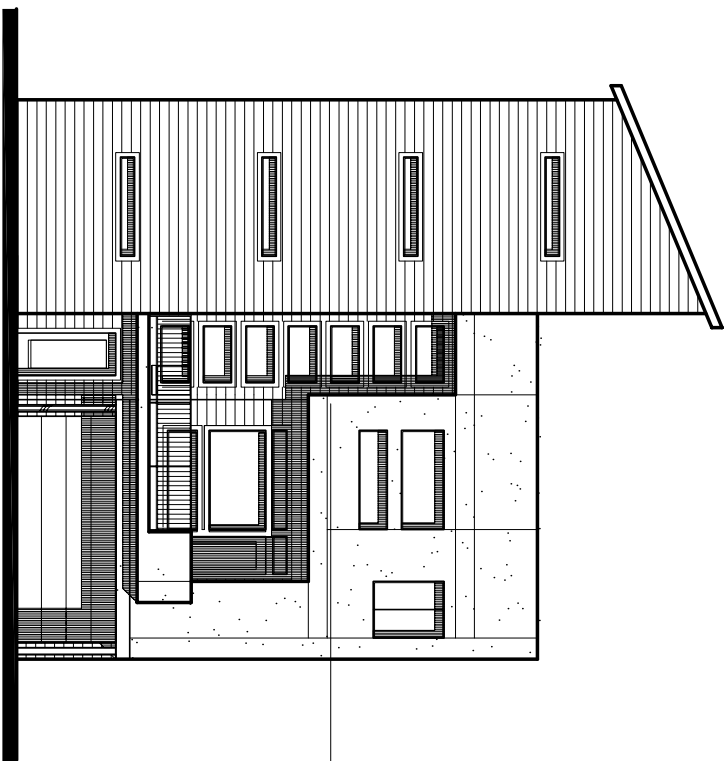
SECOND FLOOR
1/8" = 1'-0"



THIRD FLOOR
1/8" = 1'-0"



ROOF LEVEL
1/8" = 1'-0"



FRONT ELEVATION
1/8" = 1'-0"

UNIT C

TOTAL A/C AREA.....2,358 SQ. FT.

CUMMINGS DEVELOPMENT, INC.

CONSTRUCTION

DESIGN / BUILD

9306 Woodmeadow
Houston, TX 77025
PH: (713) 550-7331
FAX: (713) 668-0456