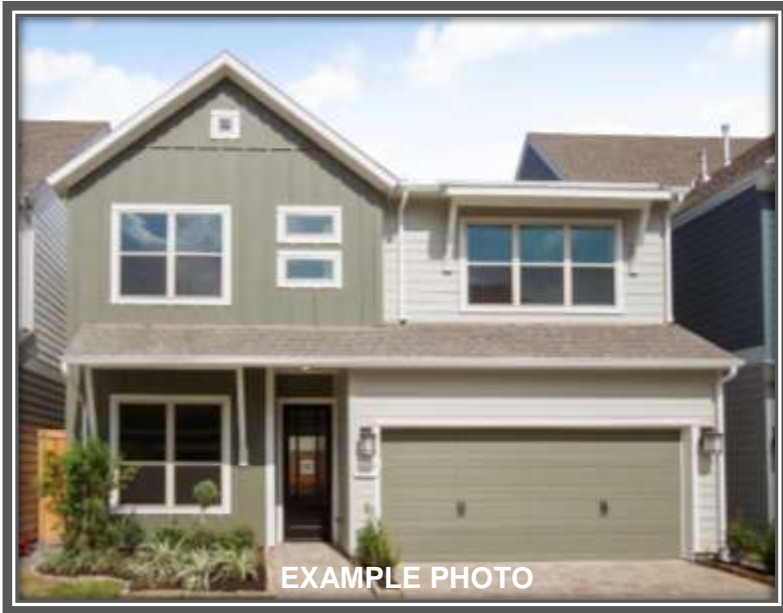


# HOME SWEET *Quick Move-in* HOME



## THE WHITBURN

2509 Turnbull



3



2 Full, 1 Half Bath

- ✓ 2312 SQ FT
- ✓ Study
- ✓ Retreat at 2<sup>nd</sup> floor
- ✓ Super Shower
- ✓ Custom closets throughout

NEW 2-story home with 3 Bedrooms, 2-1/2 Baths plus Study and Retreat. Wood floors at first floor Living area and wood treads with iron spindles. Beautiful Kitchen with Carrara Grigio Quartz counters, separate convection oven & built-in microwave, gas cooktop & updraft vent hood. Big windows across rear of home looks onto fully landscaped rear yard and patio for entertaining. Raised ceiling at 2<sup>nd</sup> floor Master with big windows! Super Shower at Master with rain shower head and quartz countertop. Big Retreat / Game room! Custom closets throughout home. Situated across from pool & next to walking trail! Enjoy all the light coming into this home! March completion.

David Weekley Homes is an Environments for Living **DIAMOND** Level Builder! Heating & cooling *usage* is **GUARANTEED** for 3 years!



### LIMITED GUARANTEE

FLOOR PLAN	PLAN REVIEW REV DATE	PROJECTED HERS INDEX	ANNUAL HEATING FUEL USE	ANNUAL HEATING & COOLING FUEL USE (KWH)	ESTIMATED ANNUAL HEATING & COOLING COST	ESTIMATED MONTHLY HEATING & COOLING COST ELECTRIC & GAS PROVIDER
Whitburn	2/14/2019	60	305	4093	504	\$42

FOR MORE INFORMATION, CONTACT:

Beverly Bradley

832-687-0172

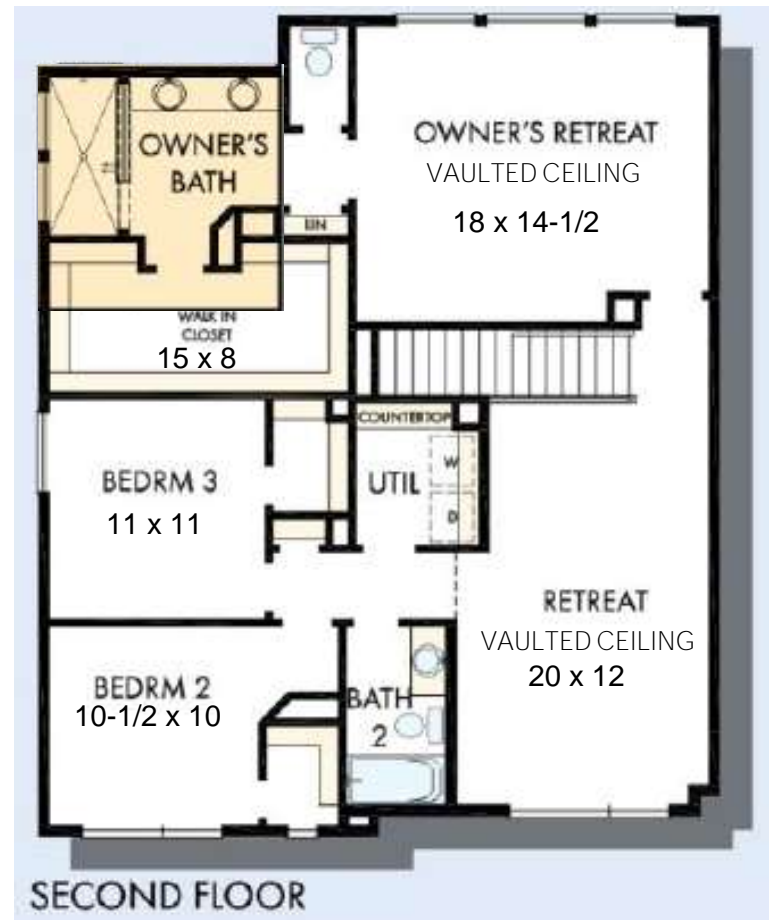
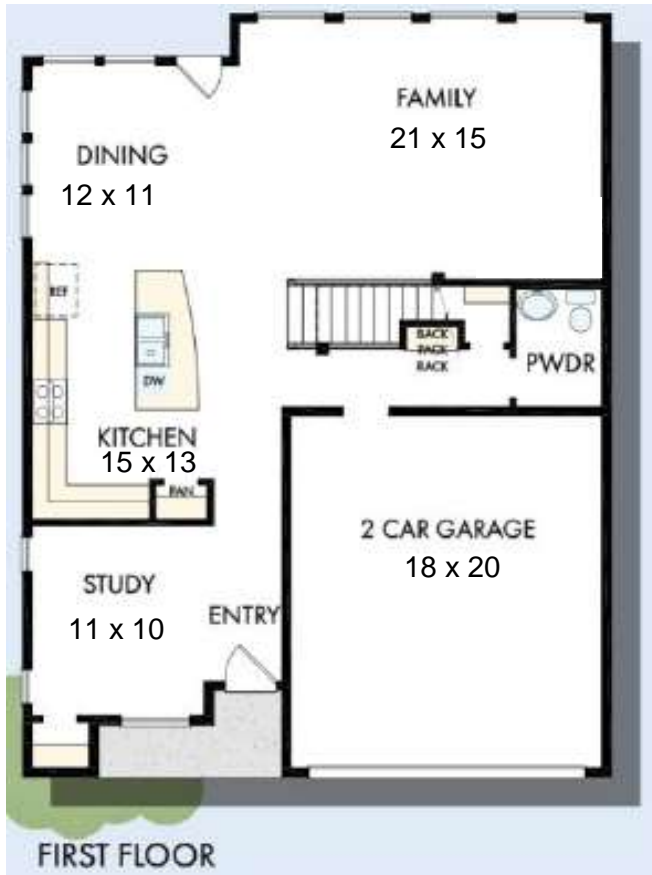
[bbradley@dwhomes.com](mailto:bbradley@dwhomes.com)



See a David Weekley Homes Sales Consultant for details. Prices, plans, dimensions, features, specifications, materials, and availability of homes or communities are subject to change without notice or obligation. Illustrations are artist's depictions only and may differ from completed improvements. Copyright © 2018 David Weekley Homes - All Rights Reserved. 290837 Phoenix, AZ (PHXW102034)



# THE WHITBURN



CENTRAL LIVING  
by David Weekley Homes