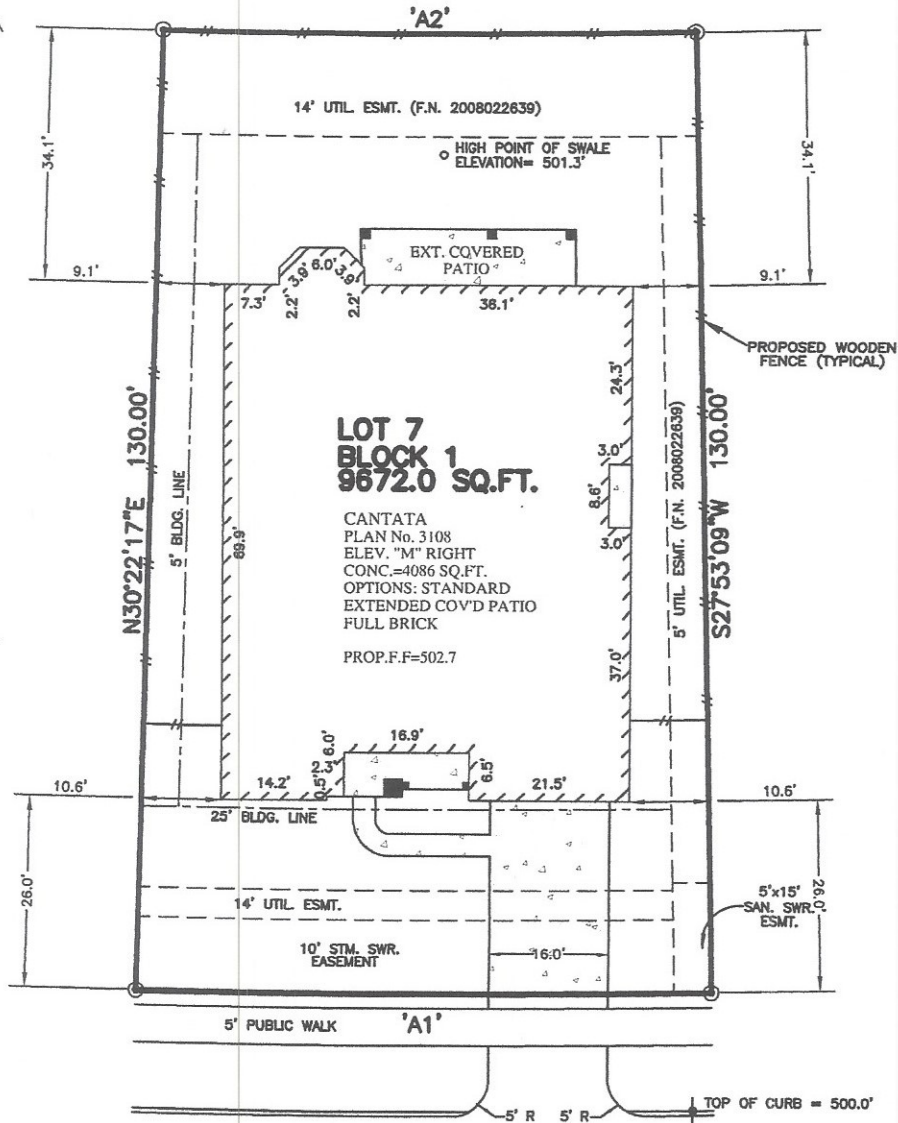


ARC TABLE			
ARC	LEN.	RAD.	CHRD. BRG.
'A1'	77.22'	1780.00'	N60°52'17"W
'A2'	71.58'	1650.00'	S60°52'17"E



**21322  
WINDING PATH WAY  
(60' R.O.W.)  
28' CONCRETE PAVEMENT**

**NOTES:**

1. ALL BEARINGS SHOWN HEREON ARE BASED ON THE RECORDED PLAT.
2. THIS PLOT PLAN WAS PREPARED WITHOUT BENEFIT OF A TITLE REPORT. THERE MAY BE EASEMENTS, BUILDING LINES & OTHER MATTERS OF RECORD NOT SHOWN HEREON. SURVEYOR OR ALLPOINTS SERVICES CORP. IS NOT LIABLE FOR ANY DAMAGES THAT MAY INCUR IN ANY EVENT THE BUILDER BUILDS ANY IMPROVEMENTS CLOSER THAN 5.0' OR WITHIN AN EASEMENT.

APPROX. LOT COVERAGE: 46.23 %

FENCE: 279.0 LINEAR FT.  
FRONT SOD: 388 SQ. YD.  
BACK SOD: 264 SQ. YD.  
APPROX. SQ. FT. OF FLATWORK:  
4" PAVING: 902 SQ. FT.  
6" PAVING: 164 SQ. FT.  
A/C PAD: 9 SQ. FT.

**PLOT PLAN**  
SCALE: 1 = 20'

©2010, ALLPOINTS SERVICES CORP., ALL RIGHTS RESERVED

FOR: RYLAND HOMES  
ADDRESS:  
21322 WINDING PATH WAY  
ALLPOINTS JOB #: RH26544 JB  
G.F.:



**ALLPOINTS  
SERVICES CORP.**  
PHONE: 713-468-7707  
FAX: 713-827-1861

**LOT 7, BLOCK 1,  
LONG MEADOW FARMS, SECTION 21,  
PLAT No. 20070223, PLAT RECORDS,  
FORT BEND COUNTY, TEXAS**

ISSUE DATE: 6/16/2010  
ISSUE DATE: 4/20/2010

**RYLAND  
HOMES®**

ALLPOINTS SERVICES CORP. COMMERCIAL/BUILDER DIVISION 1515 WITTE ROAD HOUSTON, TEXAS 77080