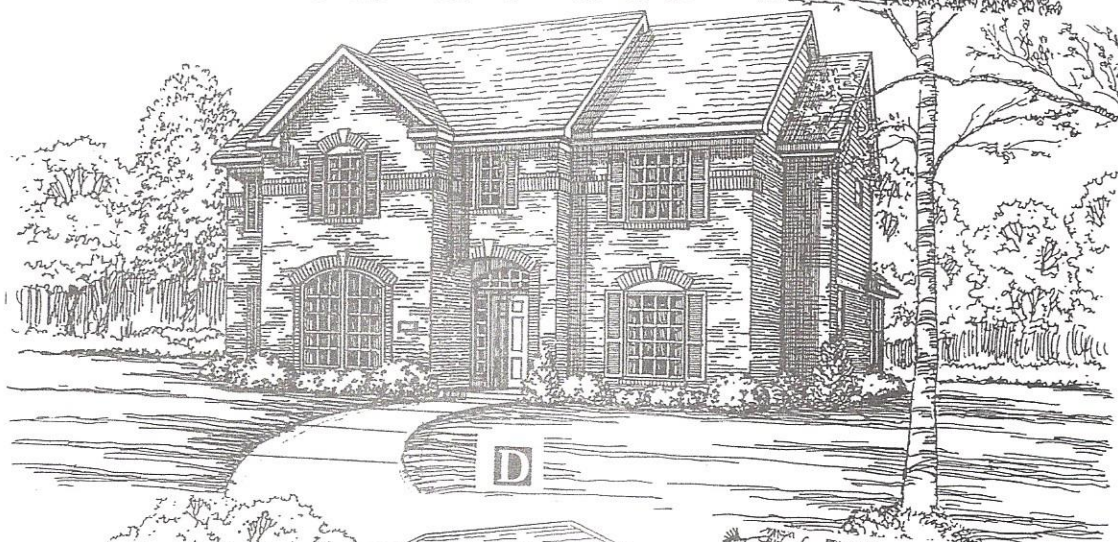
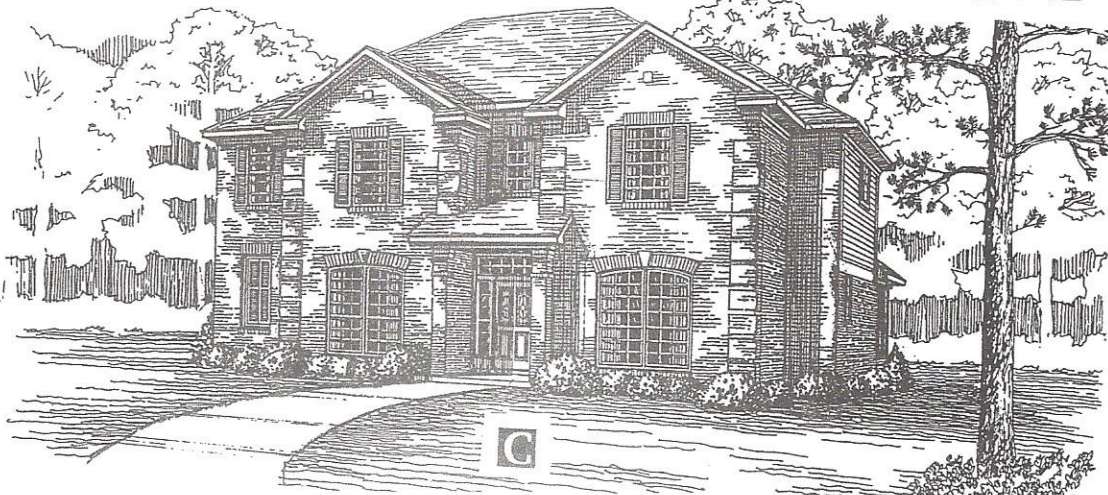
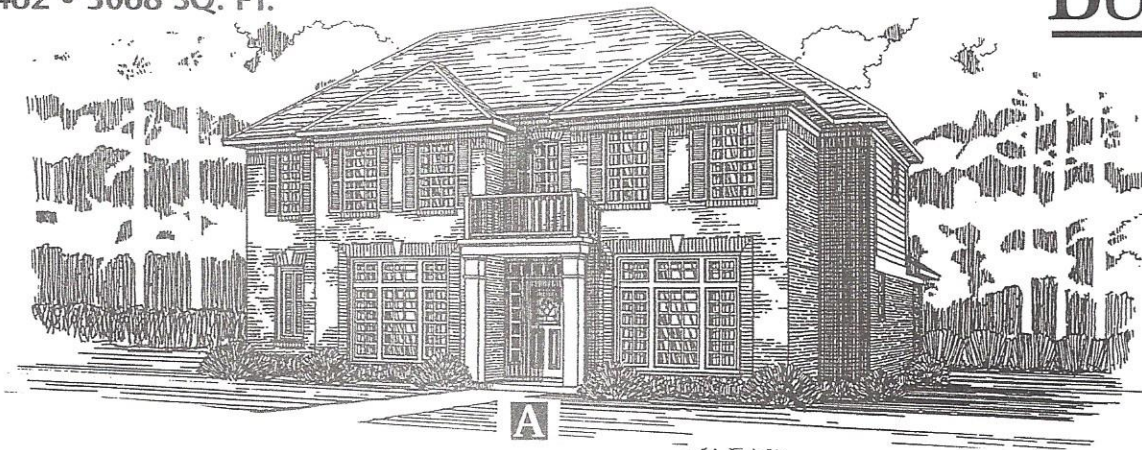
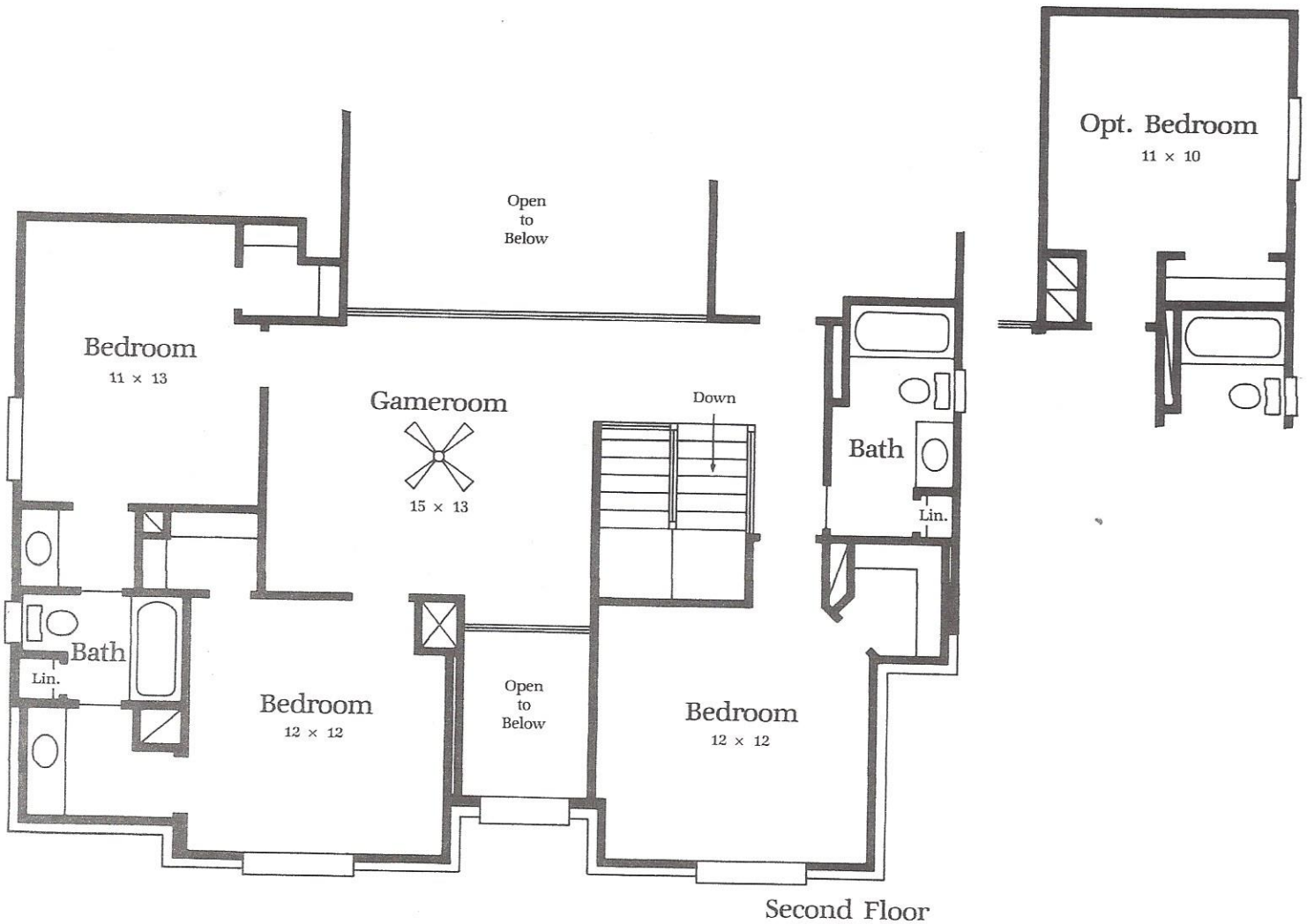


LOUISVILLE

PLAN 462 • 3068 SQ. FT.

VILLAGE BUILDERS

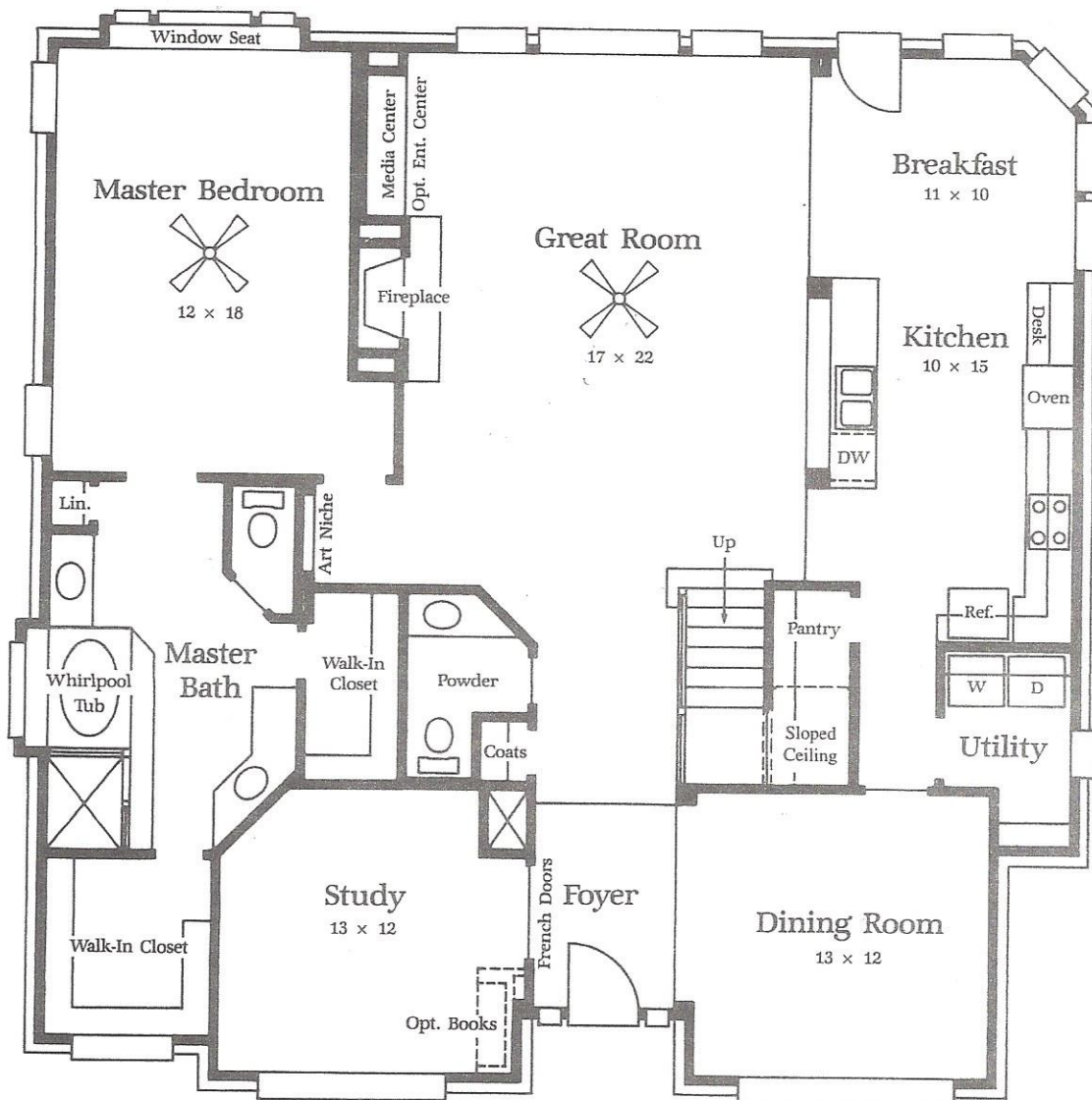




LOUISVILLE

PLAN 462 • 3068 SQ. FT.

- Sensational two-story Great Room with unique sloped ceiling, architectural windows and media center.
- Gourmet kitchen with large island, walk-in pantry and desk with bookshelves, is open to the great room.
- Study with French doors is a standard feature of this home with ability to add optional bookshelves.
- Spacious master suite with window seat, his and hers walk-in closets and make-up desk.
- Optional fifth bedroom upstairs for growing families.



First Floor



Window placement, roof line and porches may vary by elevation. Square footage and room dimensions are approximate. Variances in square footage may occur in different elevations or when different exterior materials are used. Plans, specifications and special features are subject to change without notice.

