

Georgian with Optional 4th Floor with Roof Deck



Marseilles with Optional 4th Floor with Roof Deck



DRAFT

Toll Brothers
America's Luxury Home Builder®

SYDNEY | Exterior Designs

THE SYDNEY

DRAFT



Marseilles

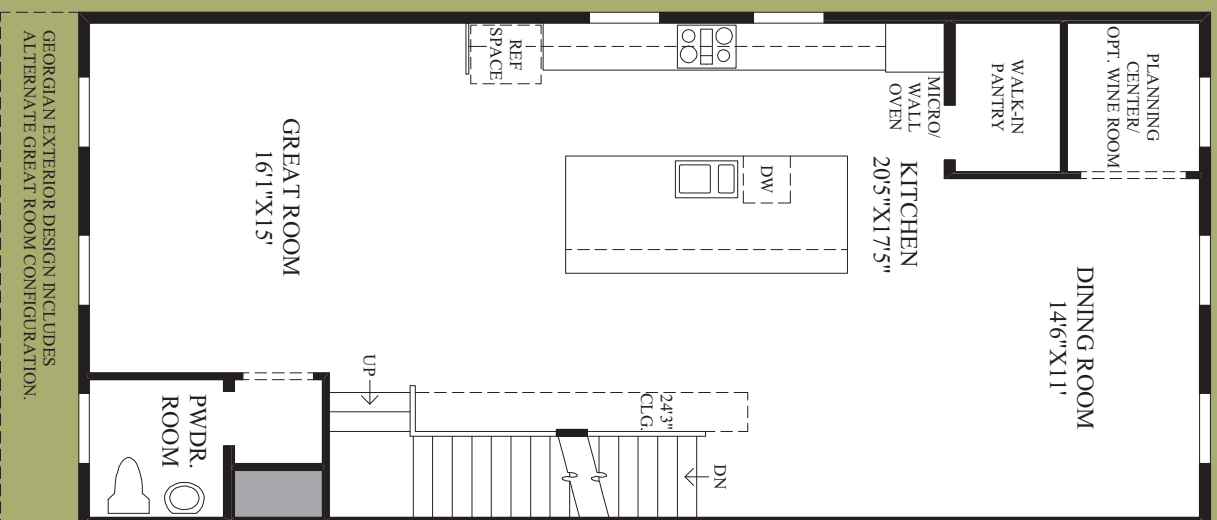


Georgian

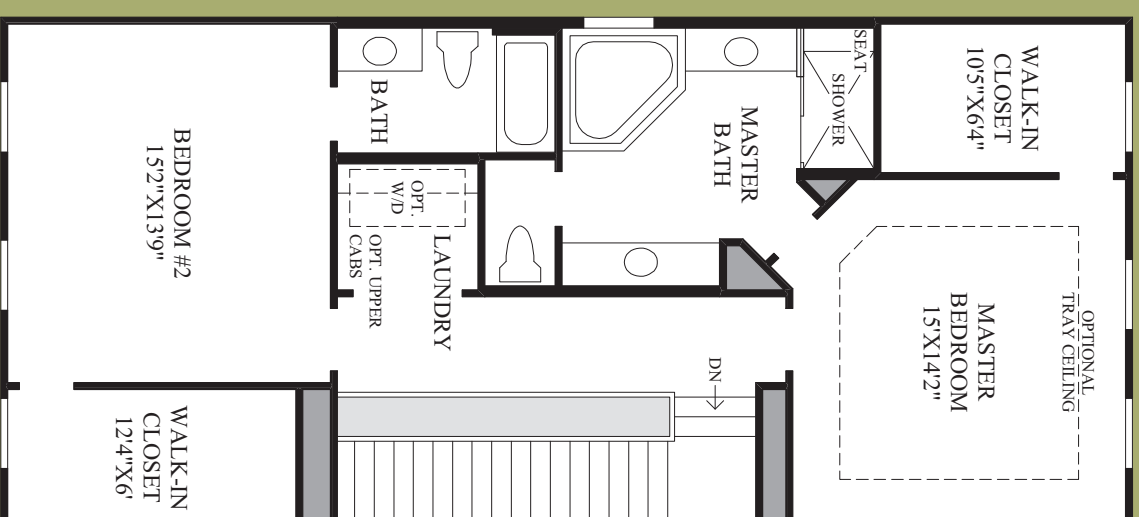


First Floor

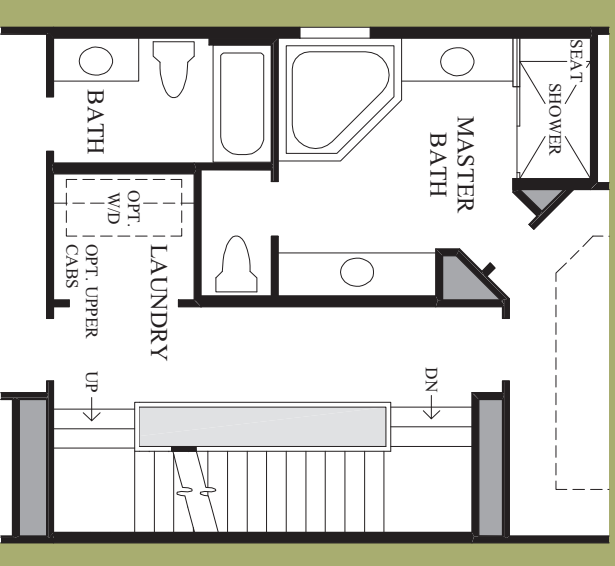
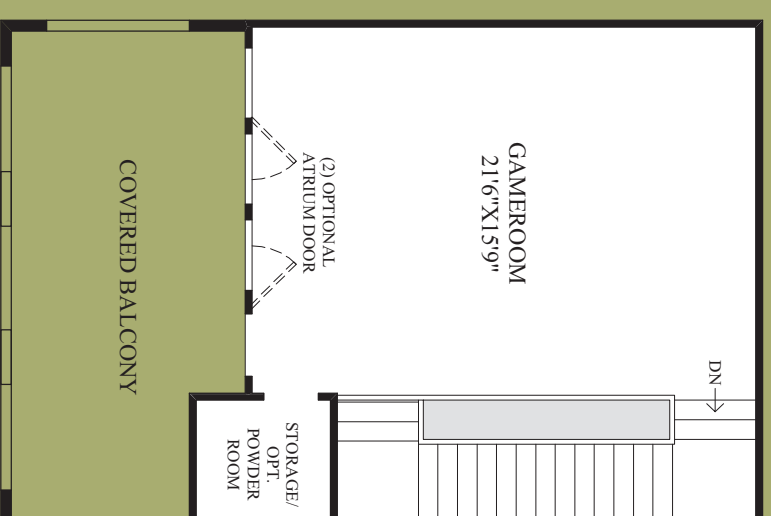
MARSELLLES EXTERIOR DESIGN SHOWN



Second Floor



Third Floor



THE SYDNEY HIGHLIGHTS

- A welcoming covered entry opens to a warm and inviting foyer that proudly offers a unique staircase, leading guests to the primary living spaces on the second floor.
- Ideal for preparing even the largest of family dinners is the expansive kitchen which boasts an huge center island with a breakfast bar, a walk-in pantry, and an adjacent dining room.
- Open to the kitchen is the remarkable great room that is large in size and accentuated by a lovely window arrangement that fills the space with natural light.
- Highlighting the sensational master bedroom is a spa-like master bath which offers dual vanities, a private water closet, a corner soaking tub, and a luxurious shower with a seat.
- Additional features of this stunning home include an appealing first-floor bedroom, plenty of storage, a favorable laundry location, a convenient planning center, and a marvellous 12' ceiling height throughout the main floor.

DRAFT

DRAFT