

SUBJECT

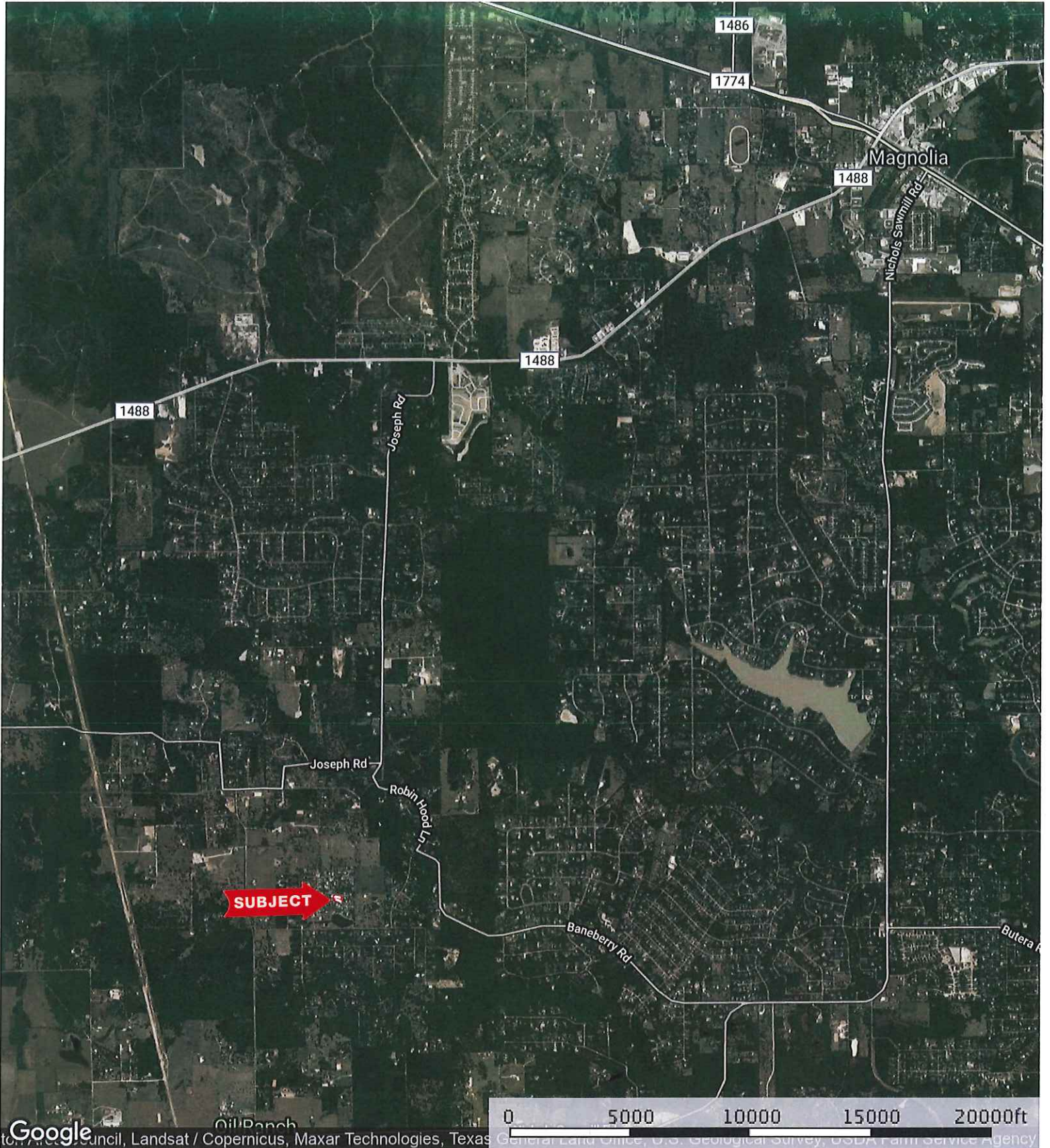
New Hwy 290

FM 359

SHARP


SHARP

25244 Winding Way
Waller County, Texas, AC +/-

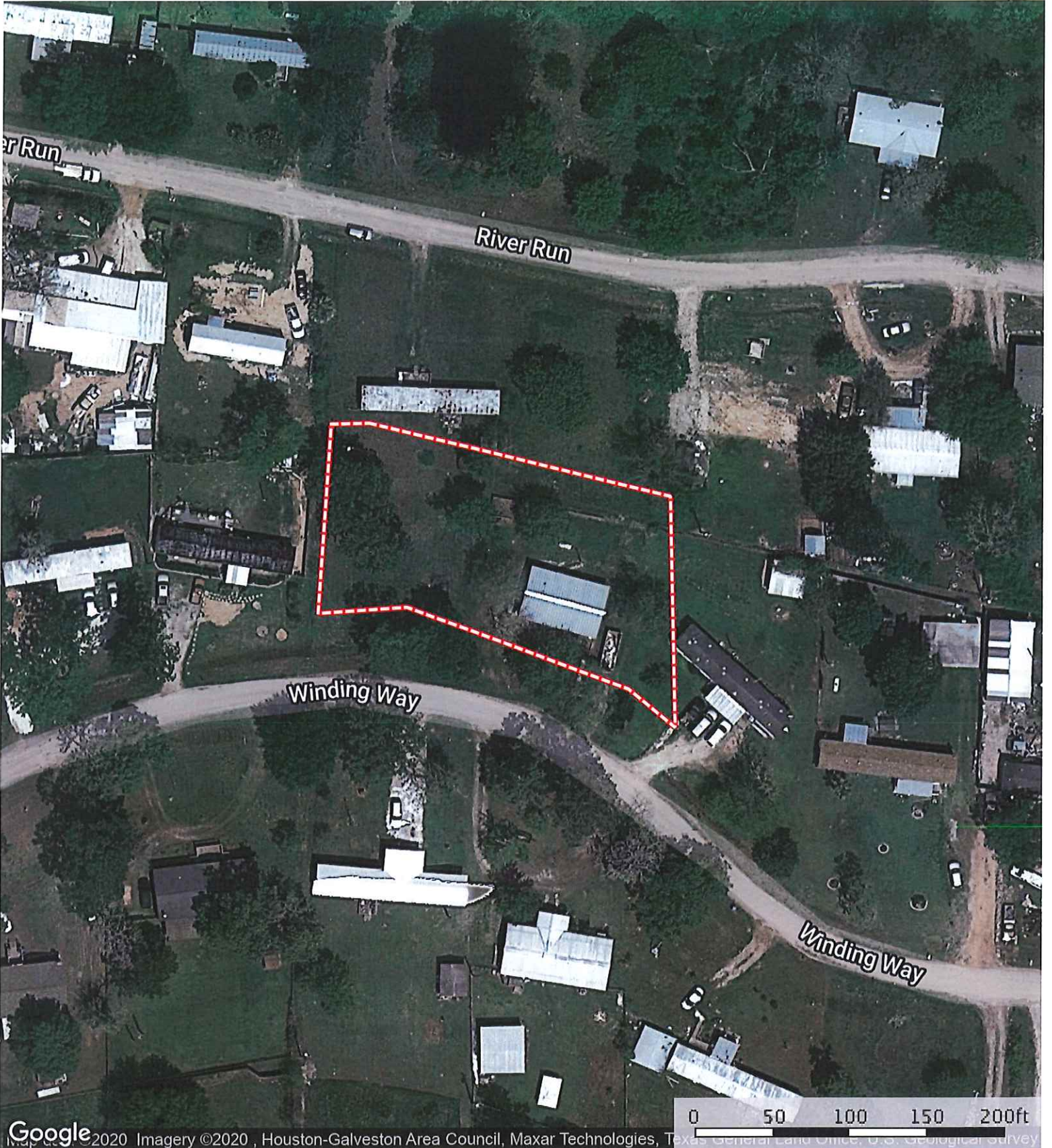


Google Oil Ranch Council, Landsat / Copernicus, Maxar Technologies, Texas General Land Office, U.S. Geological Survey, USDA Farm Service Agency


 Boundary

 The information contained herein was obtained from sources deemed to be reliable. MapRight Services makes no warranties or guarantees as to the completeness or accuracy thereof.

25244 Winding Way
Waller County, Texas, AC +/-



 Boundary

 The information contained herein was obtained from sources deemed to be reliable. MapRight Services makes no warranties or guarantees as to the completeness or accuracy thereof.

25244 Winding Way
Waller County, Texas, AC +/-



- Boundary
- 100 Year Floodplain
- 500 Year Floodplain
- Floodway
- Special
- Unmapped/ Not