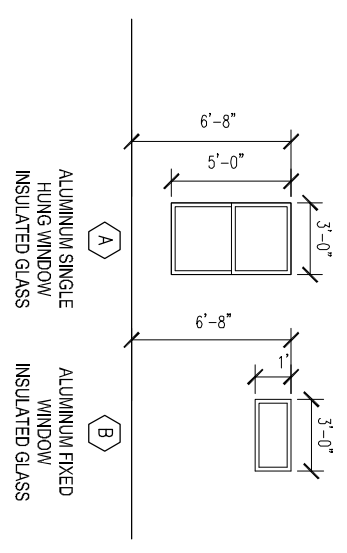


1 3/4" SOLID CORE EXTERIOR DOOR
 1 3/4" SOLID CORE EXTERIOR DOOR
 1 3/8" H.C. MASONITE INTERIOR DOOR
 1 3/8" H.C. MASONITE INTERIOR DOOR
 1 3/8" H.C. MASONITE INTERIOR DOOR

6 DOOR TYPES

1/8"=1'-0"

ALL EXTERIOR DOORS SHALL MAINTAIN THE FOLLOWING EFFICIENCY REQUIREMENTS:
 1. MAXIMUM U-FACTOR = .35
 2. AIR INFILTRATION (SLIDERS) = 3 CFM/SQ FT
 3. AIR INFILTRATION (SWINGING) = 5 CFM/SQ FT

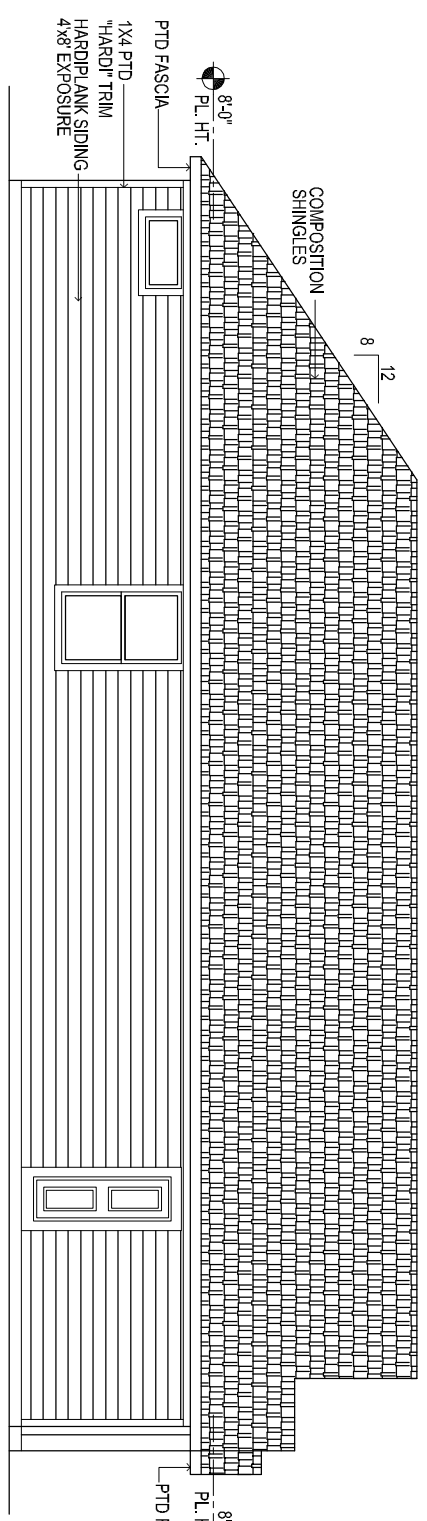


ALUMINUM SINGLE HUNG WINDOW INSULATED GLASS
 ALUMINUM FIXED WINDOW INSULATED GLASS

5 WINDOW TYPES

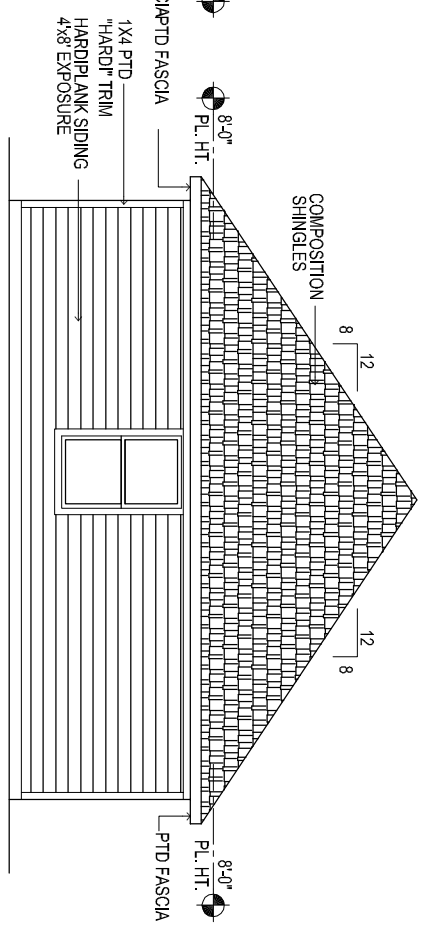
1/8"=1'-0"

ALL WINDOWS SHALL MAINTAIN THE FOLLOWING EFFICIENCY REQUIREMENTS:
 1. MAXIMUM U-FACTOR = .75
 2. MAXIMUM SHGC = .40
 3. MAXIMUM AIR INFILTRATION = 3 CFM/SQ FT



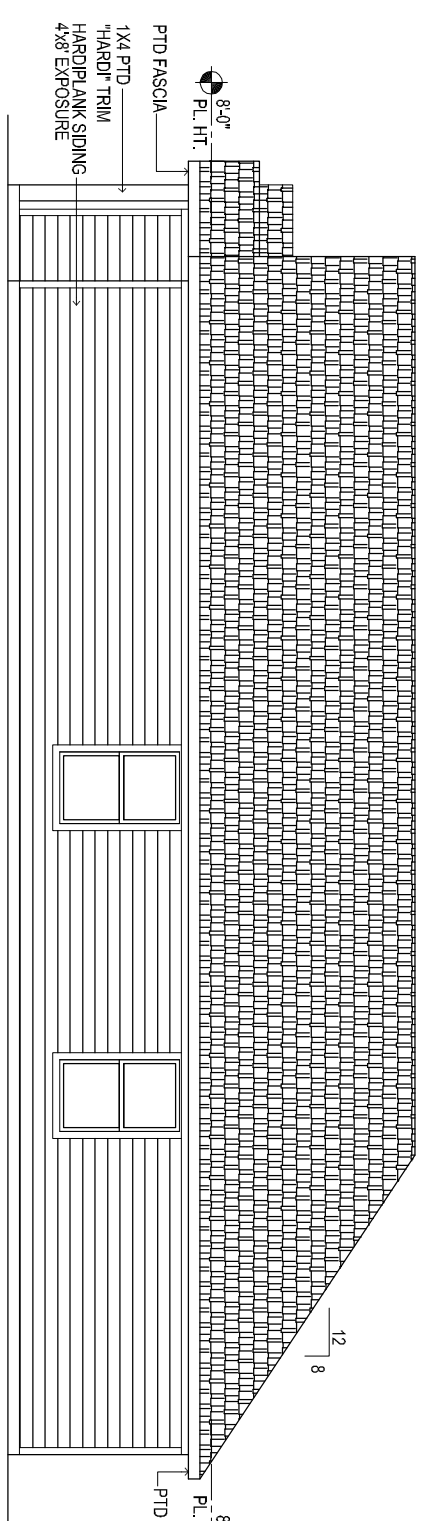
4 LEFT ELEVATION

1/8"=1'-0"



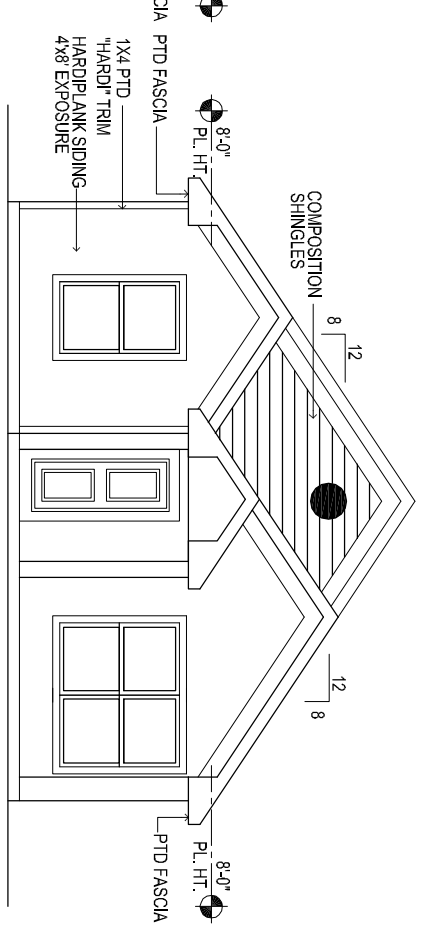
3 BACK ELEVATION

1/8"=1'-0"



2 RIGHT ELEVATION

1/8"=1'-0"



1 FRONT ELEVATION

1/8"=1'-0"

PROJECT:

1516 UTAH ST
 BAYTOWN TX 77520

THIS PLAN AND THE DESIGN CONTAINED HEREIN ARE THE PROPERTY OF VIZION DESIGN AND MAY NOT BE REPRODUCED, COPIED, OR IN PART, WITHOUT PRIOR WRITTEN CONSENT FROM VIZION DESIGN.
 VIZION DESIGN URBANA STATION
 500 N. 859. WOODWAY
 BOX 1. 866.225.3000
 dli@viziondesign.com v1@vizionurbana.com



VIZION URBANA.COM

DATE:

09/08/19

SHEET TITLE:
 EXTERIOR ELEVATIONS
 WINDOWS & DOORS SCHEDULE
 SHEET NO.:

A3.0

