

This drawing is only a representation. Room sizes and square footages are approximate. Builder reserves the right to alter plans, specifications and materials.



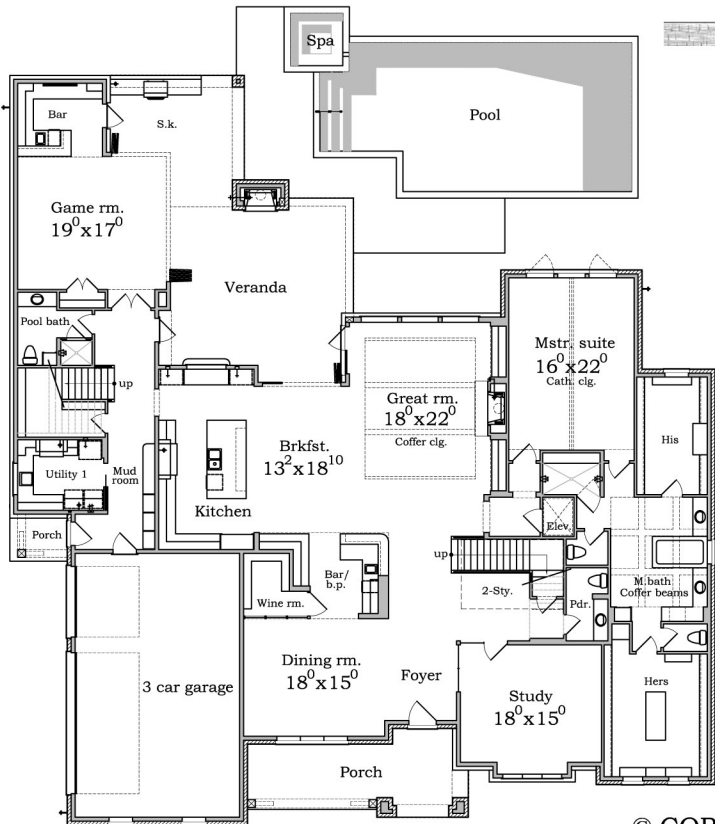
11706 Brandon Way

Approx. Living Area

First Floor	4,599 sq. ft.
Second Floor	2,844 sq. ft.
Total	7,443 sq. ft.

Perimeter 90'-0" x 95'-8"
Job No. 171117

First Floor Plan



Second Floor Plan

