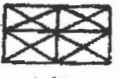
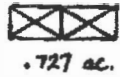


TOWERING OAKS



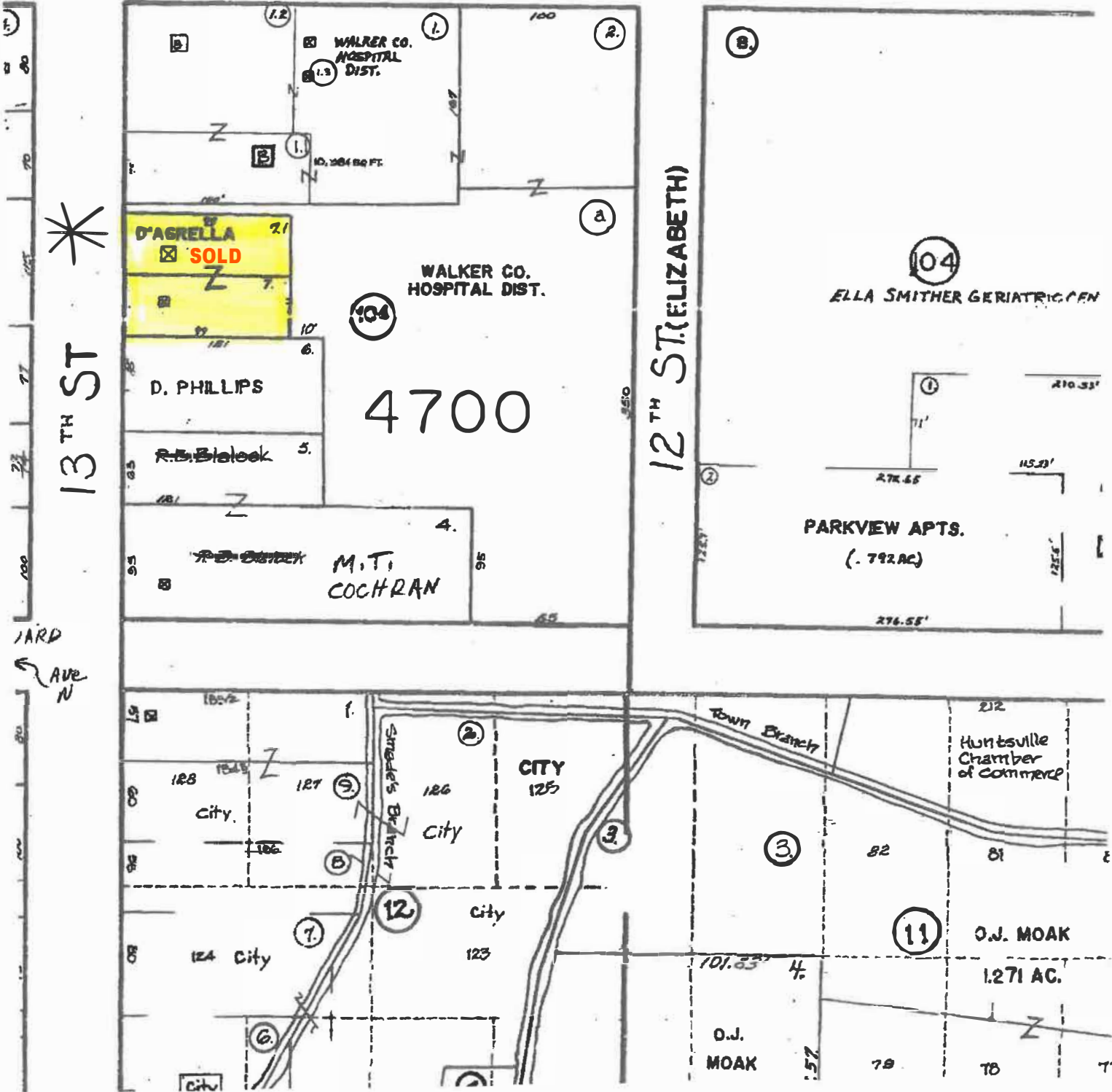
E.B. JENKINS
.705 AC.

CHARLES SMITHER JR.

SAM G. DOMINEY

.766 AC. 27
26
JIFFY LUBE

Ave O



13 TH ST

12 TH ST (ELIZABETH)

YARD
AVE N

4700

D'AGRELLA
SOLD

WALKER CO. HOSPITAL DIST.

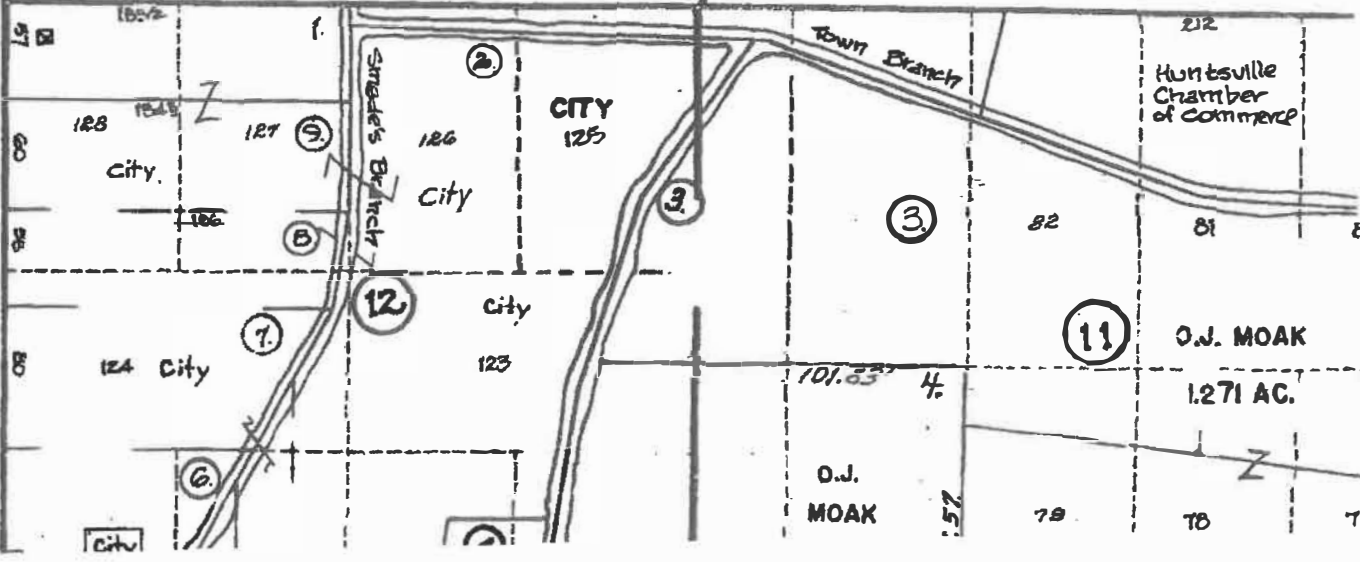
D. PHILLIPS

R.B. Stalock

M.T. COCHRAN

ELLA SMITHER GERIATRIC CEN

PARKVIEW APTS.
(.792 AC)



Huntsville Chamber of Commerce

O.J. MOAK

1.271 AC.

O.J. MOAK