

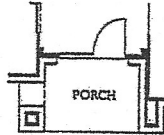
# TRENDMAKER HOMES.COM SMART FLOOR PLANS

5710 Evening Oaks Ln  
Fulshear, TX 77441

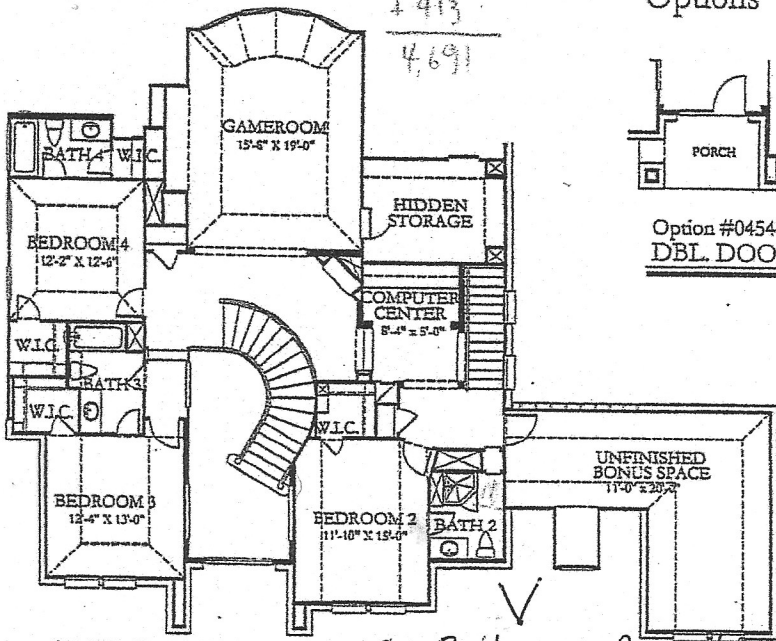
PLAN A170 - 4278 sq.ft.

+ 413  
4,691

Options

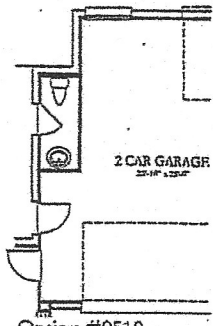


Option #0454  
DBL. DOOR



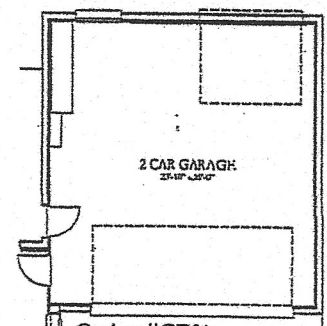
SECOND FLOOR

*This Bathroom Remodeled 2015*

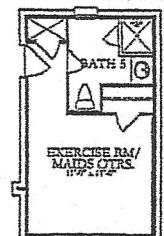


Option #0519  
GARAGE 1/2 BATH W/  
5 FT. GARAGE EXT.

From 2 Car Garage

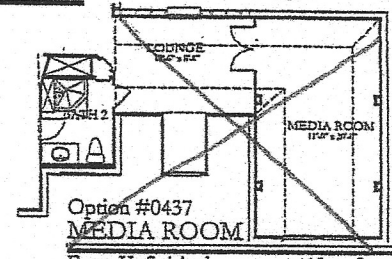


Option #GE01  
5 FT. GARAGE EXT.  
From 2 Car Garage



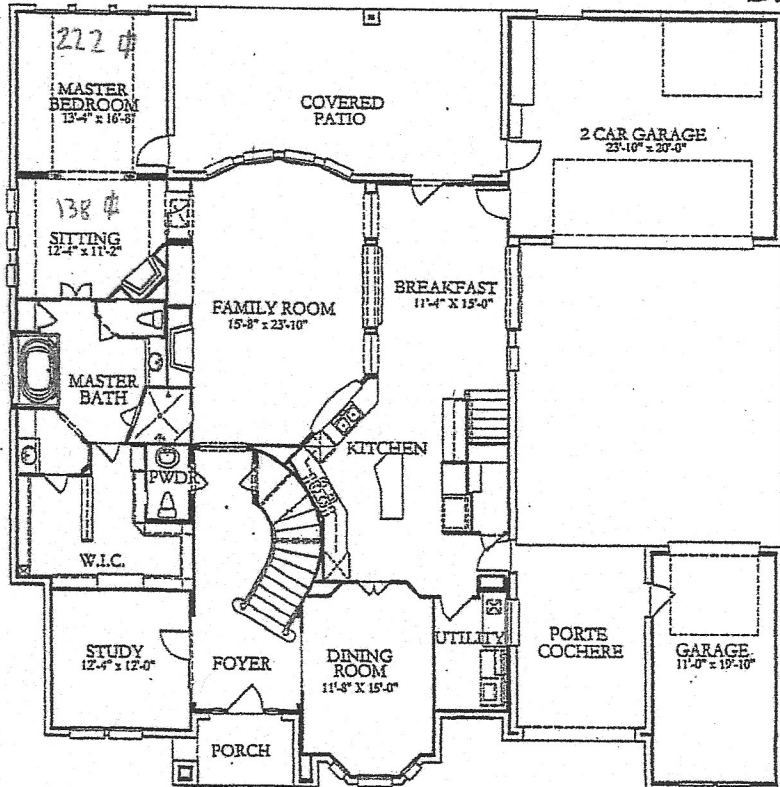
Option #0149  
EXERCISE RM./  
MAIDS QTRS.  
W/BATH 5

From 1-Car Garage 242 sq.ft.



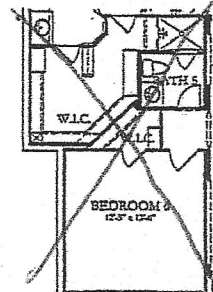
Option #0437  
MEDIA ROOM

From Unfinished Bonus Space +413 sq.ft.



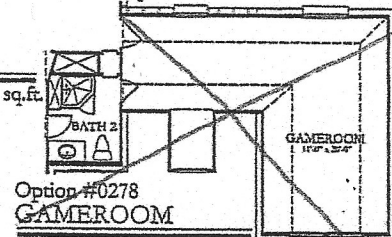
FIRST FLOOR

Master BR = 222 + 138 = 360 sq



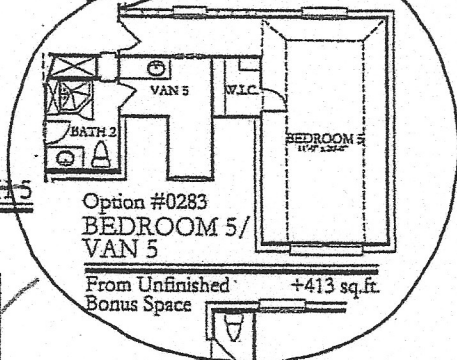
Option #0339  
BEDROOM 6/BATH 5

From Study



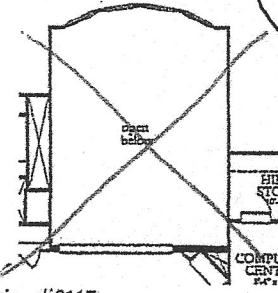
Option #0278  
GAMEROOM

From Unfinished Bonus Space +413 sq.ft.



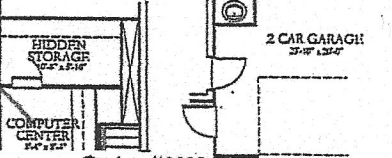
Option #0283  
BEDROOM 5/  
VAN 5

From Unfinished Bonus Space +413 sq.ft.



Option #0117  
DELETE GAMEROOM

From Family Room -330 sq.ft.



Option #0098  
1/2 BATH GARAGE

From 2 Car Garage

In an effort to constantly improve our plans, homes started in the future and some recently started homes under construction may have substantial differences from existing Trendmaker homes, including models, that may already be built in communities. Square footage is approximate and may vary per elevation.

