

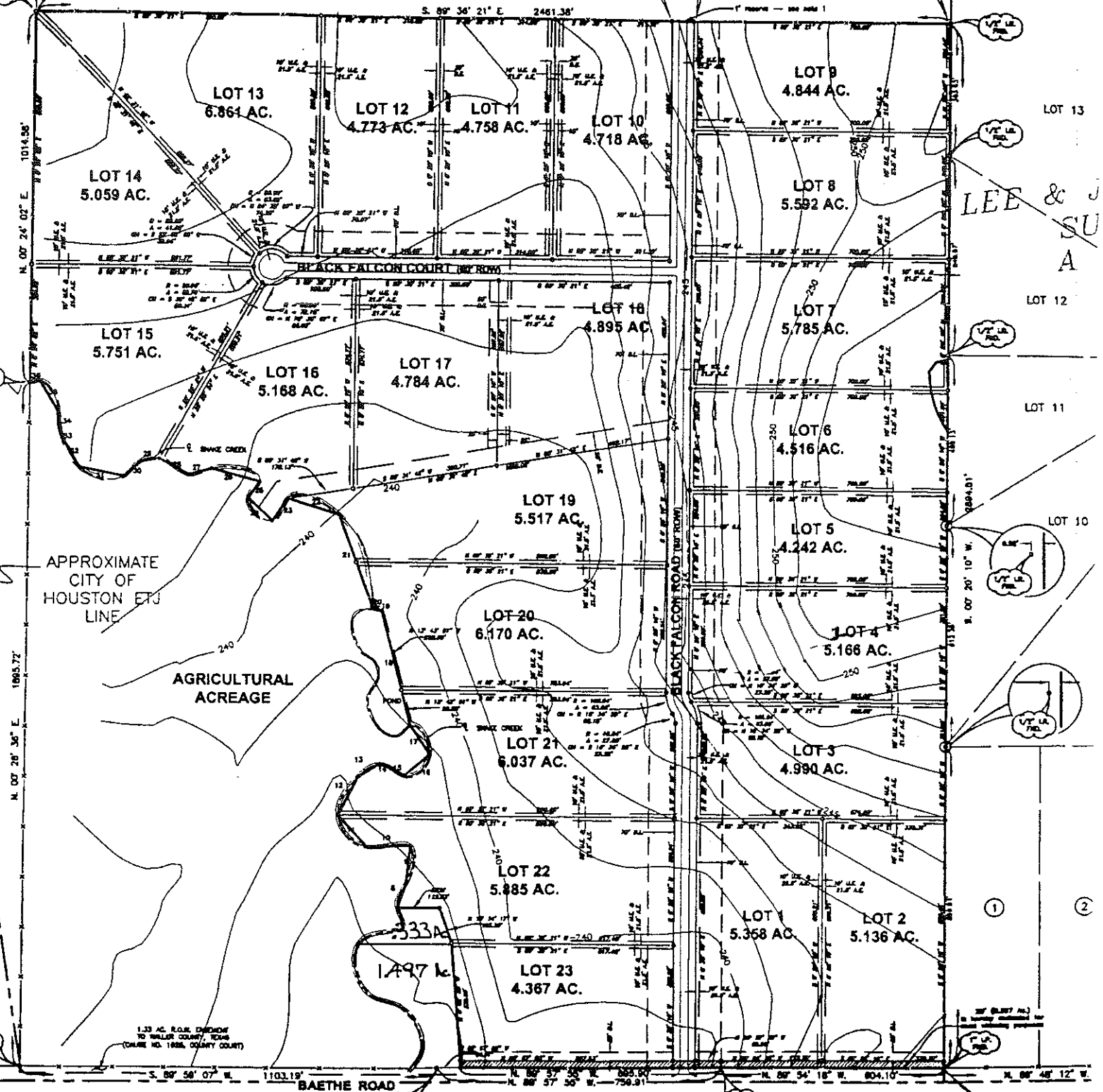
RESIDUE OF
CALLED 328,303 AC.
VOL. 688, PG. 62
H.E.A.P.A.

PT. NO. 200
GRID
N=13,928,872.86
E= 2,831,934.86
SURFACE
N=13,928,873.08
E= 2,831,934.06

PT. NO. 201
GRID
N=13,928,932.77
E= 2,833,836.05
SURFACE
N=13,928,932.50
E= 2,833,834.98

PT. NO. 202
GRID
N=13,928,234.36
E= 2,833,884.86
SURFACE
N=13,928,234.58
E= 2,833,884.82

PT. NO. 203
GRID
N=13,928,058.18
E= 2,834,384.47
SURFACE
N=13,928,058.41
E= 2,834,384.46

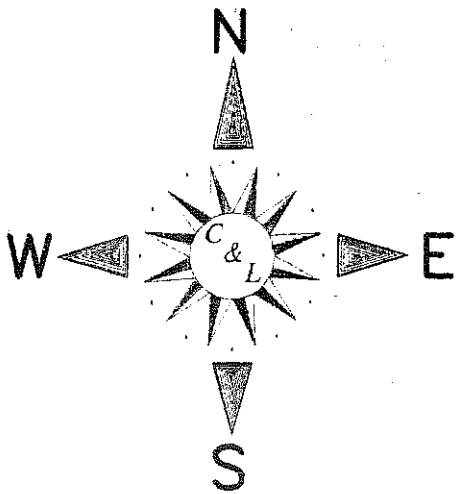


POLLY PERRY LEAGUE A - 236

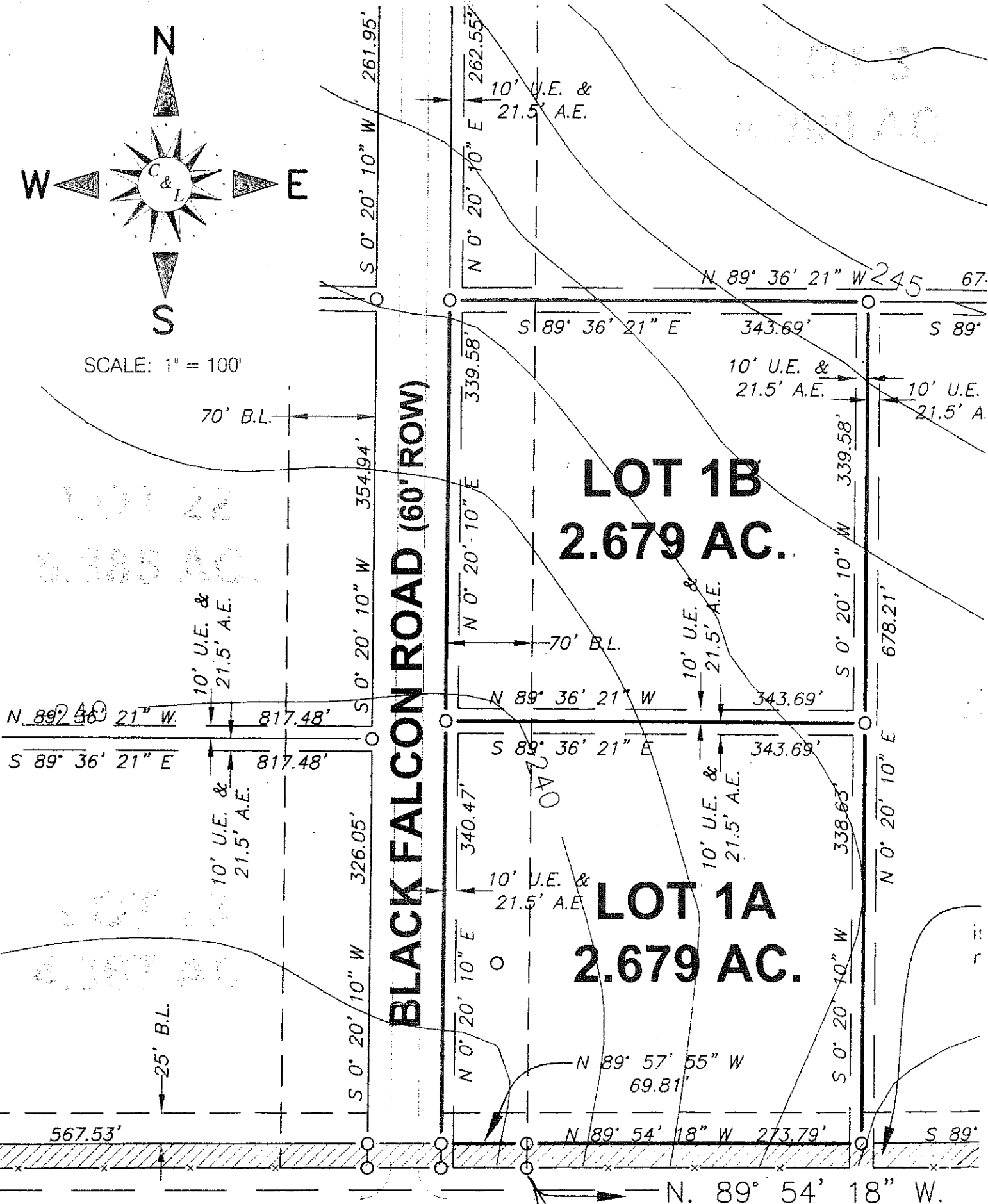
PT. NO. 205
GRID
N=13,928,040.82
E= 2,833,892.38
SURFACE
N=13,928,040.82
E= 2,833,892.32

PT. NO. 206
GRID
N=13,928,040.81
E= 2,834,198.81
SURFACE
N=13,928,040.81
E= 2,834,198.81

GRID COORDINATES BY
SURFACE COORDINATE
POSITION OF PT. NO.



SCALE: 1" = 100'

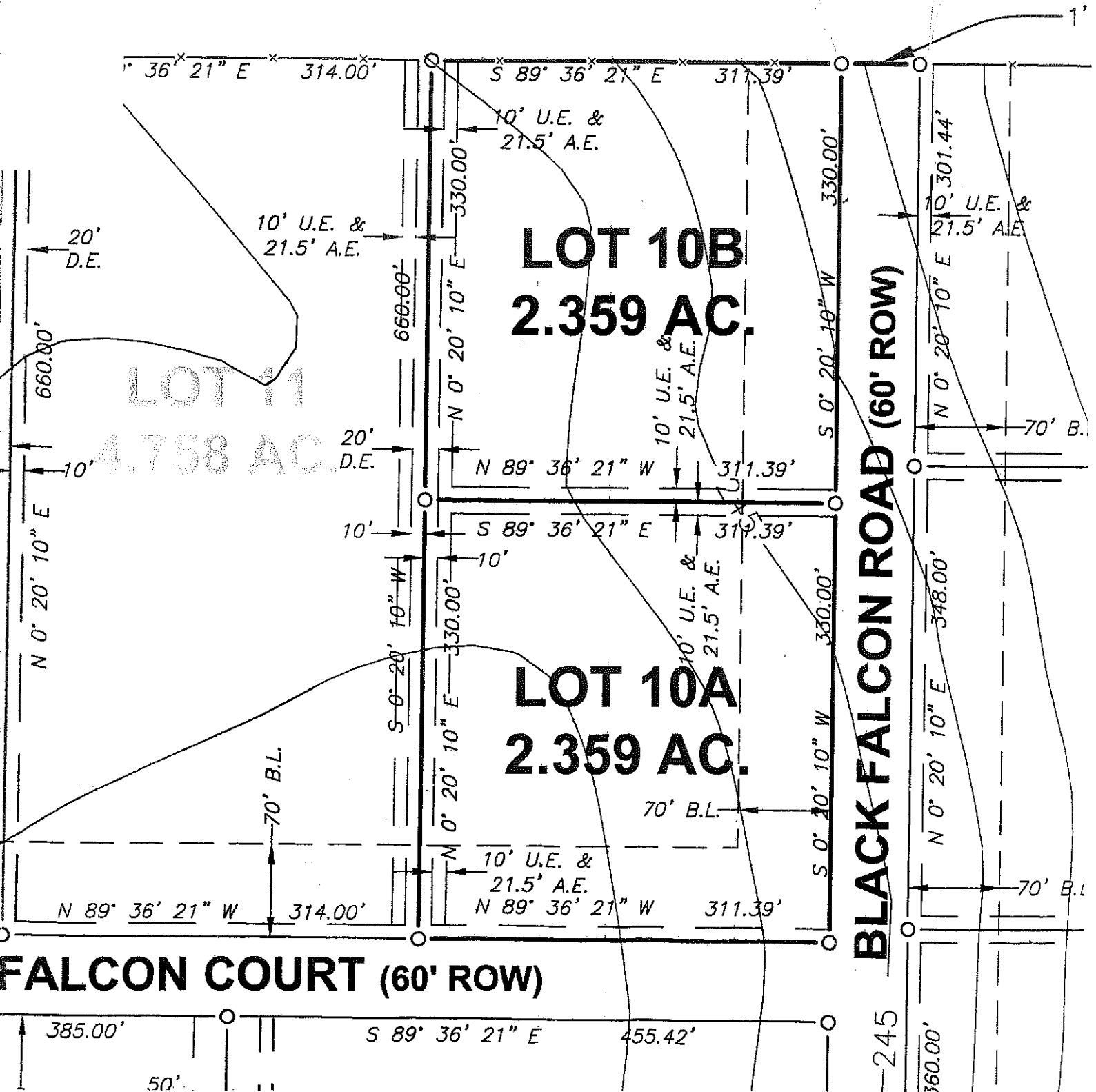


1/2" I.R.

RECORD OF
 AILED...
 VOL. 400...
 PAGE...

PL. NO. 201
 0390
 17-13,028.93
 01-1837.61

PL. NO. 201
 0390
 17-13,028.93
 01-1837.61



1'

70' B.L.

70' B.L.

70' B.L.

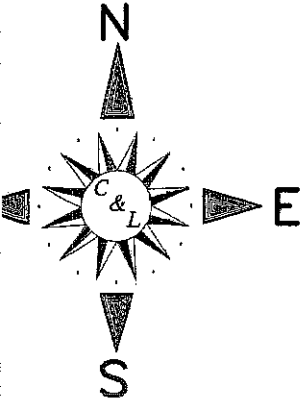
245

360.00'

50'

385.00'

S 89° 36' 21" E 455.42'



SCALE: 1" = 100'

LOT 21
6.037 AC.

LOT 22
6.025 AC.

LOT 23B
2.950 AC.

LOT 23A
2.950 AC.

BLACK FALCON ROAD (60' ROW)

BAETHE ROAD

N 89° 36' 21" W 896.69'
S 89° 36' 21" E 896.69'

N 18° 34' 19" W 103.20'

N 89° 36' 21" W - 240 592.76'

S 89° 36' 21" E 200.12'
S 89° 36' 21" E 392.64'
10' U.E. & 21.5' A.E.

N 89° 57' 55" W 64.01'
S 04° 02' 28" E 20.05'
N 89° 57' 55" W 174.89'

N 00° 20' 10" E 328.51'
N 00° 20' 10" W 328.51'
N 89° 57' 55" W 392.64'

S 0° 20' 10" W 354.94'

S 0° 20' 10" W 326.05'

N 0° 20' 10" E

N 0° 20' 10" E 680.08'

10' U. & 21.5'

N. 89° 57' 55" W. 695.90'

1/2" I.R. FND.

1/2" I.R. SET

PLAT NO. 205
L&P
N = 14,908,940.10
E = 14,930,880.00

SIGNED
N = 15,345,040.00
E = 14,933,880.00