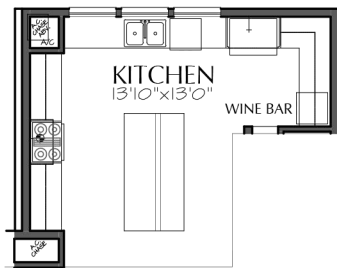
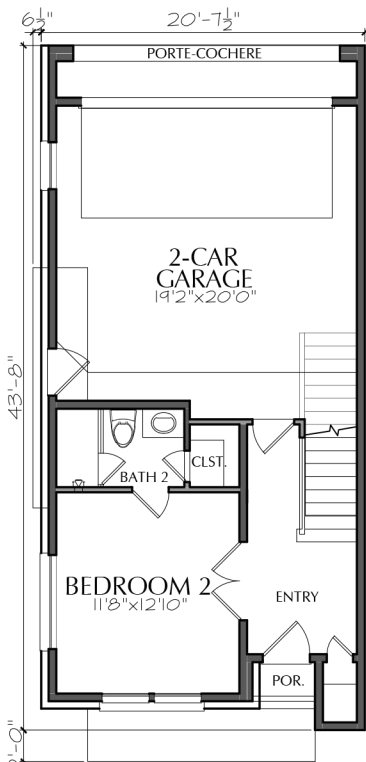




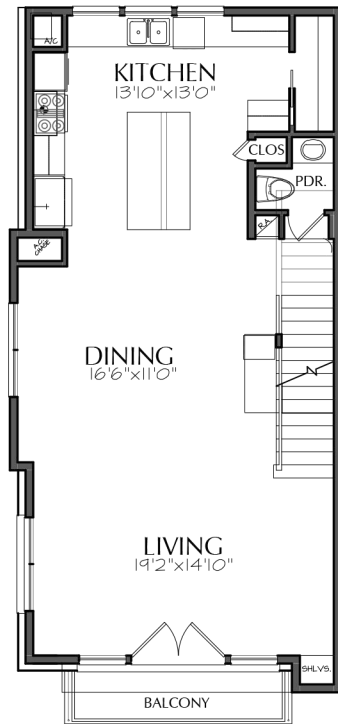
JOB#:	E7012 A1.1R
LEVEL ONE:	385
LEVEL TWO:	885
LEVEL THREE:	905
STAIR TOWER:	39
TOTAL LIVING:	2175
WIDTH:	20'-7 1/2"
DEPTH:	43'-8"
1st FLOOR CLG:	9'-1" U.O.N.
2nd FLOOR CLG:	11'-1" U.O.N.
3rd FLOOR CLG:	10'-1" U.O.N.
4th FLOOR CLG:	8'-1" U.O.N.



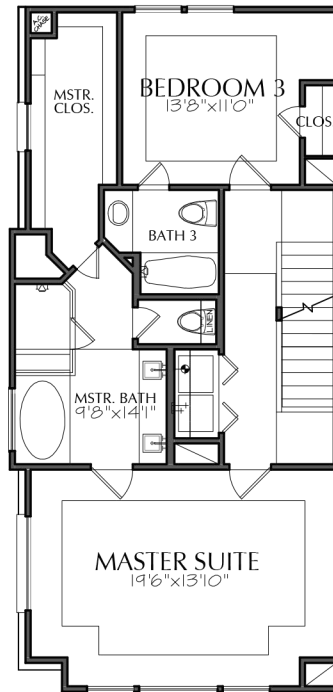
OPTION AT KITCHEN



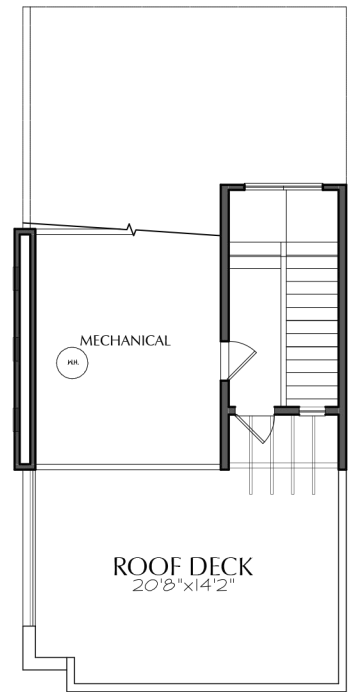
FIRST FLOOR



SECOND FLOOR



THIRD FLOOR



STAIR TOWER