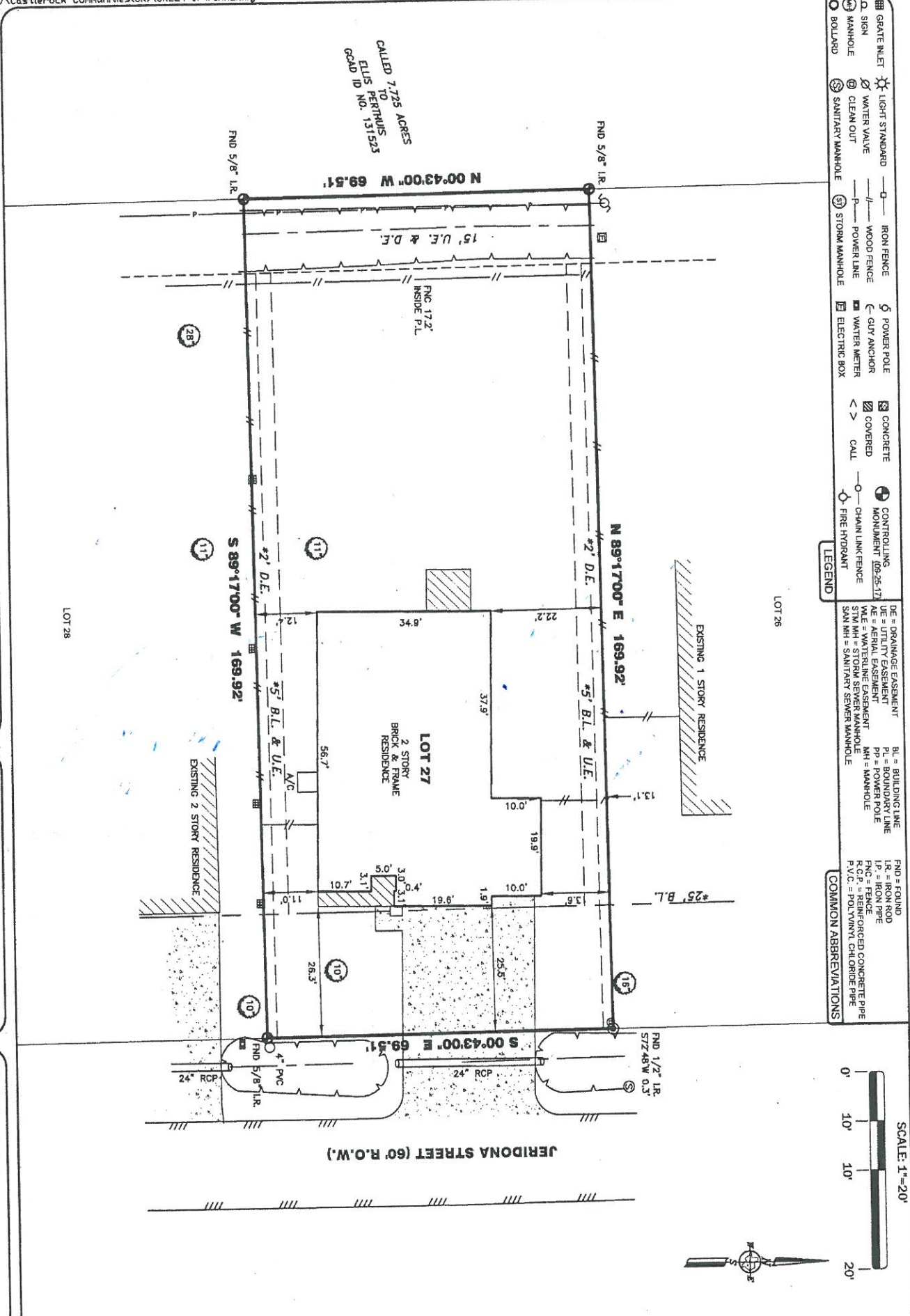


TRI-TECH
SURVEYING COMPANY, L.P.
 18401 WESTOPPE DR.,
 HOUSTON, TEXAS 77072
 PH: 713.657.0800
 TSP: 713.657.0800
 www.tritech.com
 TSP: 713.657.0800

2108 JERIDONA STREET
 LA MARQUE, GALVESTON COUNTY, TEXAS 77568

FINAL SURVEY
 LOT 27
 BLOCK N/A
 SUBDIVISION REPLAY OF BARNES SUBDIVISION
 RECORDING PLAN NO. 200803 GALVESTON COUNTY, TEXAS
 BORROWER N/A
 TITLE CO. STEWART TITLE GUARANTY COMPANY
 G.F. NO. 1816709900
 G.F. EFFECTIVE DATE: 03-23-18
 SURVEYED FOR: CASTLEROCK COMMUNITIES

JOB NO. CR224-17
 ENCL. STUDY: N/A
 CALC BY: M. COX
 DRAWN BY: CAMELIA
 CHECKED BY: D. SULLIVAN
 BEARING BASE: REFERRED TO PLAT NORTH
 FIELD CREW (A): J. VASQUEZ
 FIELD CREW (B):
 FIELD DATE: 09-26-17
 COORD. VER: ADESK CAD 2015



LEGEND

- GRATE INLET
- SIGN
- MANHOLE
- BOLLARD
- LIGHT STANDARD
- WATER VALVE
- CLEAN OUT
- SANITARY MANHOLE
- IRON FENCE
- WOOD FENCE
- POWER LINE
- STORM MANHOLE
- POWER HOLE
- CUR ANCHOR
- WATER METER
- ELECTRIC BOX
- CONCRETE
- COVERED
- CALL
- CONTROLLING MONUMENT (09-25-17)
- CHAIN LINK FENCE
- FIRE HYDRANT
- DE = DRAINAGE EASEMENT
- UE = UTILITY EASEMENT
- AE = AERIAL EASEMENT
- WLE = WATERLINE EASEMENT
- STM MH = STORM SEWER MANHOLE
- SAN MH = SANITARY SEWER MANHOLE
- BL = BUILDING LINE
- PL = BOUNDARY LINE
- IP = IRON PIPE
- PP = POWER POLE
- MH = MANHOLE
- LR = IRON ROD
- F.P. = IRON PIPE
- F.C. = FENCE
- R.C.P. = RIBBED CONCRETE PIPE
- P.V.C. = POLYVINYL CHLORIDE PIPE

COMMON ABBREVIATIONS