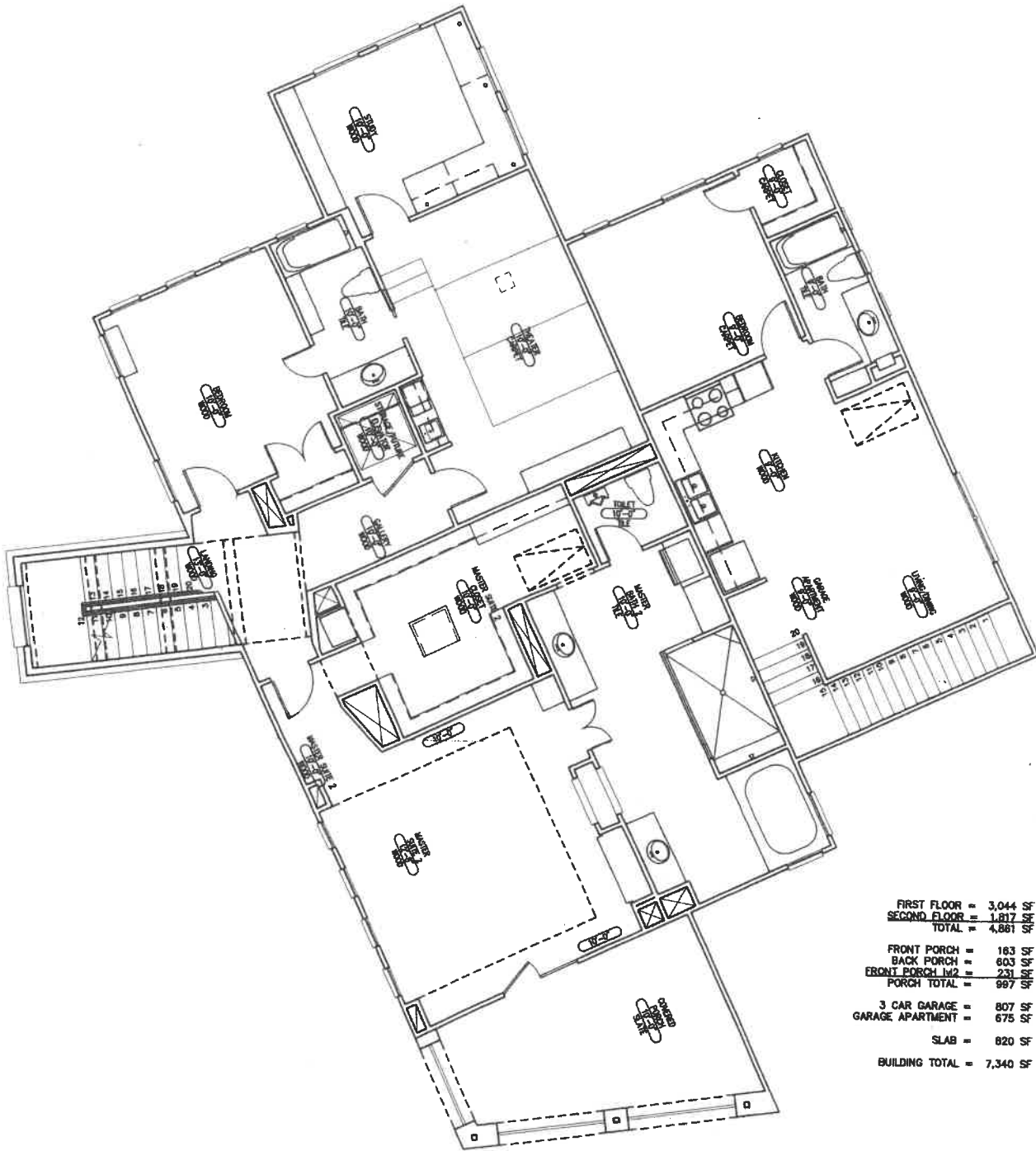


FIRST FLOOR	=	3,044 SF
SECOND FLOOR	=	1,817 SF
TOTAL	=	4,861 SF
FRONT PORCH	=	183 SF
BACK PORCH	=	603 SF
FRONT PORCH 1/2	=	231 SF
PORCH TOTAL	=	987 SF
3 CAR GARAGE	=	807 SF
GARAGE APARTMENT	=	675 SF
SLAB	=	820 SF
BUILDING TOTAL	=	7,340 SF



FIRST FLOOR	=	3,044	SF
SECOND FLOOR	=	1,817	SF
TOTAL	=	4,861	SF
FRONT PORCH	=	183	SF
BACK PORCH	=	803	SF
FRONT PORCH 1/2	=	231	SF
PORCH TOTAL	=	997	SF
3 CAR GARAGE	=	807	SF
GARAGE APARTMENT	=	675	SF
SLAB	=	820	SF
BUILDING TOTAL	=	7,340	SF