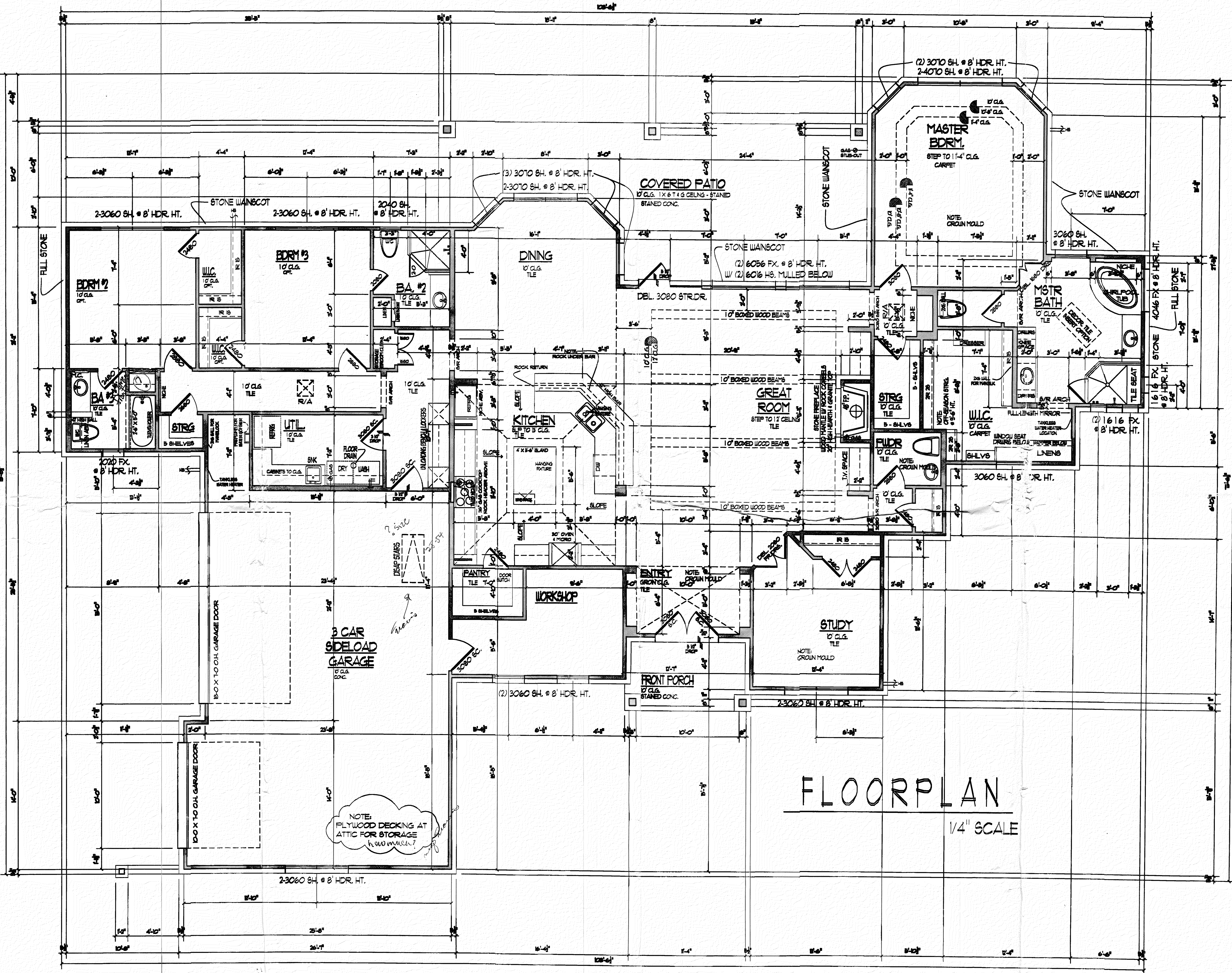


3,197 SQ.FT. MAIN HOUSE
 146 SQ.FT. SHOP
 3,343 SQ.FT. TOTAL LIVING

74 SQ.FT. FRONT PORCH
 937 SQ.FT. GARAGE
 483 SQ.FT. REAR PORCH



FLOORPLAN
 1/4" SCALE

Date	Revisions	By
1-9-01	1ST MEETING	FB
8-6-01	PRELIMINARY PLANS	FB
9-24-01	PLAN REVISIONS	FB
10-1-01	PRELIM ELEVATION	FB
11-8-01	CHECK SET TO ISSUE	FB
	REDLINES TO ISSUE	FB

COPYRIGHT 2001
 ANY REPRODUCTION OR TRANSLATION OF ALL OR ANY PART OF THIS WORK WITHOUT THE WRITTEN CONSENT OF P.S. DESIGNS, INC. IS UNLAWFUL. FOR ANY INFORMATION PLEASE CONTACT P.S. DESIGNS, INC.

P.S.
 DESIGNS, INC.

P.O. BOX 1663
 DRIPPING SPRING, TEXAS 78020
 OFFICE (937) 686-3478
 FAX (937) 684-9989

MORGAN RESIDENCE
 MYSTIC SHORES-PENINSULA
 202 SWIFT PLACE
 LOT # 1311, UNIT # 2

Mitchell
 Custom Homes

1380 STONEWALL
 NEW BRAUNFELS
 TEXAS 78130
 PH (281) 711-4103
 FAX (830) 621-9169

Sheet #
 of
 6